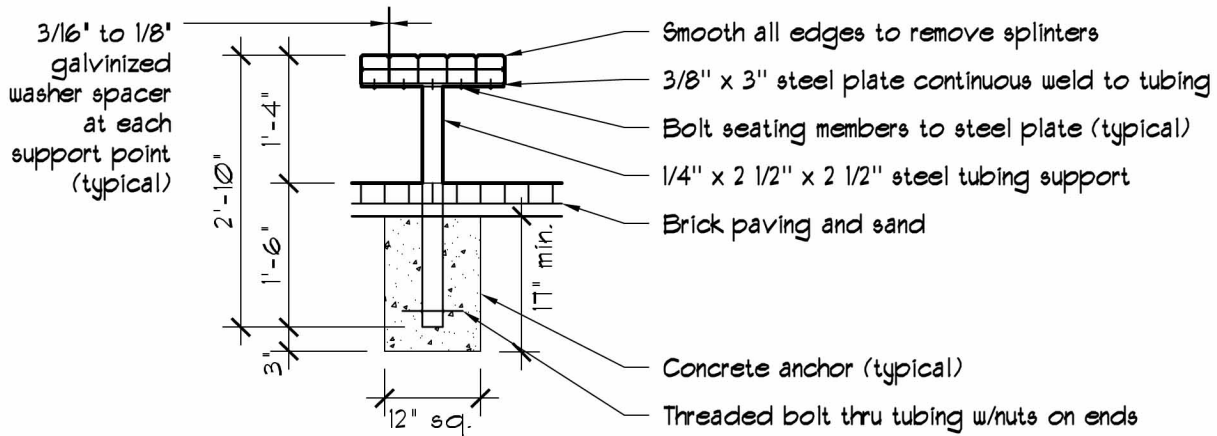


PLAN - STANDARD WOOD BENCH DETAIL

1/2" = 1'-0"



SECTION - STANDARD WOOD BENCH DETAIL

1/2" = 1'-0"

- 1 Contact campus landscape architect in facilities planning and design for approval of bench location.
- 2 Contractor shall be responsible for the acceptable closure and repair of all areas disturbed during construction. Repair work shall utilize like materials where possible, or materials compatible to existing and shall restore disturbed surface to original condition.
- 3 Contractor responsible for locating utilities before digging foundations for posts. Adjust location as necessary to avoid utilities.
- 4 Maximum spacing between supports (posts) is 4 feet.
- 5 All fasteners to be galvanized.
- 6 All steel members to be painted with industrial enamel with 2 coats of architectural brown by Glidden or approved equivalent.
- 7 All exposed wood surfaces to be sanded smooth. Chamfer all edges to remove splinters.
- 8 Wood type is redwood or equivalent. Do not use treated southern yellow pine.