

FACULTY/STAFF ADVISOR
& ACADEMIC ADVISOR
TRAINING

August 3, 2009

Agenda



- Lunch – please help yourself as you come in
- Fraternity and Sorority Community at NC State
- Academic Trends
- Role of the Faculty/Staff Advisor
- Manual Highlights
- Best Practices
- Being Matched with a Chapter
- Questions?

Thank You for Volunteering!



- Lunch today was donated by Moe's
- Help yourself and encourage others to as they trickle in
- If you need to leave before the end, no problem

The Department of Greek Life



Our Vision: the NC State Fraternity and Sorority Community will be the premier Greek Community in the nation, reflecting the pillars of Brotherhood, Scholarship, Service, Leadership, and Sisterhood.

Department of Greek Life – Mission



The Department of Greek Life recognizes those organizations committed to the Pillars of Greek Life. The Department seeks to foster the premier Fraternity and Sorority Community by challenging the Greek Community membership to live up to those highest principles and ideals upon which their respective organizations were founded:

- ❑ Promote intellectual development and student learning
- ❑ Contribute through service and philanthropy
- ❑ Create a healthy and safe community environment
- ❑ Engage in campus life and leadership
- ❑ Provide a quality involvement opportunity for student
- ❑ Instill organization values with positive and productive conduct
- ❑ Cultivate leadership skills and abilities
- ❑ Have integrity

Department of Greek Life – Mission



The Department of Greek Life will support the Greek community membership in meeting these challenges by:

- ❑ Providing accountability and opportunities for distinction
- ❑ Dedicating professional and para-professional advisors
- ❑ Establishing parameters for appropriate activities and behaviors
- ❑ Offering safe attractive chapter facilities
- ❑ Fostering a diverse and inclusive community
- ❑ Presenting council and chapter leadership training
- ❑ Working in partnership with inter/national fraternity and sorority leadership and local advisors
- ❑ Having integrity

Today's Fraternity and Sorority



10 Shared Principles

1. Alumni/Graduate Chapter Relations
2. Campus Leadership and Involvement
3. Council Involvement
4. Educational Programming
5. Financial Management
6. Leadership Training
7. Membership Development
8. Risk Management
9. Scholarship/Academics
10. Service/Philanthropy

Community Profile

47 Chapters in good standing

(16 women's and 31 men's organizations)

- 11 Collaborative Greek Council (144 members, ACS = 12)
 - +1 ΣΛΒ Latino fraternity interest group
- 23 IFC (893 members, ACS= 39)
 - +1 ΚΑ restart Fall 2009
 - ΖΨ suspended
- 5 NPHC (80 members, ACS = 13)
 - +1 ΣΓΡ restart Fall 2009
 - ΩΨΦ and ΖΦΒ suspended
- 8 Panhellenic Association (920 members, ACS = 115)
 - +1 ΚΔ approved for Fall 2010

Academic Trends

NC State Fraternities and Sororities Grade Report Spring 2009

Chapter	Council	Chapter GPA	Total Member	Initiate GPA	Total Initiates	New Member GPA	Total NM
Sigma Alpha Mu	IFC	3.32943	6	*	1	3.45603	5
Delta Gamma	PA	3.23395	115	3.23395	115		0
Zeta Tau Alpha	PA	3.18584	131	3.18584	131		0
Delta Upsilon	IFC	3.18285	22	3.20857	19	3.05177	3
Alpha Pi Omega	CGC	3.17697	2	3.17697	2		0
Alpha Kappa Alpha	NPHC	3.17625	19	3.17625	19		0
Lambda Pi Chi	CGC	3.17384	5	3.17384	5		0
Alpha Delta Pi	PA	3.16322	118	3.16343	117	*	1
Panhellenic Association Average (ACS=115)		3.13871	920	3.13779	909	3.15699	11
Delta Delta Delta	PA	3.12292	109	3.09899	102	3.49779	7
Sigma Kappa	PA	3.11439	122	3.11439	122		0
Delta Zeta	PA	3.11427	122	3.11427	122		0
All Sorority Average		3.11367	1041	3.11575	1014	3.01635	27
Chi Omega	PA	3.09081	88	3.11421	85	2.42659	3
Pi Beta Phi	PA	3.06482	115	3.06482	115		0
All Women's Average		3.06168	9225				
Theta Tau	IFC	3.05442	18	3.21148	13	2.75865	5
Delta Sigma Iota	CGC	3.03647	17	3.02735	15	3.08100	2
Alpha Omega Epsilon	CGC	3.02788	63	2.99022	51	3.17405	12
Phi Gamma Delta	IFC	3.01436	13	3.13183	10	2.65927	3
Iota Nu Delta	CGC	2.97564	9	3.01279	7	2.86781	2
Phi Beta Sigma	NPHC	2.95239	9	2.97537	6	2.90700	3
All Student Average		2.94460	21045				
All Greek Average		2.94115	2121	2.96777	1926	2.64893	195
Sigma Phi Epsilon	IFC	2.93542	47	3.01642	32	2.76007	15
Phi Delta Theta	IFC	2.92195	52	2.96512	40	2.79175	12
Alpha Tau Omega	IFC	2.88867	54	2.87173	48	3.02166	6
Delta Sigma Phi	IFC	2.88709	78	2.88246	69	2.92525	9
Delta Sigma Theta	NPHC	2.88614	9	2.88614	9		0
Pi Lambda Phi	IFC	2.87007	19	2.87007	19		0
Pi Kappa Alpha	IFC	2.86482	70	2.92172	63	2.38262	7

Academic Trends

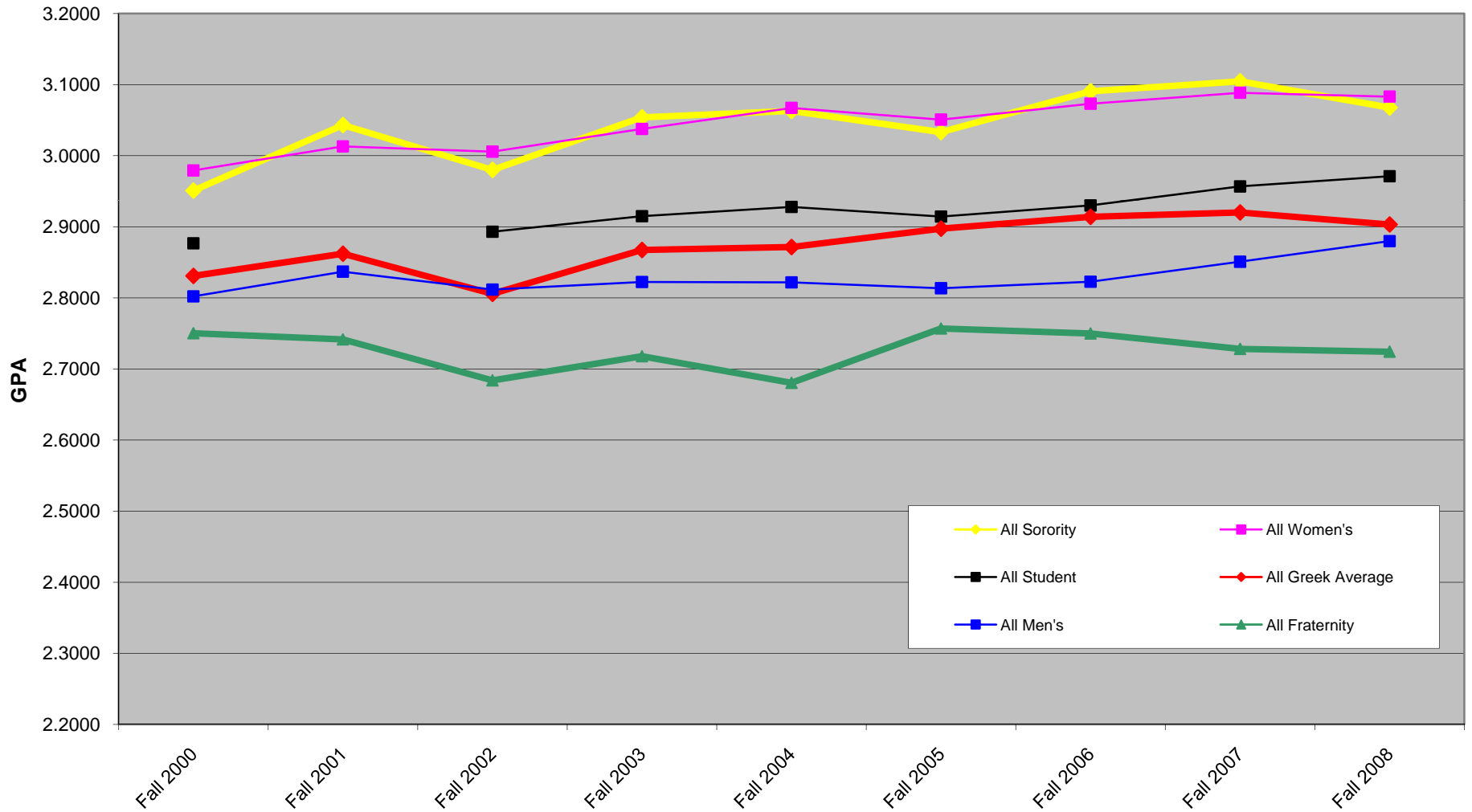
All Men's Average		2.85083	11820				
Sigma Nu	IFC	2.84431	55	2.92896	44	2.48175	11
Collaborative Greek Council Average (ACS=12)		2.84254	144	2.86765	110	2.81639	34
Theta Chi	IFC	2.84030	35	2.85593	32	2.66680	3
Sigma Lambda Beta	CGC	2.83821	7	2.83821	7		0
Pi Kappa Phi	IFC	2.83687	64	2.92225	56	2.27750	8
Interfraternity Council Average (ACS=39)		2.82451	893	2.85086	759	2.63039	134
Kappa Sigma	IFC	2.78309	56	2.77234	53	2.96128	3
All Fraternity Average		2.76741	1080	2.79551	912	2.58649	168
Alpha Gamma Rho	IFC	2.76349	13	2.82553	11	2.42976	2
Alpha Sigma Phi	IFC	2.74265	48	2.76853	38	2.64882	10
Chi Psi	IFC	2.72606	20	2.83809	16	2.30035	4
Theta Nu Xi	CGC	2.71083	5	2.71083	5		0
National Pan-Hellenic Council Average (ACS=13)		2.70007	80	2.74865	65	2.45378	15
Sigma Alpha Epsilon	IFC	2.68977	65	2.68977	65		0
Sigma Chi	IFC	2.68477	65	2.84811	54	1.85676	10
Farm House	IFC	2.6494	32	2.65826	26	2.61267	6
Phi Sigma Nu	CGC	2.63032	7	2.64903	3	2.61903	4
Kappa Alpha Psi	NPHC	2.58544	18	2.43494	11	2.82318	7
Epsilon Chi Nu	CGC	2.51709	7	2.76235	4	2.18424	3
Sigma Omicron Epsilon	CGC	2.49032	5	2.51400	2	2.47741	3
Alpha Phi Alpha	NPHC	2.43214	16	2.43214	16		0
Zeta Psi		2.42390	44	2.42390	44		0
Sigma Pi	IFC	2.42331	58	2.41463	54	2.55104	4
Phi Kappa Tau	IFC	2.33612	27	2.38302	21	2.16871	6
Tau Kappa Epsilon	IFC	2.10092	17	2.34234	14	1.06786	3
Delta Lambda Phi	CGC	2.06247	4	2.06247	4		0
CERES	CGC	2.04480	13	2.12985	12	*	1
Omega Psi Phi	NPHC	1.75876	9	2.15315	4	1.29266	5

Sororities = 11.28% of undergraduate women = 34.77% on Dean's List = 3.17% on AW, PROB or SUSP	Fraternities = 9.14% of undergraduate men = 18.98% on Dean's List = 7.13% on AW, PROB, or SUSP	Greeks = 10.08% of undergraduate students = 26.73% on Dean's List = 5.19% on AW, PROB, or SUSP	All Student = 100% = 28.87% = 7.05%
--	--	--	---

* Greek Life does not report the GPA of an individual student. Figures are based upon chapter-submitted rosters.

Academic Trends

Grade Report of All Greek Averages as Compared to All Student Averages



Academic Trends



□ **Scholarship (performance):**

- 55% of fraternity men and sorority women had a GPA above the all student average for spring semester
 - 69% of sororities above all women's average spring
 - 38% of fraternities above the all men's average spring
 - only 31% of organizations above for both semesters
- 63.6% of chapters took members that met academic minimums (2.5)
- only 44.2% of new member classes hit the target 2.75

Academic Trends



□ **Scholarship (support):**

- 93.3% of chapters have a scholarship chair
 - Training for chairs is 10-11 a.m. August 17th
- 80% have a written academic plan
- 75% have an academic advisor
- 52% have a faculty advisor

Role of the Faculty/Staff Advisor



- every chapter will have differing expectations, needs and wants
- make sure you negotiate to develop a role that works for BOTH you and the chapter
- Manual gives lots of ideas, but realize the most critical thing we are hoping for is academic support

Role of the Faculty/Staff Advisor

- Should probably:
 - ▣ Receive a copy of the chapter grade report by June 1st and January 15th annually. If you have not received a copy, please call 513.2910 to request.
 - ▣ Attend faculty advisor meetings hosted by and communicate frequently with the Department of Greek Life.
 - ▣ Assist the chapter in developing an overall scholarship program or enhancing the program already in place.
 - ▣ Attend chapter meetings each semester to emphasize academics and your availability as a mentor, especially for struggling members.
 - ▣ Review the scholastic achievement of the chapter and determine whether it meet the national and universities expectations.
 - ▣ Meet at minimum twice a semester with the scholarship chair or president to talk about scholarship related issues.
 - ▣ Meet with the new members each semester to review their academic progress and plans at the University.
 - ▣ Help the chapter formulate academic incentives and recognition to reward members who do well academically

Role of the Faculty/Staff Advisor



- Might be asked to/want to:
 - ▣ Meet with individual members who need guidance in regards to their academics. (time commitment will vary with size of chapter)
 - ▣ Advise chapter and/or officers on university issues.
 - ▣ Provide advice and guidance to chapter officers interested in involving faculty in programs, or ways of changing the faculty's perception of them as a student organization.
 - ▣ Provide guidance to the chapter if they want to develop a speaker series or host a faculty reception or dinner
 - ▣ Attend executive board meetings if invited.

Role of the Faculty/Staff Advisor



- Are unlikely to be asked to, but possibly:
 - ▣ Provide general guidance to the chapter.
 - ▣ Maintain contact with the inter/national organization headquarters.

Manual Highlights



- ❑ To help you understand your role as a faculty advisor.
- ❑ To understand of the Department of Greek Life at North Carolina State University and the policies the department uses.
- ❑ To understand the North Carolina State University Greek community.
- ❑ To gain valuable resources for your role as faculty advisor and mentor.

Manual Highlights



- Standards Program
- Tips, Strategies, and Ideas
- Advisor Development Institute
- Sample Worksheets and Contracts
- Campus Resources

Best Practices



- For the returners in the audience...please share some words of wisdom, tips for success, best practices, etc.

Being Matched with a Chapter



- please fill out the interest form indicating preferences
- we will do our best to pair you with a group that meets your preferences, but please keep an open mind. =)

Questions?

