

## What's New in Course Genie 2.1

## What's New in Course Genie 2.1

<b>1. Internationalisation/Localisation</b> .....	<b>3</b>
<b>2. WebCT QTI Assessment Export</b> .....	<b>3</b>
<b>3. moodle/SCORM</b> .....	<b>4</b>
<i>moodle SCORM v1.2 package</i> .....	4
<i>moodle SCORM 2004 package</i> .....	4
<b>4. Installation/Upgrading</b> .....	<b>4</b>
<i>Previous versions</i> .....	4
<i>Warning!</i> .....	4
<b>5. Digital Certificate</b> .....	<b>5</b>
<i>New Digital Certificate</i> .....	5
<b>6. Adobe Acrobat Professional and Microsoft Outlook</b> .....	<b>5</b>
<i>Adobe Acrobat Professional</i> .....	5
<i>Microsoft Outlook</i> .....	5
<b>7. Windows 98/ME</b> .....	<b>6</b>

## 1. Internationalisation/Localization

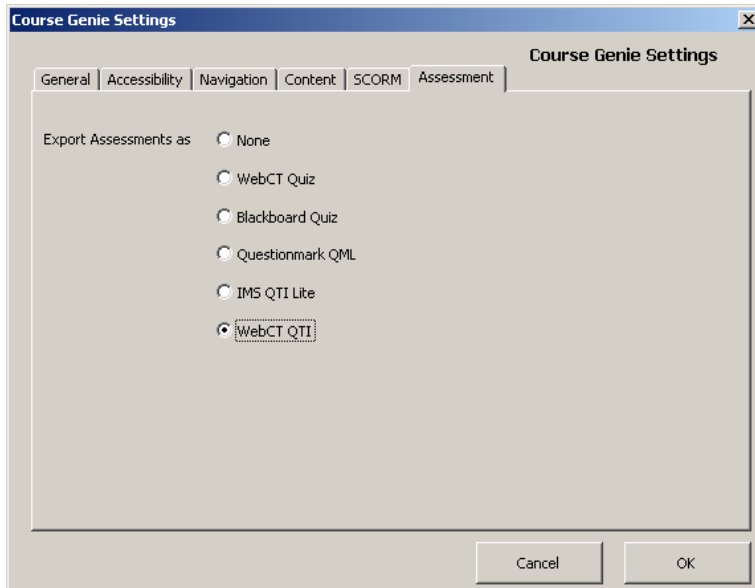
A major focus for this release was internationalisation. It is now possible to create a fully localised version of Course Genie for any language where the text direction is Left-to-Right. Support for languages where the text direction is Right-to-Left is limited to the generated content; we will be adding support for Right-to-Left languages in the user interface in a future release.

When Course Genie loads it will detect the user interface language in use in Word, if a matching Course Genie language pack is found Course Genie will use the same language.

For more details please see the 'Customisation and Localization' manual.

## 2. WebCT QTI Assessment Export

Assessment export is controlled by setting the export format on the Assessment tab of the Settings dialog. There is a new assessment export option for WebCT QTI quizzes for use with WebCT Vista and Campus Edition 6.



Please see the 'WebCT QTI export' section of the Reference manual for more details.

### 3. moodle/SCORM

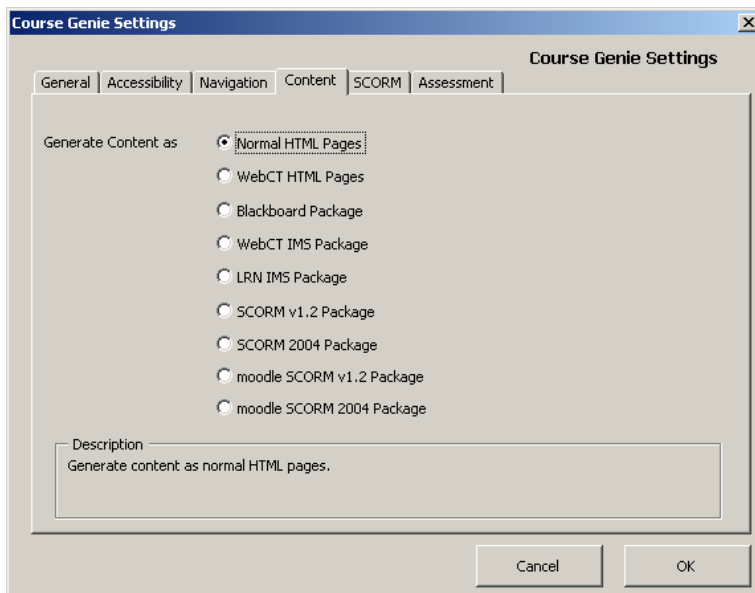
Two new Scorm options are now available. Also a new description box which contains a brief description for the content type selected has been added to the Content tab.

#### moodle SCORM v1.2 package

This mode generates a SCORM v1.2 package. The package settings are appropriate for moodle v1.4 or earlier. The SCO mode is set to Single SCO, see Setting SCORM options topic in the Reference manual for further details. The resulting zip file will have a suffix of \_SCORM.

#### moodle SCORM 2004 package

This mode generates a SCORM 2004 package. The package settings are appropriate for moodle v1.5 or later. The SCO mode is set to Multiple SCOs, see Setting SCORM options topic in the Reference manual for further details. The resulting zip file will have a suffix of \_SCORM2004.



### 4. Installation/Upgrading

#### Previous versions

Please uninstall any previous 'Single Edition' or 'Trial' versions of Course Genie prior to v2.0 before installing this version. You can uninstall Course Genie using the 'Add/Remove Programs' utility in the 'Control Panel'.

The installer will automatically uninstall previous 'Campus Edition' and any v2.0 versions of Course Genie during installation.

#### Warning!

As with previous updates, the Design Schemes and CSS stylesheets have been extended and updated to support this release. If you are making use of stylesheets that you have customised, you will need to start with one of the new standard stylesheets and customise it in a similar way. If you overwrite one of the new stylesheets with one from a previous Course Genie version, you will get unpredictable results.

Please see the 'Customization and Localisation' manual for more details.

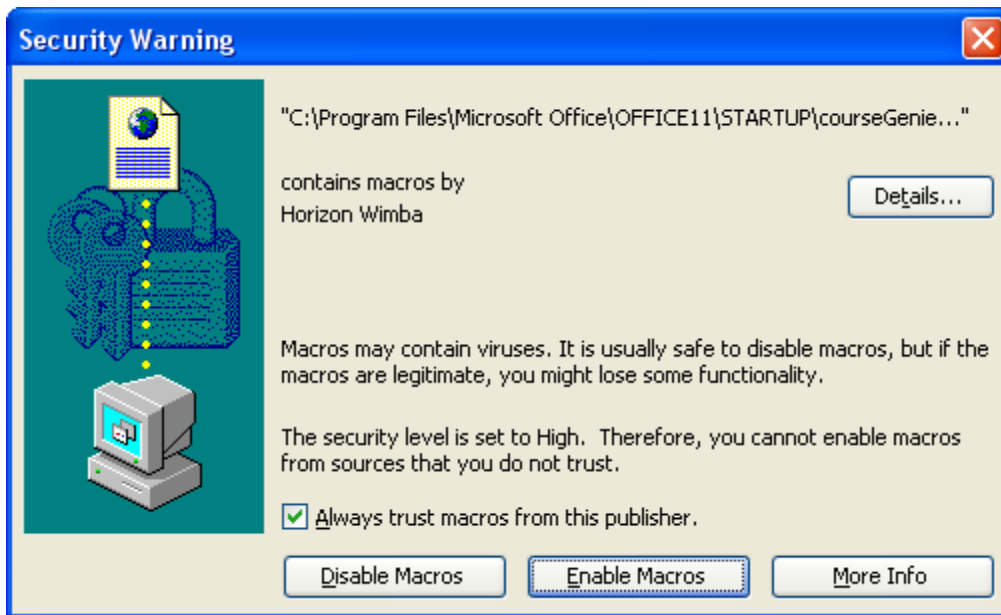
## 5. Digital Certificate

### New Digital Certificate

We have added a new digital certificate in response to feedback from customers reporting some issues with the previous certificate when installed in Windows 2000.

The digital certificate allows Course Genie to run with macro security level settings in Word set to 'High'.

When a user runs Word after Course Genie installation they will be presented with a dialog similar to the one below.



They will need to tick 'Always trust macros from this publisher' then click the 'Enable Macros' button.

The public certificate files have been included with the Course Genie installation. This should allow system administrators to deploy our certificate as a trusted publisher and prevent users from seeing the Security Warning dialog.

## 6. Adobe Acrobat Professional and Microsoft Outlook

### Adobe Acrobat Professional

With this release we have overcome the conflict with Acrobat Professional which caused the Course Genie menu to disappear or be replaced with an Acrobat menu. This applies to Acrobat Professional v7.x. Course Genie will continue to disable the Acrobat Professional v6.x macro when loaded, please see the 'Installation' manual for details.

### Microsoft Outlook

With this release we have overcome an issue where having Microsoft Outlook loaded before Word prevented Course Genie from being started.

## **7. AutoCorrect/AutoFormat**

Course Genie will disable all of Word's AutoCorrect and AutoFormat features during the generation of a course, the users settings will be restored when the generation is complete. This is to prevent these features interfering with the generation process.

This mainly affects users running Course Genie in a non-English version of Word.

## **8. Windows 98/ME**

With Microsoft ending support for Windows 98 we are no longer able to offer support for this platform with Course Genie.