

What's New in Course Genie 2.2.0

What's New in Course Genie 2.2.0

1. Overview	3
2. Bug Fixes	3
<i>Moodle SCORM fixes</i>	<i>3</i>
<i>SCORM Mastery Score issue.....</i>	<i>3</i>

1. Overview

This release of Course Genie sports the new Wimba branding and contact details.

Also included are fixes for some bugs found in previous versions.

Please see the sections below for further information.

2. Bug Fixes

This release fixes some issues found in previous version of Course Genie.

Moodle SCORM fixes

There were some issues in various version of moodle where moving to the next page would result in error messages being show. This issue has been corrected.

If your moodle installation is running on a PostgreSQL database we recommend that you upgrade to moodle 1.8 or use a MySQL database.

To benefit from this fix you will need to generate you SCORM package with this release of Course Genie and update you course in moodle with the new package.

SCORM Mastery Score issue

There was a problem in the JavaScript for SCORM using the 'Scoring and Tracking' option where the mastery score was set to something other than a number. This issue has been corrected.

To benefit from this fix you will need to generate you SCORM package with this release of Course Genie and update you course in your course management system with the new package.

What's New in Course Genie 2.1.1

What's New in Course Genie 2.1.1

1. Overview	3
2. Office 2007 Support	3
<i>Installing and Macro Security in Word 2007.....</i>	<i>3</i>
<i>Course Genie and the Office 2007 User Interface</i>	<i>4</i>
<i>Starting Course Genie</i>	<i>4</i>
<i>Registration Screen (Single User and Trial Version only).....</i>	<i>5</i>
<i>Course Genie Menus (All Versions).....</i>	<i>6</i>
<i>Course Genie Styles.....</i>	<i>7</i>
3. Windows Vista Support.....	8
<i>Registration Screen (Single User and Trial Version only).....</i>	<i>8</i>
4. Bug Fixes	9
<i>Metadata Table.....</i>	<i>9</i>
<i>SCORM v1.2 JavaScript issue</i>	<i>9</i>
<i>Campus License 'Loc.dat' file not found (Campus Edition Only)</i>	<i>9</i>

1. Overview

This release of Course Genie adds support for Microsoft Windows Vista and Microsoft Office 2007.

Also included are fixes for some bugs found in previous versions.

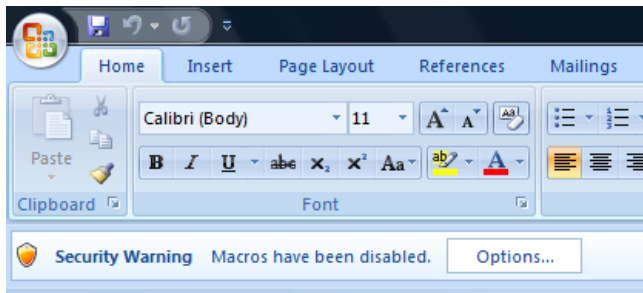
Please see the sections below for further information.

2. Office 2007 Support

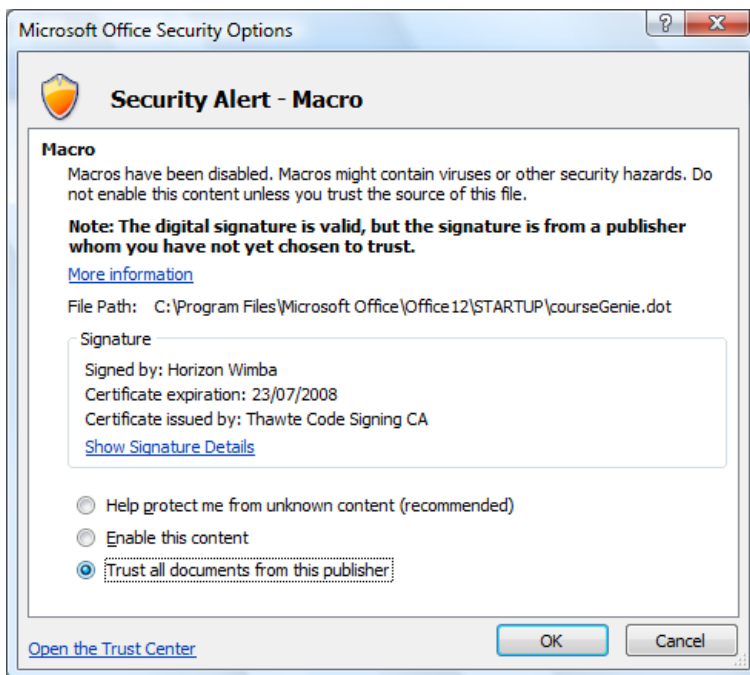
With the User Interface changes and new security mechanism introduced with Office 2007 the way you install and access Course Genie commands and menus have changed slightly.

Installing and Macro Security in Word 2007

When you run Word 2007 for the first time after installing Course Genie you will likely be presented with following 'Security Warning' information bar that tells you the Macros have been disabled.



Click the 'Options' button to show the following screen.



Choose 'Trust all documents from this publisher' option and click the OK button. This will instruct Word to let the Course Genie macro run.

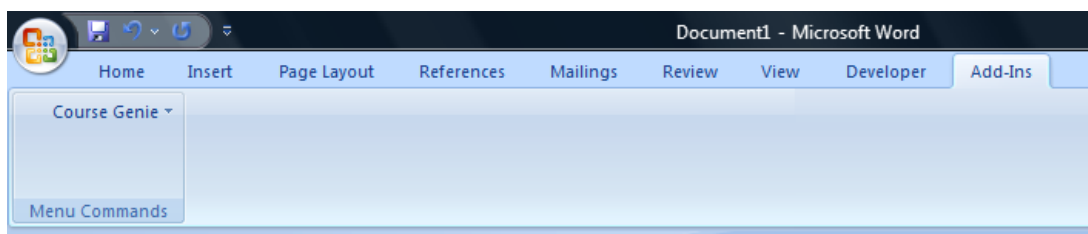
Note: Unless the Course Genie Digital Certificate has been installed and trusted for all users then each subsequent user will have to all the Macro to run in the same way as described above.

Course Genie and the Office 2007 User Interface

Word 2007 introduces a new interface known as the Ribbon which replaces the menus and toolbars found in previous versions.

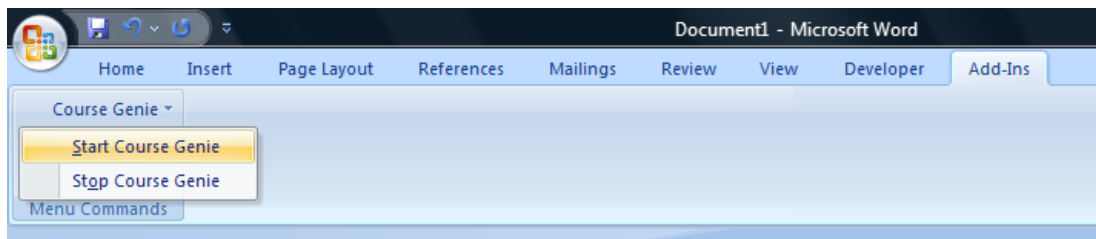
With this new interface all Add-in created menus and toolbars (such as those added by Course Genie) are created in the 'Add-ins' Tab on the Ribbon.

Here you will find the Start/Stop Course Genie commands that would usually be found on the Tools menu in previous versions of Word.



Starting Course Genie

To start Course Genie click on the 'Course Genie' drop-down menu in the 'Add-Ins' tab and select 'Start Course Genie'



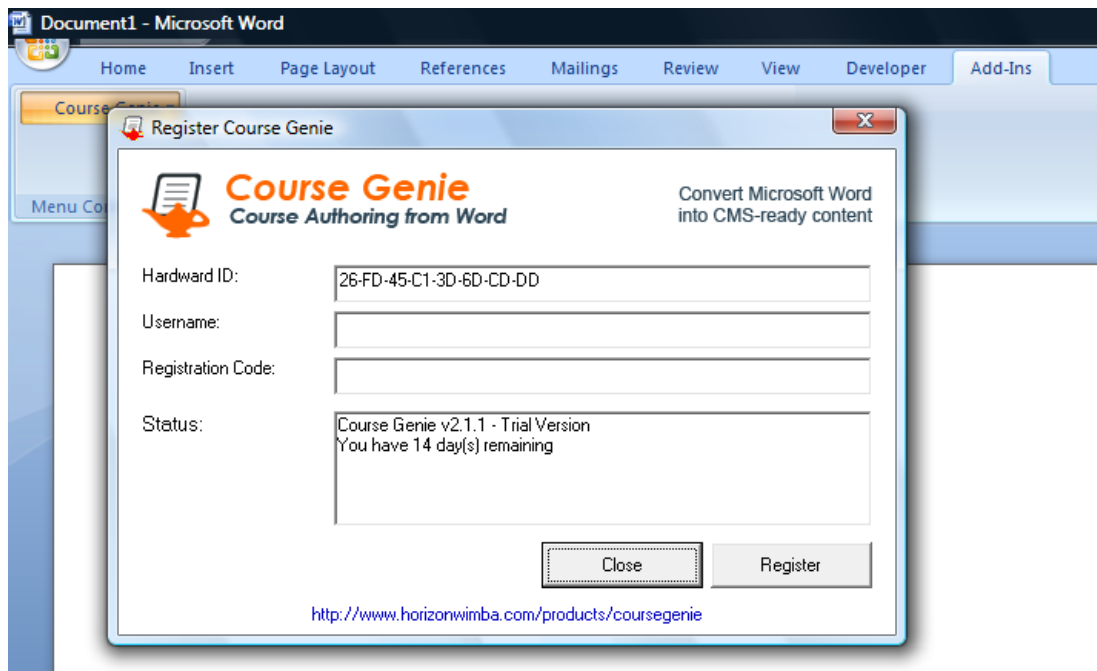
Registration Screen (Single User and Trial Version only)

If you are running the Trial Version you will see the screen shown below which displays the status of the trial such as number of days remaining.

To run Course Genie in Trial mode click the close button to continue.

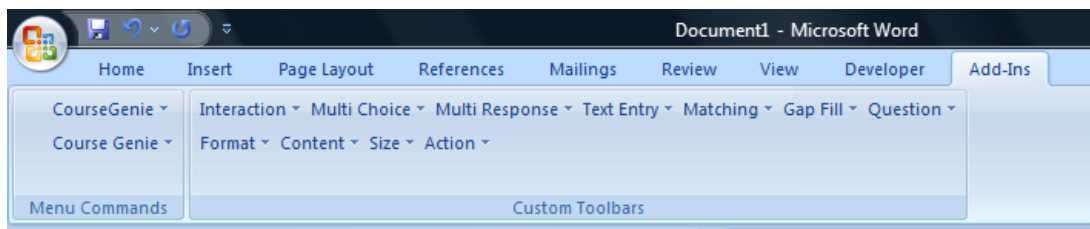
If you have purchased and have registration details enter them here and click the 'Register' button. The status will then be updated to show that you have registered, click the 'Close' button to proceed.

Note: If you are upgrading a previously registered installation of Course Genie this window will not be displayed.

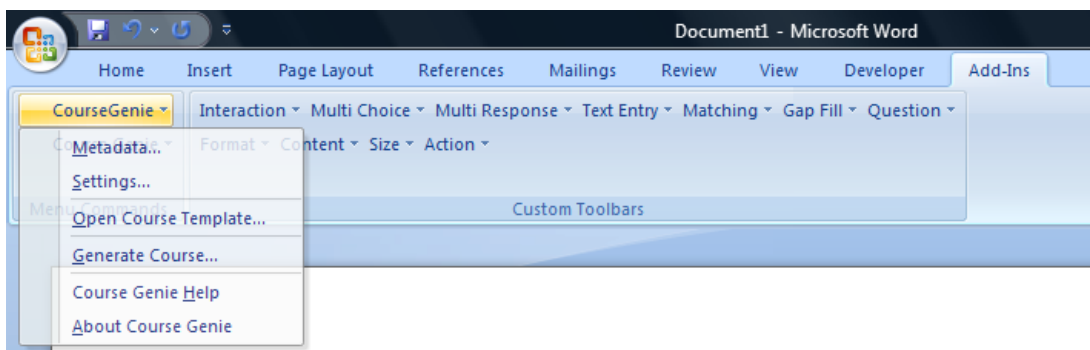


Course Genie Menus (All Versions)

Course Genie will display a 'Welcome' splash-screen; click 'OK' to continue. You will then see the 'CourseGenie' menu and toolbars added to the 'Add-Ins' tab.

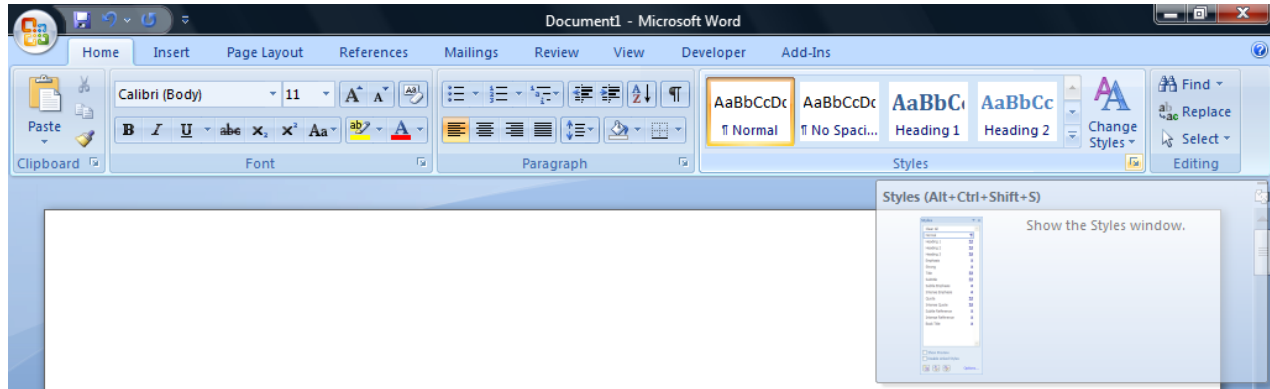


The main Course Genie menu will be added above the menu used to Start and Stop Course Genie.

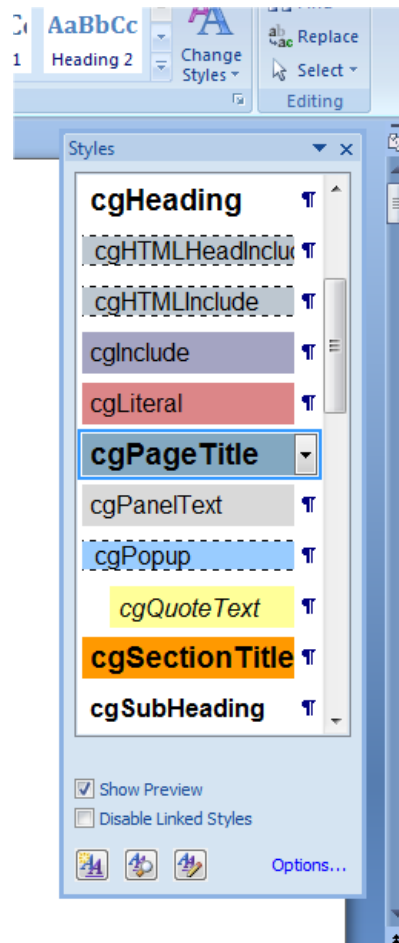
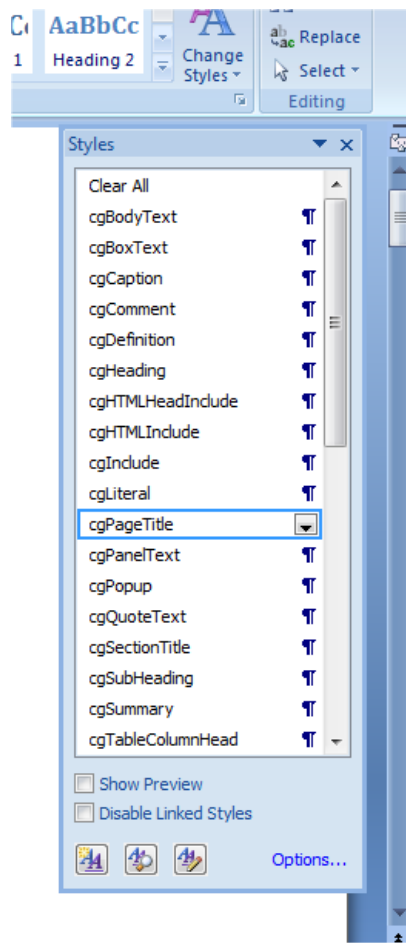


Course Genie Styles

Words styles can be found on the 'Home' tab on the Ribbon by clicking the little arrow icon in the bottom right corner of the styles pane.



This will display the list of styles in a new floating window (which can also be docked at the side of the window). See picture on the left below.



By default the styles are just show by name, you need to click the 'Show Preview' checkbox at the bottom of the styles window to enable to usual style display. See picture on the right above.

3. Windows Vista Support

Course Genie has been updated to work with the Windows Vista operating system.

The Course Genie Installer works with Vista's new UAC (User Access Control) system.

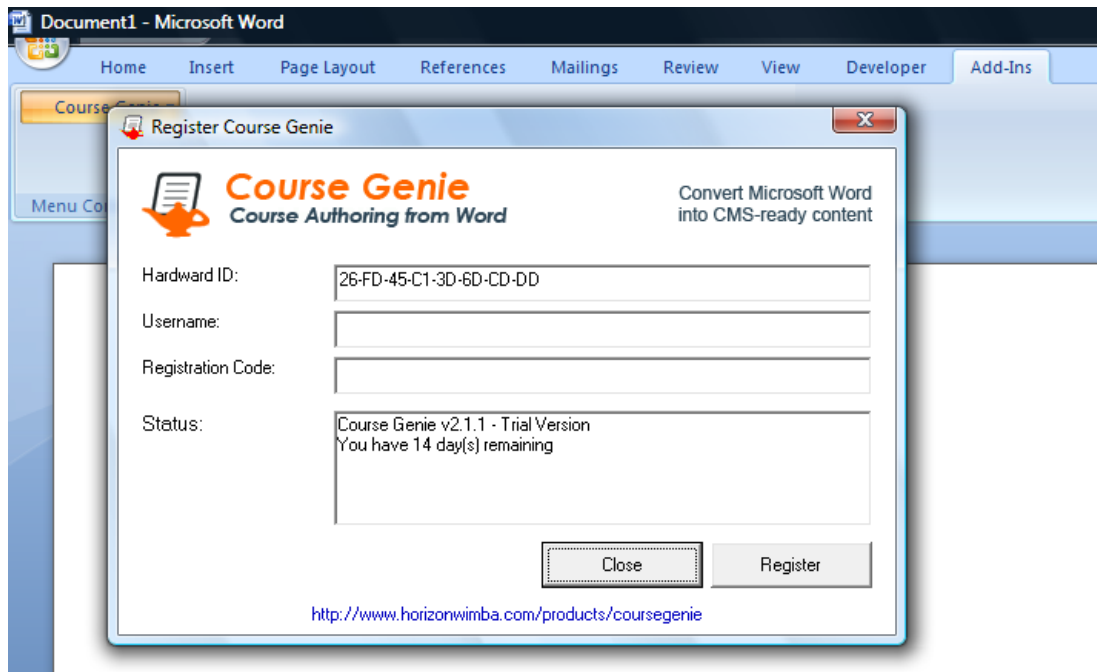
Registration Screen (Single User and Trial Version only)

There has been a small change to the Registration window. If you are running the Trial Version you will see the screen shown below which displays the status of the trial such as number of days remaining.

To run Course Genie in Trial mode click the close button to continue.

If you have purchased and have registration details enter them here and click the 'Register' button. The status will then be updated to show that you have registered, click the 'Close' button to proceed.

Note: If you are upgrading a previously registered installation of Course Genie this window will not be displayed.



4. Bug Fixes

This release fixes some issues found in previous version of Course Genie.

Metadata Table

If the first paragraph of a Word document being used with Course Genie contained a table Course Genie would insert the Metadata table in the first cell of this table. This issue has been corrected.

SCORM v1.2 JavaScript issue

There was a problem in the JavaScript for SCORM v1.2 using the Multi-SCO option where the page status was not update when the page was unloaded. This issue has been corrected.

Campus License 'Loc.dat' file not found (Campus Edition Only)

There was an error in Course Genie v2.1 finding the 'Loc.dat' file which tells Course Genie where to locate the Campus Edition License files. This issue has been corrected.

Internet Explorer 7 CSS Rendering

Updated the CSS file for a rendering issue in Internet Explorer 7. When generating a document with the Table of Contents turned off with two cgDefinition styled blocks of text next to each other IE7 would not render the text on the page.

What's New in Course Genie 2.1

What's New in Course Genie 2.1

1. Internationalisation/Localization	3
2. Installation/Upgrading	3
<i>Previous versions</i>	3
3. Upgrading existing schemes from previous versions	3
<i>Warning!</i>	3
4. Reselecting schemes from Settings	3
5. WebCT QTI Assessment Export	3
6. moodle/SCORM	4
<i>moodle SCORM v1.2 package</i>	4
<i>moodle SCORM 2004 package</i>	4
7. Digital Certificate	5
<i>New Digital Certificate</i>	5
8. Adobe Acrobat Professional and Microsoft Outlook	6
<i>Adobe Acrobat Professional</i>	6
<i>Microsoft Outlook</i>	6
9. AutoCorrect/AutoFormat	6
10. Windows 98/ME	6

1. Internationalisation/Localization

A major focus for this release was internationalisation. It is now possible to create a fully localised version of Course Genie for any language where the text direction is Left-to-Right. Support for languages where the text direction is Right-to-Left is limited to the generated content; we will be adding support for Right-to-Left languages in the user interface in a future release.

When Course Genie loads it will detect the user interface language in use in Word, if a matching Course Genie language pack is found Course Genie will use the same language.

For more details please see the 'Customisation and Localization' manual.

2. Installation/Upgrading

Previous versions

Please uninstall any previous 'Single Edition' or 'Trial' versions of Course Genie prior to v2.0 before installing this version. You can uninstall Course Genie using the 'Add/Remove Programs' utility in the 'Control Panel'.

The installer will automatically uninstall previous 'Campus Edition' and any v2.0 versions of Course Genie during installation.

3. Upgrading existing schemes from previous versions

Warning!

As with previous updates, the Design Schemes and CSS stylesheets have been extended and updated to support this release.

If you have customised a scheme from a previous version of Course Genie it will be necessary to update it for it to work with this release of Course Genie.

Before you install this version of Course Genie make sure that you have created backups of any customizations you have made as these will be required for the upgrading process.

Details regarding how to update a scheme can be found in the 'Upgrading Existing Schemes' section of the 'Customisation and Internationalization' manual which is installed with Course Genie. The manual can be found on the Start menu under Programs/Course Genie/Documentation.

Please email cgsupport@wimba.com if you have any questions or require any assistance.

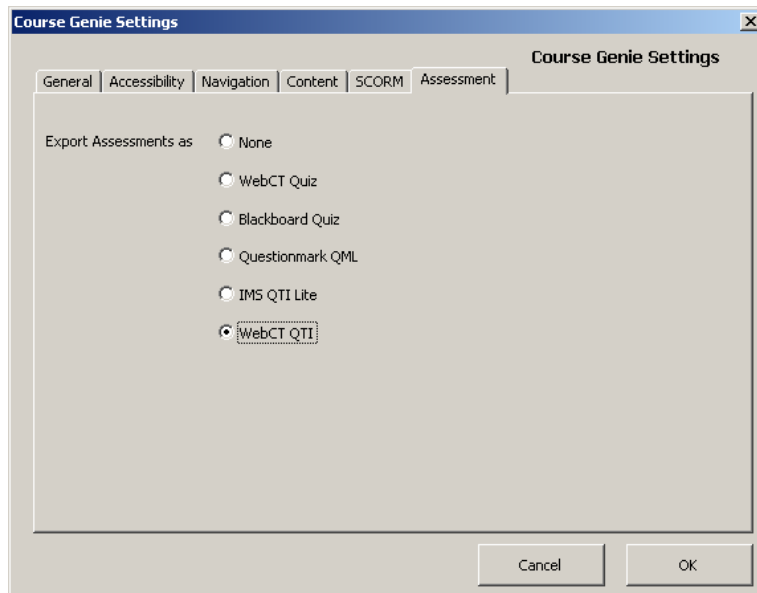
4. Reselecting schemes from Settings

With the changes to the locations of the schemes it may be necessary when generating an existing Course Genie document for the first time with this release to reselect the desired Scheme from the Course Genie Settings.

To do this go to the Settings option on the Course Genie menu and Word and select the desired scheme from the list of schemes on the 'General' tab.

5. WebCT QTI Assessment Export

Assessment export is controlled by setting the export format on the Assessment tab of the Settings dialog. There is a new assessment export option for WebCT QTI quizzes for use with WebCT Vista and Campus Edition 6.



Please see the 'WebCT QTI export' section of the Reference manual for more details.

6. moodle/SCORM

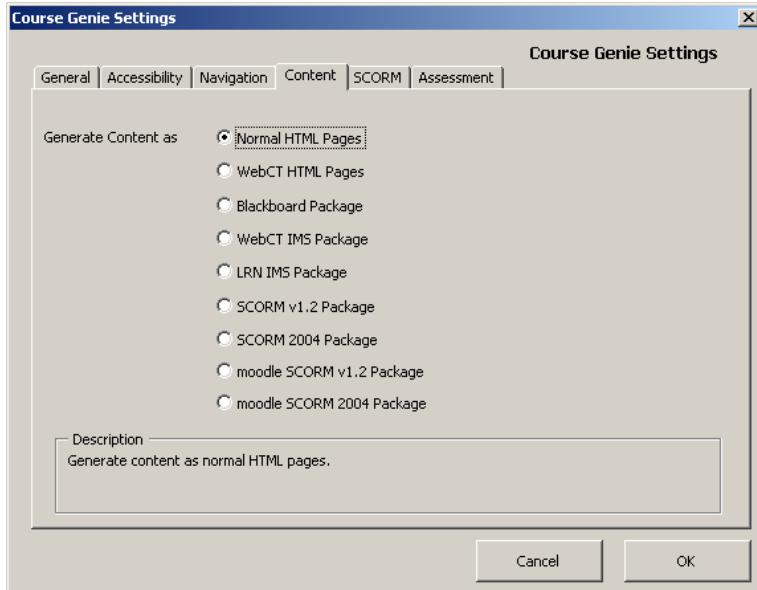
Two new Scorm options are now available. Also a new description box which contains a brief description for the content type selected has been added to the Content tab.

moodle SCORM v1.2 package

This mode generates a SCORM v1.2 package. The package settings are appropriate for moodle v1.4 or earlier. The SCO mode is set to Single SCO, see Setting SCORM options topic in the Reference manual for further details. The resulting zip file will have a suffix of `_SCORM`.

moodle SCORM 2004 package

This mode generates a SCORM 2004 package. The package settings are appropriate for moodle v1.5 or later. The SCO mode is set to Multiple SCOs, see Setting SCORM options topic in the Reference manual for further details. The resulting zip file will have a suffix of `_SCORM2004`.



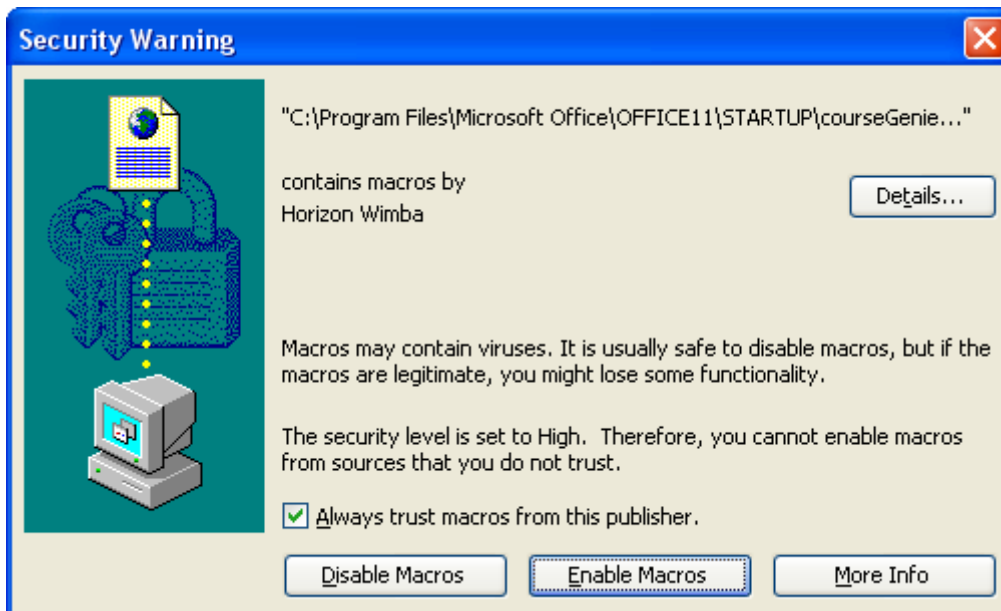
7. Digital Certificate

New Digital Certificate

We have added a new digital certificate in response to feedback from customers reporting some issues with the previous certificate when installed in Windows 2000.

The digital certificate allows Course Genie to run with macro security level settings in Word set to 'High'.

When a user runs Word after Course Genie installation they will be presented with a dialog similar to the one below.



They will need to tick 'Always trust macros from this publisher' then click the 'Enable Macros' button.

The public certificate files have been included with the Course Genie installation. This should allow system administrators to deploy our certificate as a trusted publisher and prevent users from seeing the Security Warning dialog.

8. Adobe Acrobat Professional and Microsoft Outlook

Adobe Acrobat Professional

With this release we have overcome the conflict with Acrobat Professional which caused the Course Genie menu to disappear or be replaced with an Acrobat menu. This applies to Acrobat Professional v7.x. Course Genie will continue to disable the Acrobat Professional v6.x macro when loaded, please see the 'Installation' manual for details.

Microsoft Outlook

With this release we have overcome an issue where having Microsoft Outlook loaded before Word prevented Course Genie from being started.

9. AutoCorrect/AutoFormat

Course Genie will disable all of Word's AutoCorrect and AutoFormat features during the generation of a course, the users settings will be restored when the generation is complete. This is to prevent these features interfering with the generation process.

This mainly affects users running Course Genie in a non-English version of Word.

10. Windows 98/ME

With Microsoft ending support for Windows 98 we are no longer able to offer support for this platform with Course Genie.