



IUCRC PROGRAM FINDINGS FROM THE CENTER STRUCTURE DATABASE

- FINAL RESULTS: FY 2004-2005
- TRENDS FROM CENTER STRUCTURE DATABASE: 1980-2005

*Gray, D.O., Schneider, J.S., Rivers, D.C.
North Carolina State University*

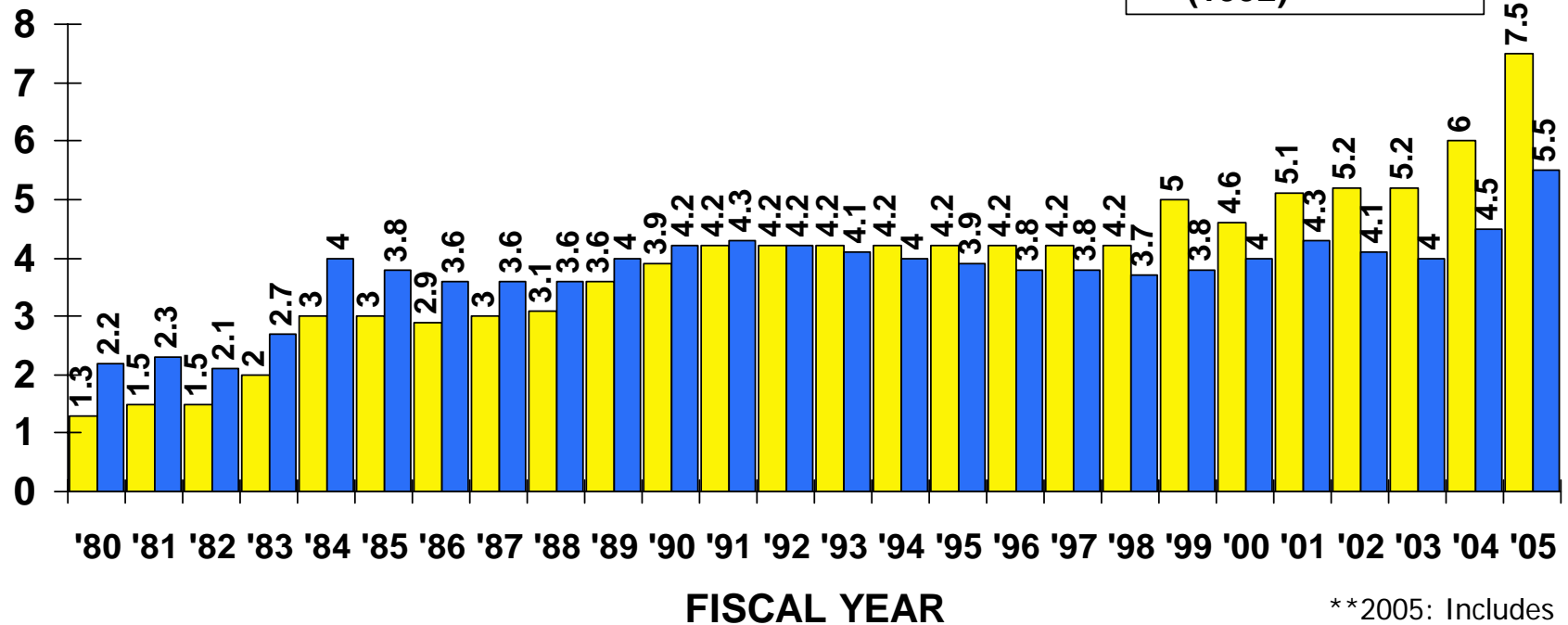
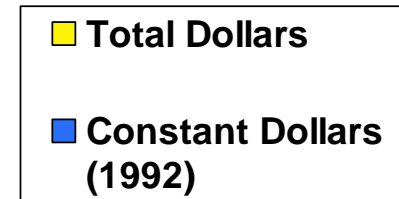


FY 2004-2005 STRUCTURAL INFORMATION

- PRESENTATION
 - BASED ON DRAFT VERSION
- FINAL VERSION
 - FINAL TABLES WILL BE E-MAILED
 - MEMBERSHIP REPORT
- RESPONSE RATE
 - 42 CENTERS IN OPERATION DURING FY 2004-2005
 - 42 OUT OF 42 CENTERS RESPONDED

NSF BUDGET BY YEAR

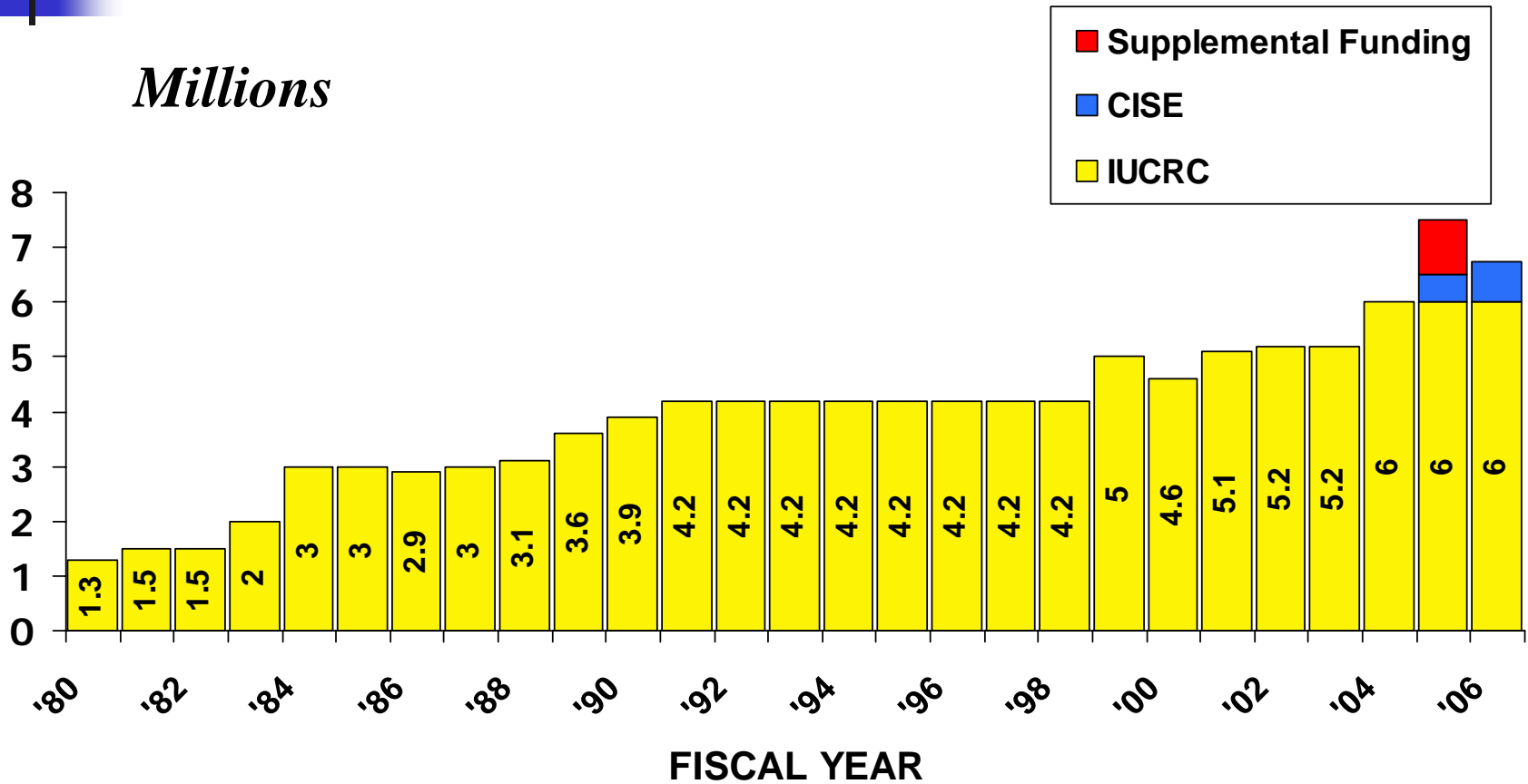
Millions



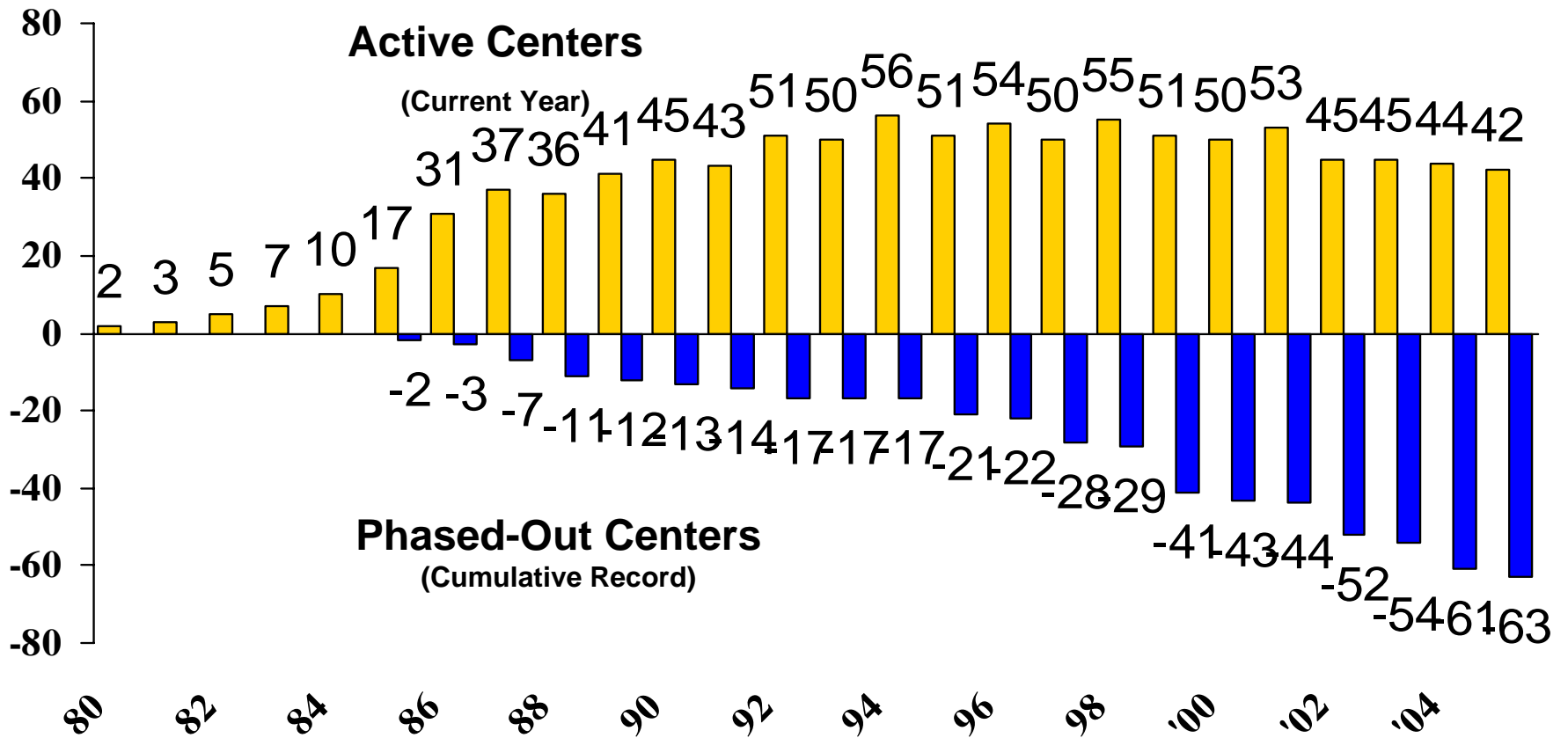
**2005: Includes Supplemental Funding and CISE

NSF BUDGET BY YEAR

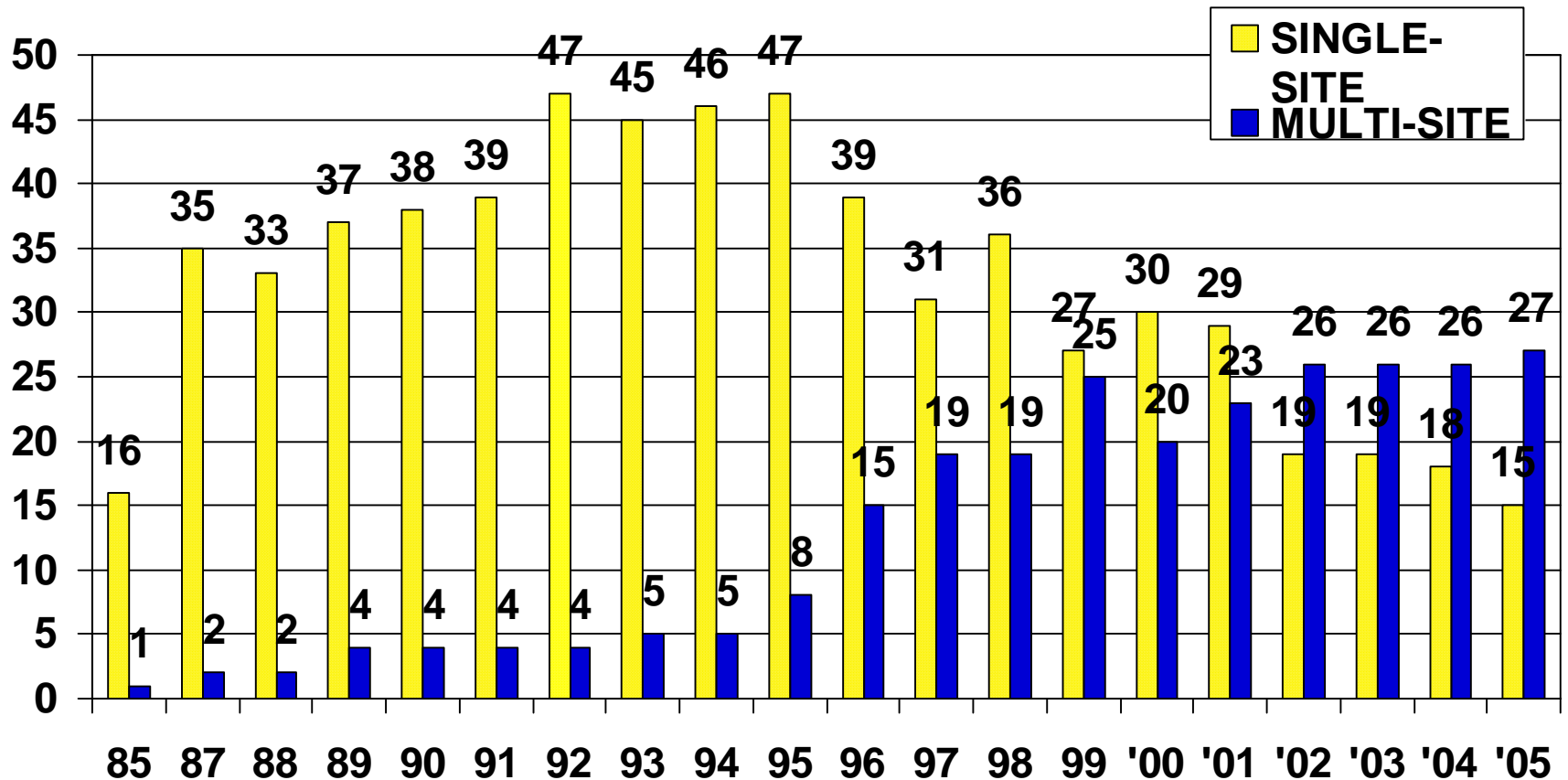
Millions



CENTER LIFE CYCLE

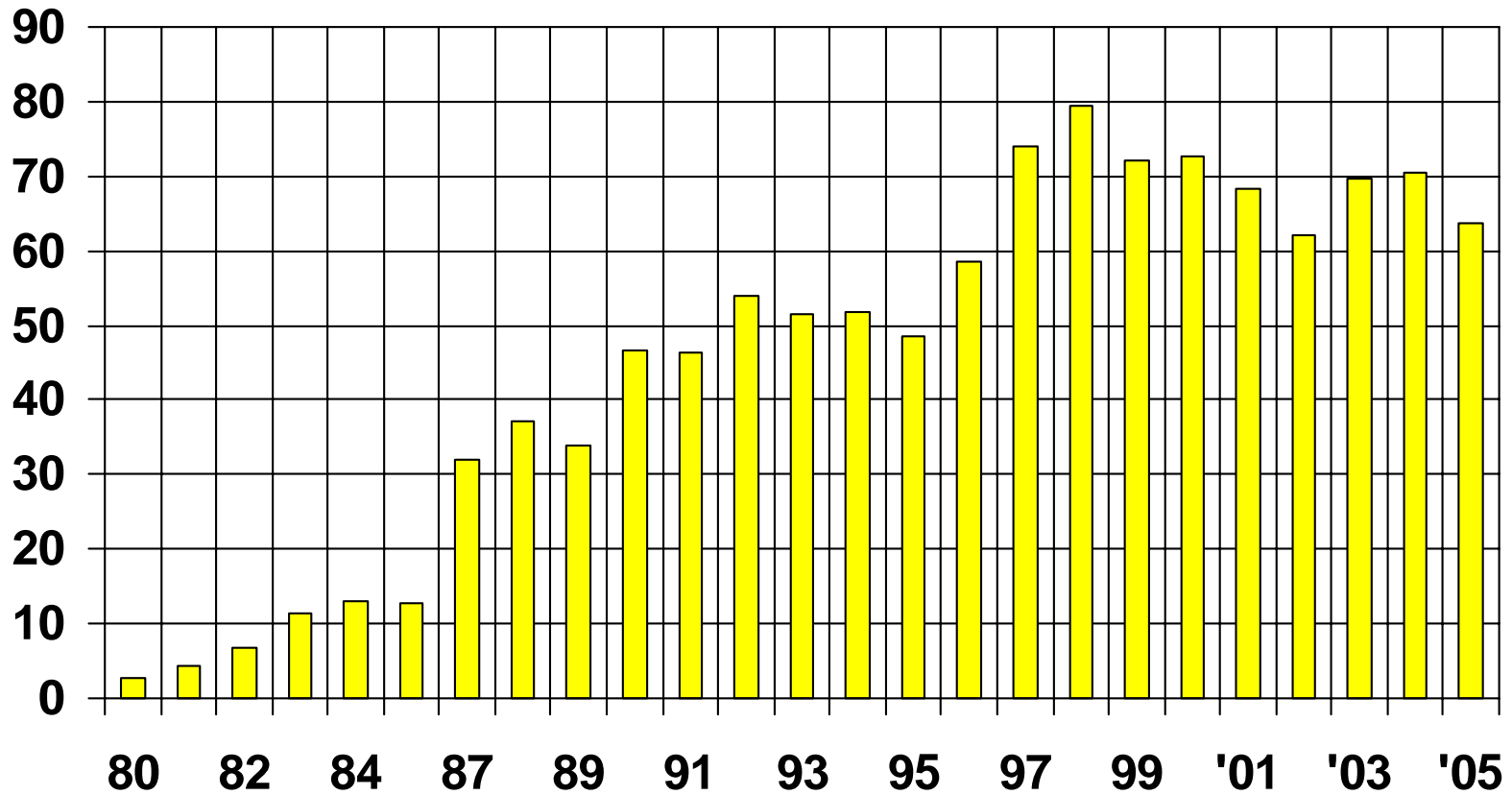


SINGLE AND MULTI-SITE CENTERS BY YEAR

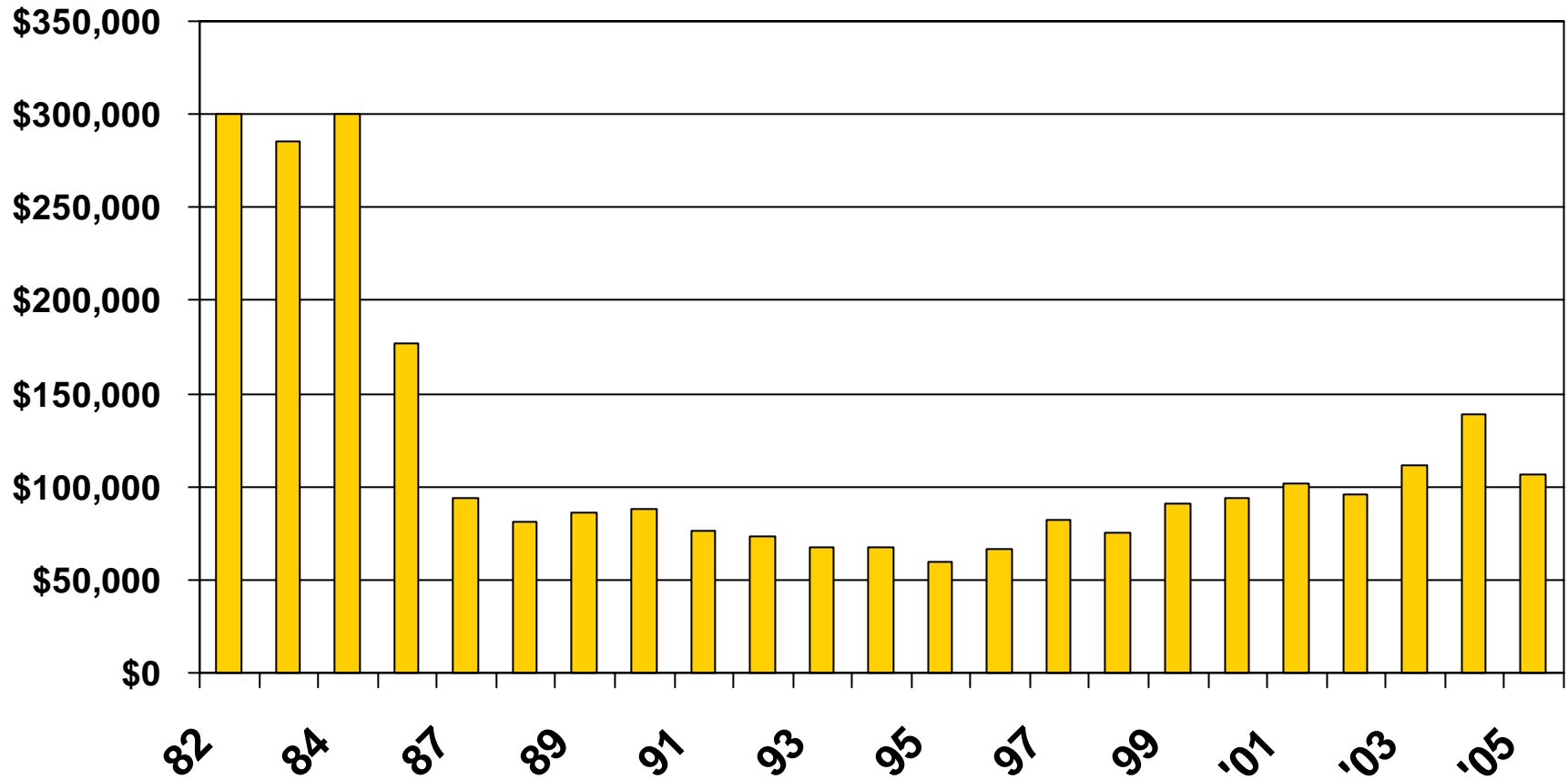


TOTAL PROGRAM FUNDING

Millions

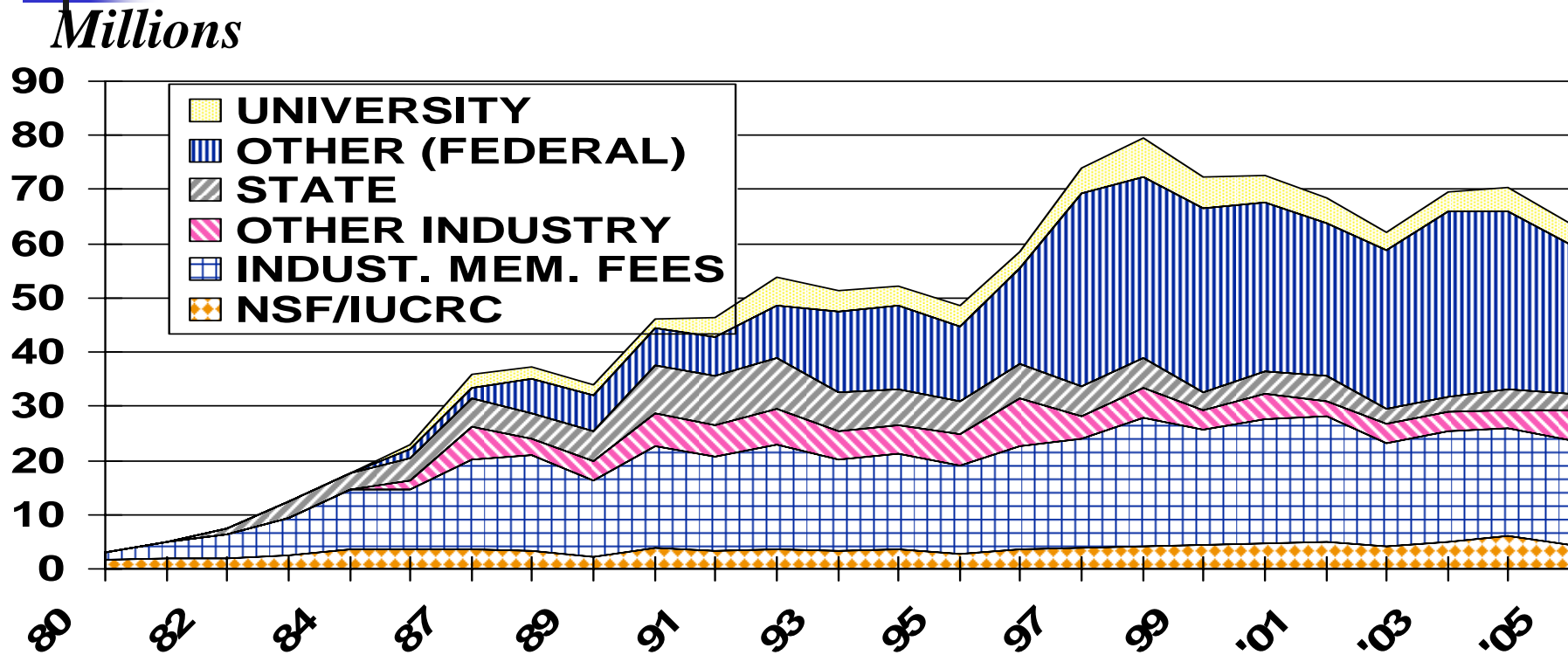


AVERAGE NSF FUNDING PER CENTER TOTAL

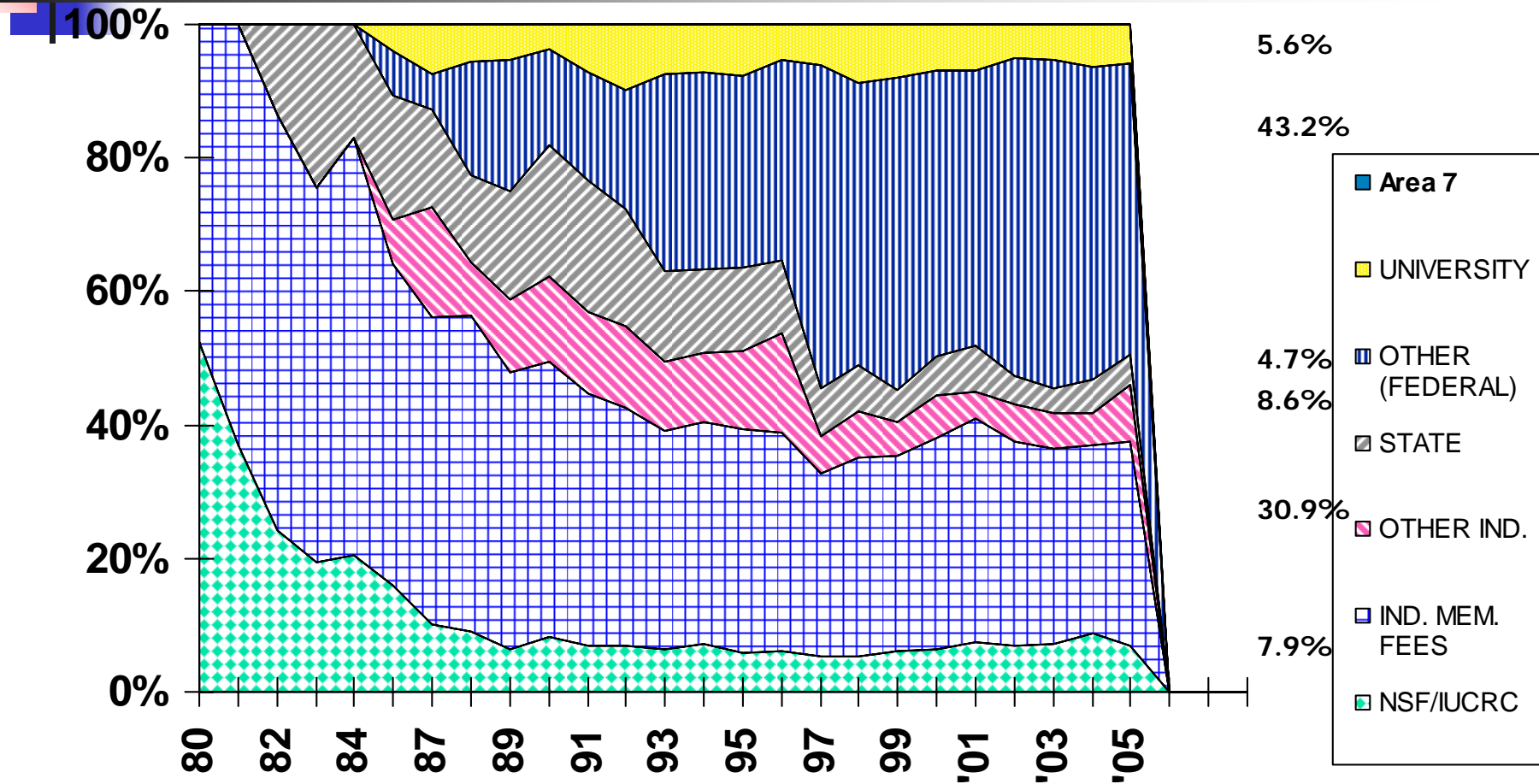


Note: Based on total NSF/IUCRC Budget

TOTAL FUNDING BY SOURCE BY YEAR IN DOLLARS

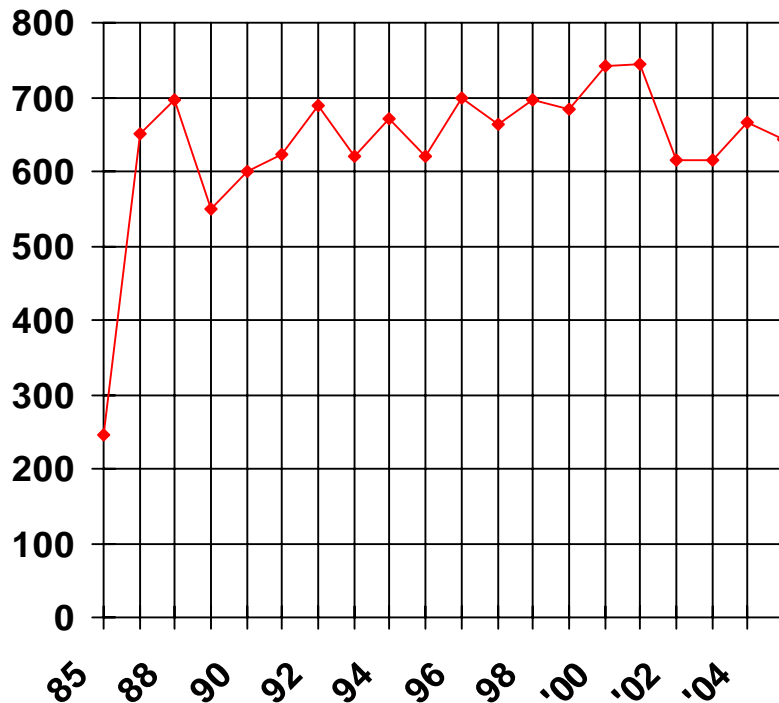


TOTAL FUNDING BY SOURCE BY YEAR IN PERCENTAGES

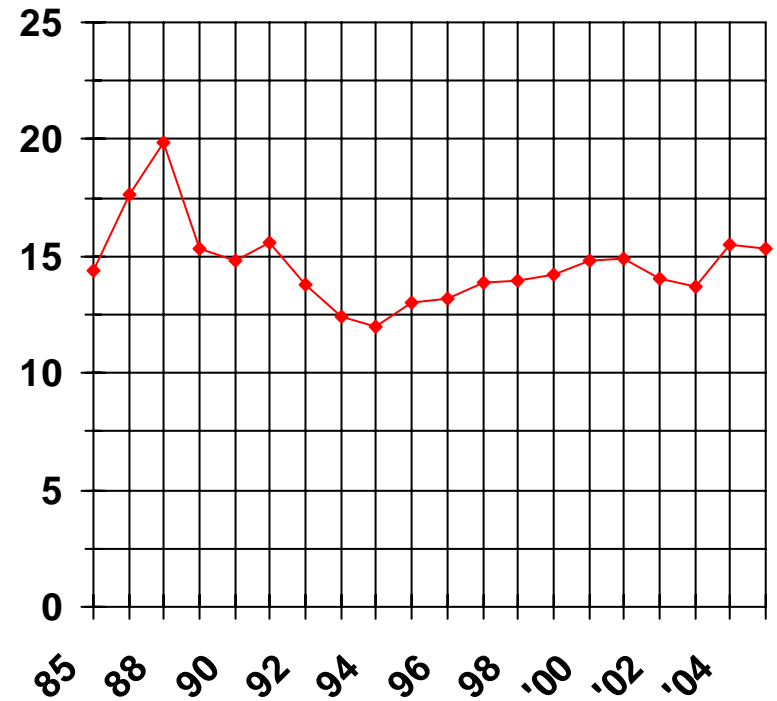


INDUSTRIAL MEMBERSHIPS BY YEAR

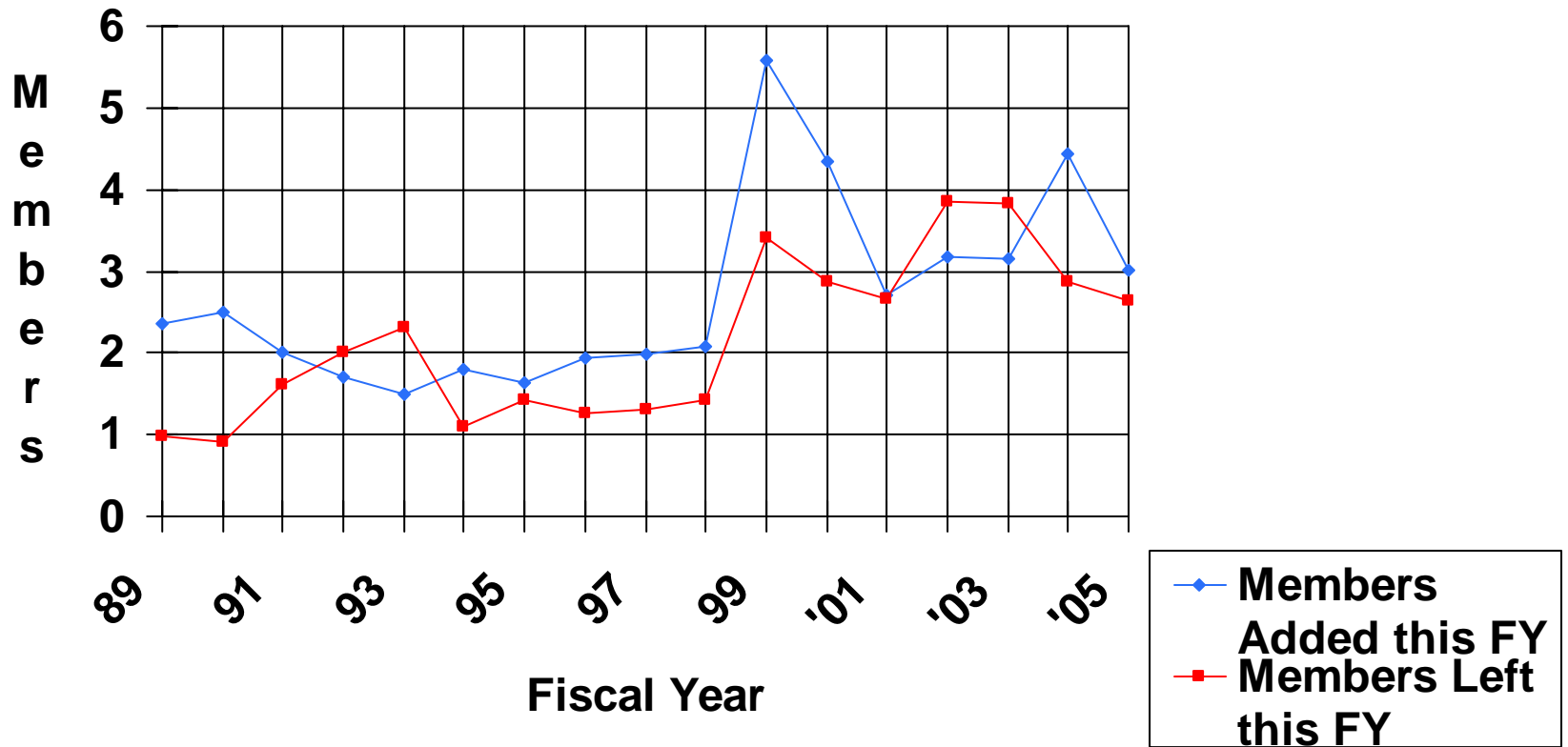
TOTAL NUMBER OF MEMBERS



AVERAGE NUMBER OF MEMBERS PER CENTER

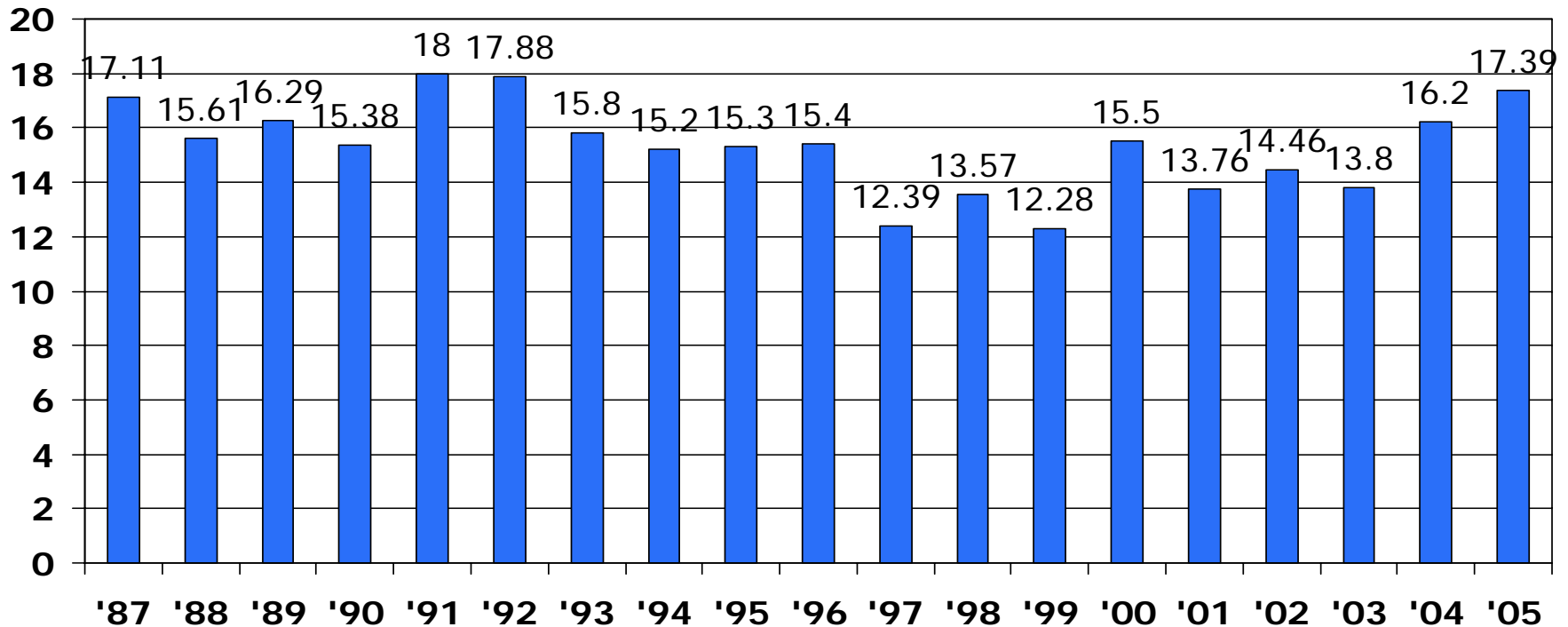


AVERAGE MEMBERSHIP TURN OVER



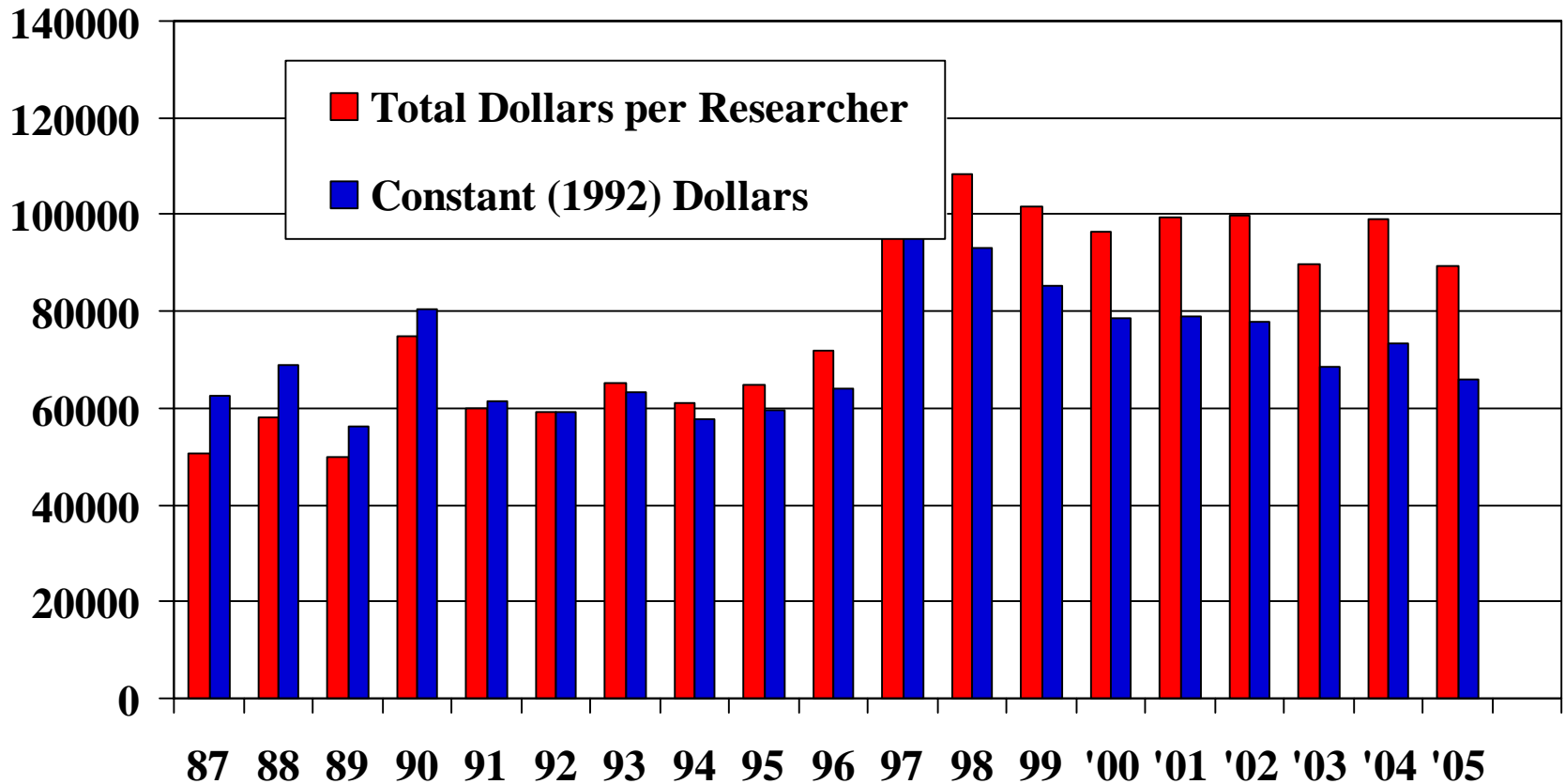
AVERAGE NUMBER OF RESEARCHERS PER CENTER / BY YEAR

FACULTY & POST DOC RESEARCHERS

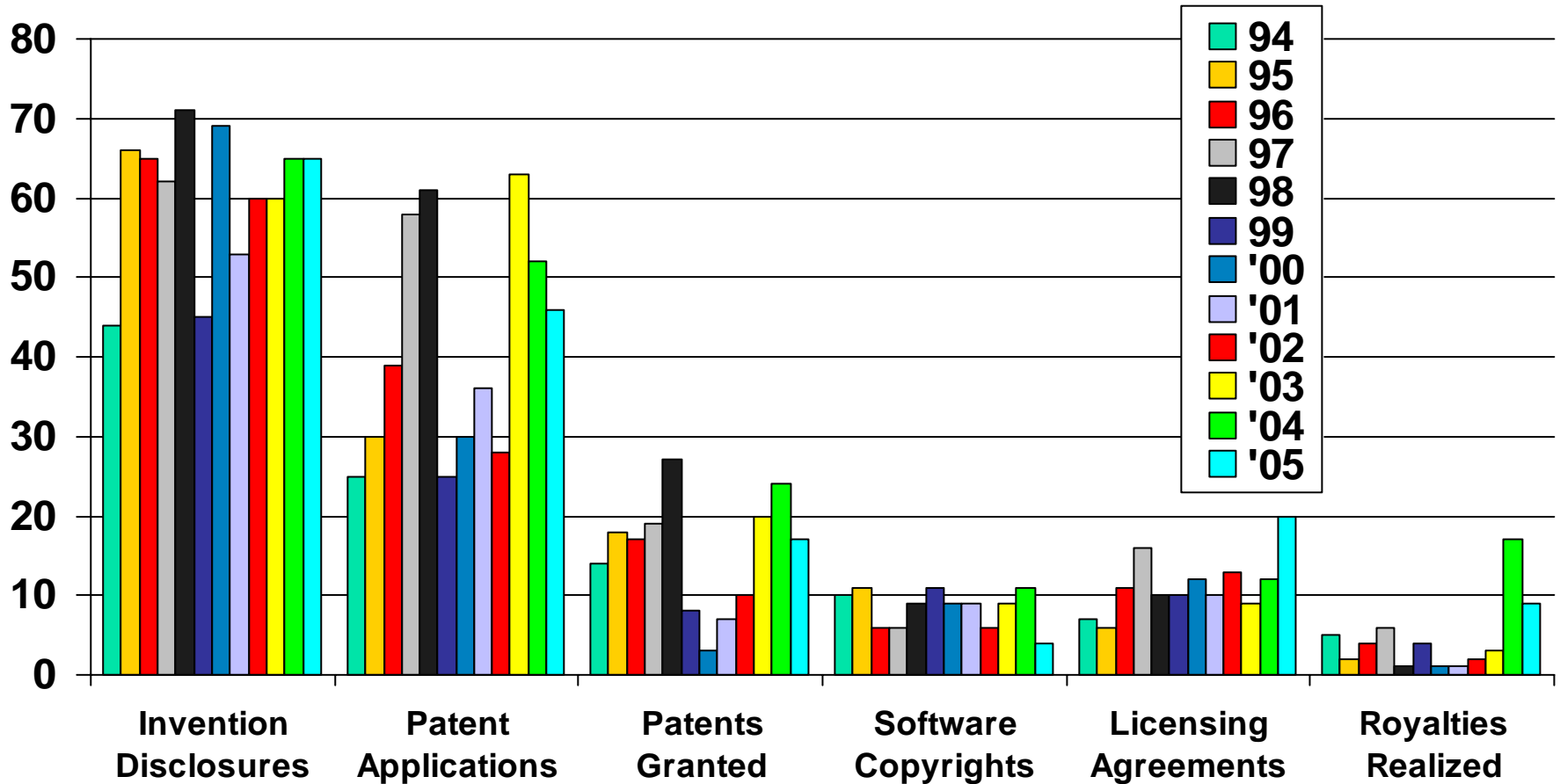


Note: As of 2003, NSF changed the label of “non-faculty” researchers to “post doc” researchers

FUNDING PER RESEARCHER TOTAL vs. CONSTANT DOLLARS



INTELLECTUAL PROPERTY EVENTS FY 94-04 TOTALS



AVERAGE NUMBER OF INTELLECTUAL PROPERTY EVENTS

