

# THE CONTAINER GARDEN COLLECTIONS



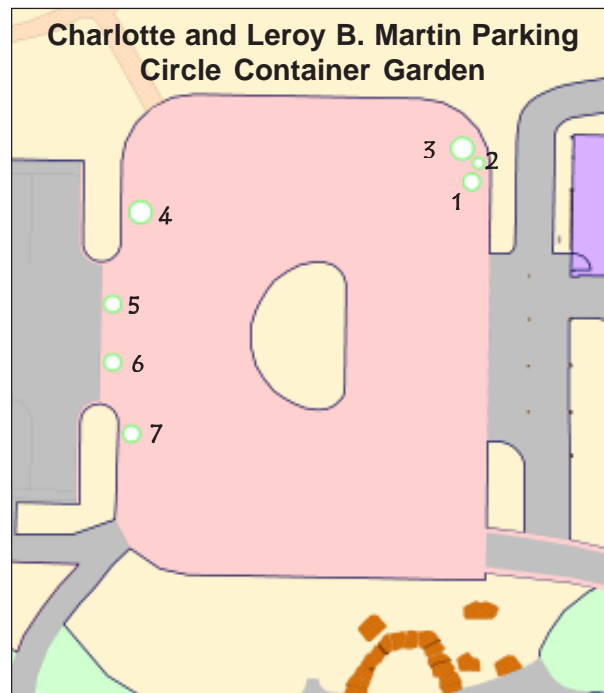
**Container 1.** *Buxus sinica* var. *insularis* 'Winter-green' – "Korean boxwood"; *Acalypha wilkesiana* 'Bourbon Street' – "copper plant"; *Alternanthera ficoidea* (white margin) – "Joseph's coat"; *Alternanthera ficoidea* 'Red Threads' – "Joseph's coat."

**Container 2.** *Yucca rostrata* – "Mexican blue yucca."

**Container 3.** *Zingiber mioga* 'Dancing Crane' – "ginger"; *Tibouchina urvilleana* – "princess flower"; *Calibrachoa* Superbells® Blue – "calibrachoa"; *Petunia x hybrida* 'Tiny Tunia Blue Ice' – "petunia"; *Ipomoea batatas* 'Blackie' – "ornamental sweet potato"; *Canna*.

**Container 4.** *Evolvulus glomeratus* 'Blue Daze' – "hairy evolvulus"; *Ipomoea batatas* 'Sweet Caroline Light Green' – "ornamental sweet potato"; *Pachystachys lutea* – "shrimp plant"; *Plumbago auriculata* – "Cape leadwort"; *Solanum laxum* 'Aureovariegatum' – "variegated potato vine."

**Container 5 and 6.** *Acalypha wilkesiana* – "copper plant"; *Breynia nivosa* 'Rosea Picta' – "snowbush"; *Colocasia esculenta* 'Black Magic' – "purple elephant ear"; *Hibiscus* 'Pink Versicolor' – "Confederate rose mallow"; *Solenostemon* – "coleus."



**Container 7.** *Heliotropium arborescens* 'Fragrant Delight' – "heliotrope"; *Phormium* 'Candy Stripe' – "New Zealand flax"; *Tibouchina urvilleana* – "princess flower"; *Verbena x hybrida* Superbena Blue Purple™ – "verbena."

**Container 8.** *Acalypha wilkesiana* – "copper plant"; *Duranta repens* – "golden dew drop"; *Ipomoea batatas* 'Blackie' – "ornamental sweet potato."

**Container 9.** *Pennisetum glaucum* 'Jester' – "purple millet"; *Pentas lanceolata* 'Stars and Stripes' – "variegated Egyptian star-cluster"; *Sedum* (variegated) – "variegated sedum"; *Stipa tenuissima* – Mexican feather grass; *Verbena x hybrida* Lanai™ Red II – "verbena."

**Container 10.** *Pelargonium* [Stellar Group] 'Vancouver Centennial' – "geranium"; *Pennisetum glaucum* 'Jester' – "purple millet"; *Picea glauca* var. *albertiana* 'Albertiana Conica' – "dwarf Alberta spruce"; *Isolepis cernua* – "fiber optic grass"; *Solenostemon scutellarioides* Stained Glassworks™ Midnight Train – "sun coleus"; *Solenostemon scutellarioides* 'Stained Glassworks™ Copper' – sun coleus."

**Container 11.** *Dahlia*; *Fuchsia* 'Coralie' – "triphylia hybrid fuchsia"; *Pennisetum glaucum* 'Jester' – "purple millet"; *Senecio cineraria* – "dusty miller"; *Solenostemon* – "coleus."

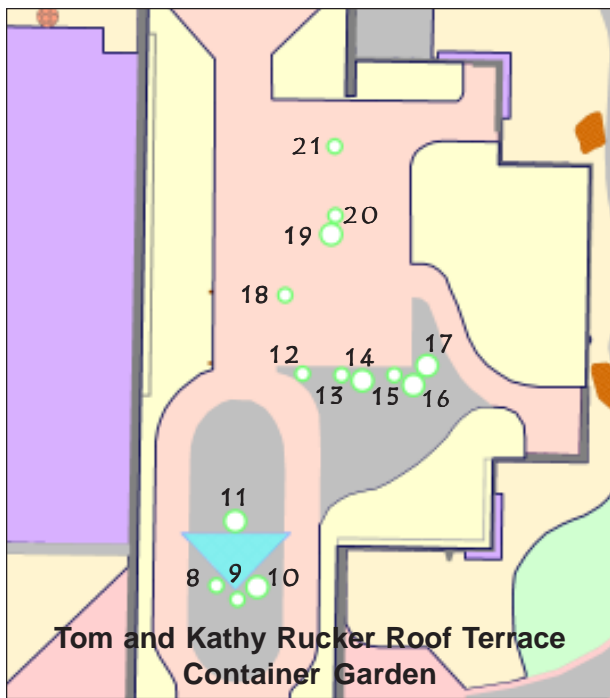
**Container 12.** *Petunia x hybrida* Suncatcher™ Coral Prism – "petunia"; *Solenostemon* – "coleus".

**Container 13.** *Lysimachia nummularia* 'Goldilocks' – "golden creeping jenny"; *Solenostemon* – "coleus."

**Container 14.** *Alternanthera ficoidea* 'Party time' – "Joseph's coat"; *Begonia* Dragon Wing Pink™ – "begonia"; *Senecio cineraria* – "dusty miller"; *Verbena x hybrida* Aztec™ Wild Rose – "verbena."

**Container 15.** *Yucca rostrata* – "Mexican blue yucca."

**Container 16.** *Calibrachoa* Minifamous™ Yellow – "calibrachoa"; *Cuphea ilavea* 'Georgia Scarlet' – "false heather"; *Euryops* 'Sunshine' – "euryops marguerite"; *Picea glauca* var. *albertiana* 'Albertiana Conica' – "dwarf Alberta spruce."



**Container 17.** *Pelargonium xhortorum* 'Wilhelm Langguth' – "geranium"; *Petunia xhybrida* 'Tiny Tunia Red' – "petunia"; *Verbena canadensis Aztec™* White – "verbena."

**Container 18.** *Dahlia*.

**Container 19.** *Cuphea rosea* 'Lavendar Lace' – "creeping Mexican heather"; *Heliotropium arborescens* 'Fragrant Delight' – "heliotrope"; *Plumbago auriculata* – "Cape leadwort"; *Vinca major* 'Wojo's Jem' – "variegated bigleaf periwinkle."

**Container 20.** *Ipomoea batatas* – "ornamental sweet potato"; *Pentas lanceolata* 'Stars and Stripes' – "variegated Egyptian star-cluster"; *Stipa tenuissima* – "Mexican feather grass"; *Verbena canadensis Aztec™* White – "verbena."

**Container 21.** *Calibrachoa* Minifamous™ Yellow – "calibrachoa"; *Lysimachia nummularia* 'Goldilocks' – "golden creeping jenny"; *Pelargonium* [Stellar Group] 'Vancouver Centennial' – "geranium"; *Sedum* (variegated) – "variegated sedum."

**Container 22 and 23. (McSwain Education Center Entry)** *Impatiens hawkeri* 'Super Sonic Red' – "New Guinea impatiens"; *Sutera Abunda™* Giant White – "white bacopa."



The JC Raulston Arboretum Container Garden Collection was specified in the original design of the Ruby C. Mc-

Swain Education Center undertaken by the architectural firm of Cherry, Huffman, and Associates in the early 1990s. They were manufactured by Dura Art Stone <[www.duraartstone.com](http://www.duraartstone.com)>, a California company specializing in the production of cast stone objects. Composed of a substance called Glascrete, a mixture of polyester resin, fine aggregates, and glass fibers this material provides a cast stone appearance at about one-fifth its weight.

The container gardens at the Arboretum are composed of twenty-three receptacles located in three distinct areas. The seven planters adjacent to the Visitor Center represent the Charlotte and Leroy B. Martin Parking Circle Container Garden named in honor of the winners of the 2004 Gala raffle to coin this particular grouping. The fourteen planters located on the rooftop terrace represent the Tom and Kathy Rucker Roof Terrace Container Garden, named for the Winston-Salem couple who funded them. Two additional containers filled with shade tolerant plants are located next to the entrance of the McSwain Education Center.



The JCRA is located near the State Fairgrounds at 4415 Beryl Road, Raleigh, NC.

**Hours:** Open year round. April through October 8:00 AM to 8:00 PM and November through March 8:00 AM to 5:00 PM.

**Admission:** Free to the general public.

**Facilities:** Restrooms and water fountains are available in the Ruby C. McSwain Education Center during posted hours. Restrooms in The Necessary are open during Arboretum hours.

**Special thanks** to Joanne Dewar and Susan Rollins of Fairview Greenhouses and Garden Center for their design of this year's container gardens as well as to Fairview Greenhouses and Garden Center and Campbell Road Nursery for their donation of the plants adorning them.



**JC Raulston Arboretum**  
**North Carolina State University**  
(919) 515-3132  
[www.ncsu.edu/jcraulstonarboretum](http://www.ncsu.edu/jcraulstonarboretum)

Designed by: Elaine Sisko  
2005 Bobby Wilder Intern