

**CONSTRUCTION CHECKLIST**

- 1- CONSULT LOCAL BUILDING CODES AND LENDING AGENCIES BEFORE BEGINNING CONSTRUCTION (ROOF FRAMING IS SHOWN FOR 30 PSF SNOW LOAD)
- 2- ACTUAL FOOTING SIZE & REINFORCING DEPENDS ON LOCAL SOIL CONDITIONS.
- 3- ADEQUATELY NAIL & ANCHOR JOINTS
- 4- SHEATH CORNERS WITH 1/2" PLYWOOD OR HIGH DENSITY FIBERBOARD, OR USE DIAGONAL BRACING.
- 5- USE EXTERIOR GLUE PLYWOOD WHENEVER IT MAY BE WETTED DURING OR AFTER CONSTRUCTION.
- 6- PRESSURE TREAT ALL WOOD IN GROUND CONTACT AND PROVIDE OTHER NEEDED TERMITE CONTROL
- 7- R-VALUES MAY BE ADJUSTED TO LOCAL TEMPERATURES AND FUEL COSTS.
- 8- PROVIDE 1 SQ. FT. MIN. OF ATTIC VENT OPENINGS PER 150 SQ. FT. OF CEILING AREA.
- 9- WEATHERIZE ALL OPENINGS AND JOINTS.



Helping people put knowledge to work.

**BUILDING DATA**

<b>SQUARE FOOTAGE:</b>	
HEATED	1586
PORCH	84
<b>TOTAL</b>	<b>1670</b>
<b>ESTIMATED HEATING LOAD:</b> 25,500 BTU/HR @ 60°F D	
<b>ESTIMATED COOLING LOAD:</b> 25,900 BTU/HR = 2 TONS*	

**FLOOR PLAN**  
SCALE: 1/4" = 1'-0"

SUGGESTED ORIENTATION

**ELECTRICAL SYMBOLS**

SYMBOL	DESCRIPTION
S	SINGLE-POLE SWITCH
S <sub>3</sub>	3-WAY SWITCH
D <sub>3</sub>	DIMMER SWITCH, 3-WAY
⊕	DUPLEX RECEPTACLE
⊕ WP	WEATHERPROOF " "
⊕	DUPLEX RECEPT. W/TOP RECEPT ON SWITCH
⊙	SPECIAL PURPOSE OUTLET
○	LIGHTING OUTLET
⊕	WALL BRACKET LIGHT
⊙	COMB. FAN, LIGHT, HEATER
⊕---	FLOO. STRIP IN SOFFIT, COVE, CABINET
⊙	CEILING FAN & LIGHT
⊕	WEATHERPROOF FLOODLIGHT

**WINDOW SCHEDULE**

MARK	SIZE	DESCRIPTION	NO. REQ'D
(A)	3-30" x 42"	DOUBLE HUNG, WOOD	2
(B)	2-30" x 42"	" " "	1
(C)	30" x 42"	" " "	3
(D)	30" x 30"	" " "	1
(E)	20" x 30"	" " "	1
(F)	30" x 60"	FIXED GLASS	1

**DOOR SCHEDULE**

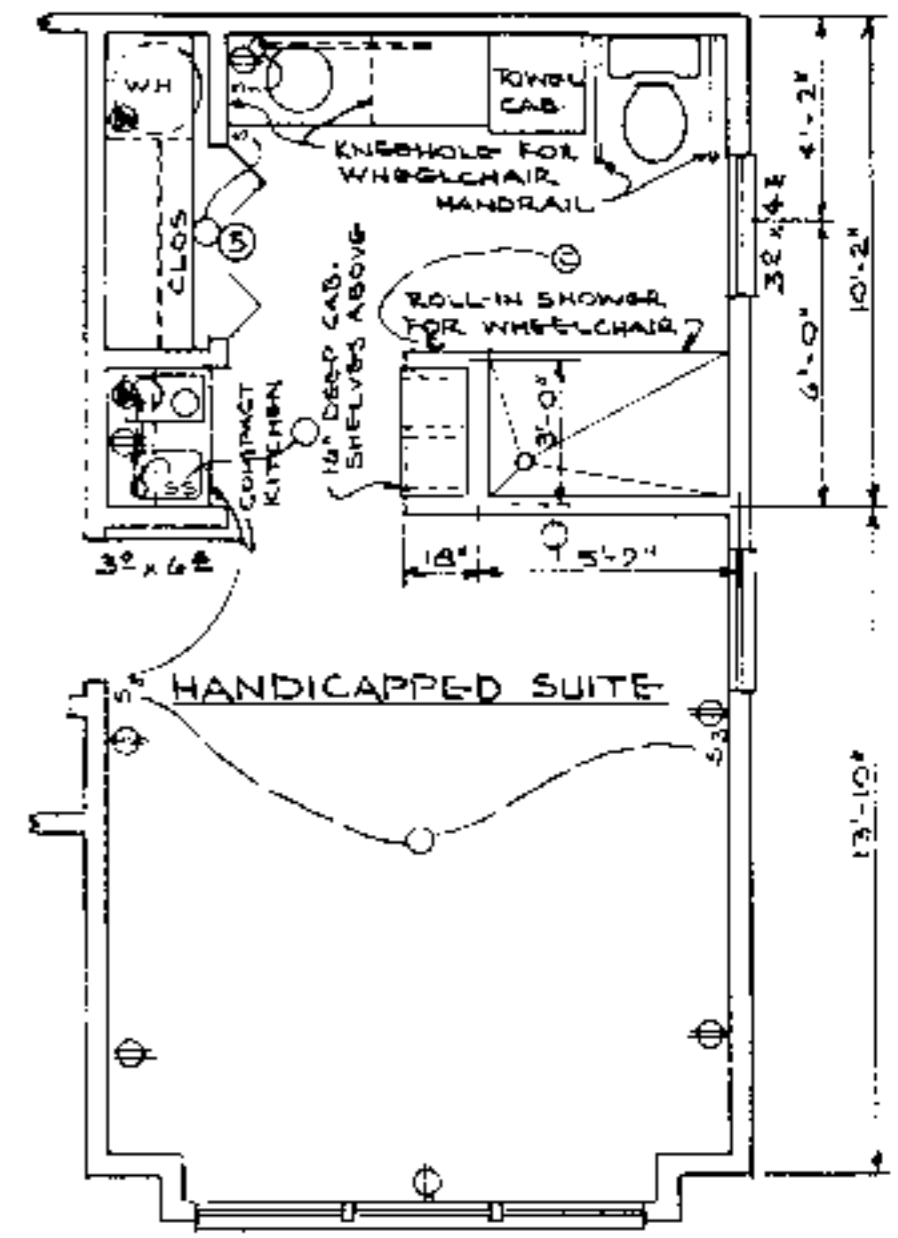
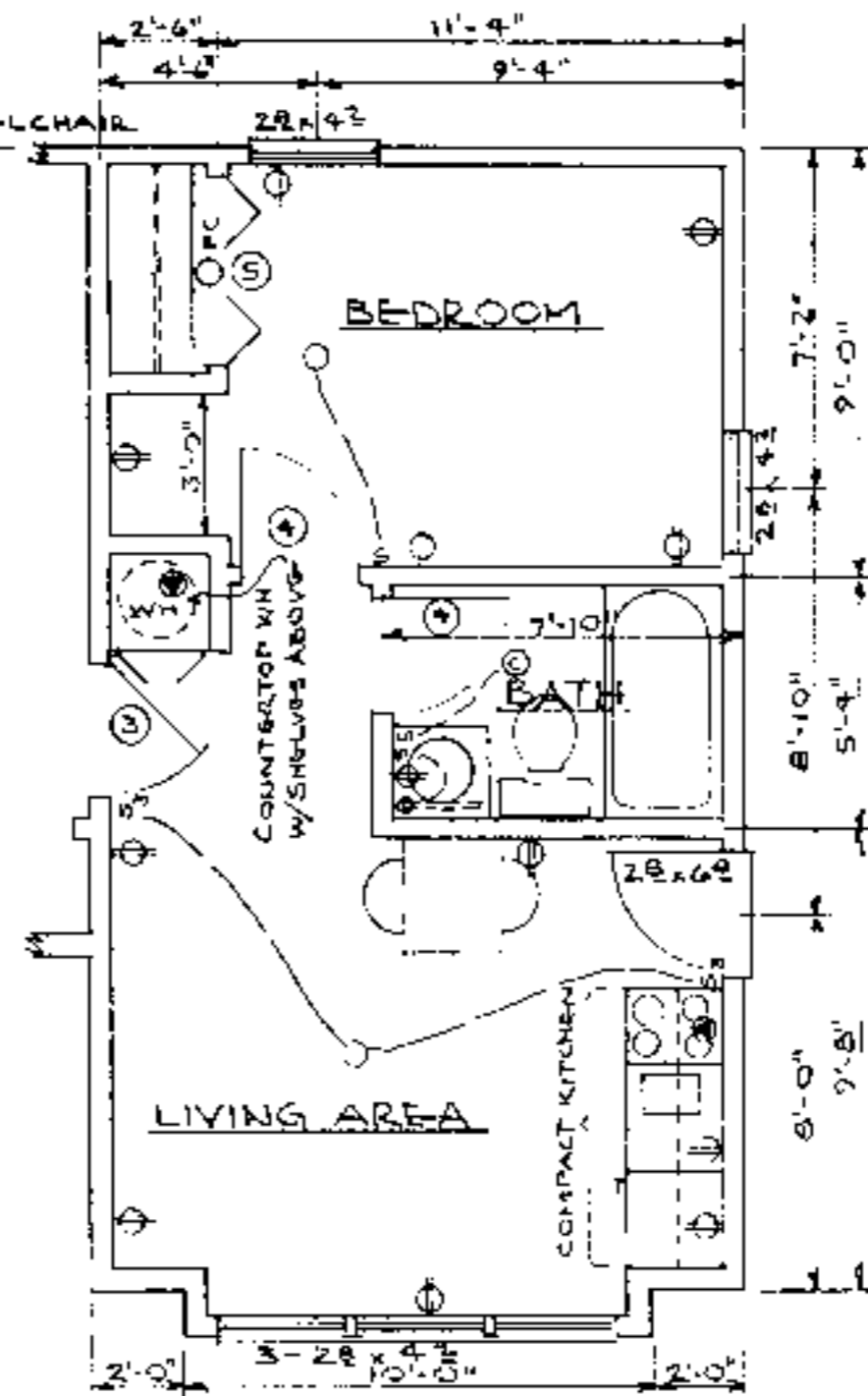
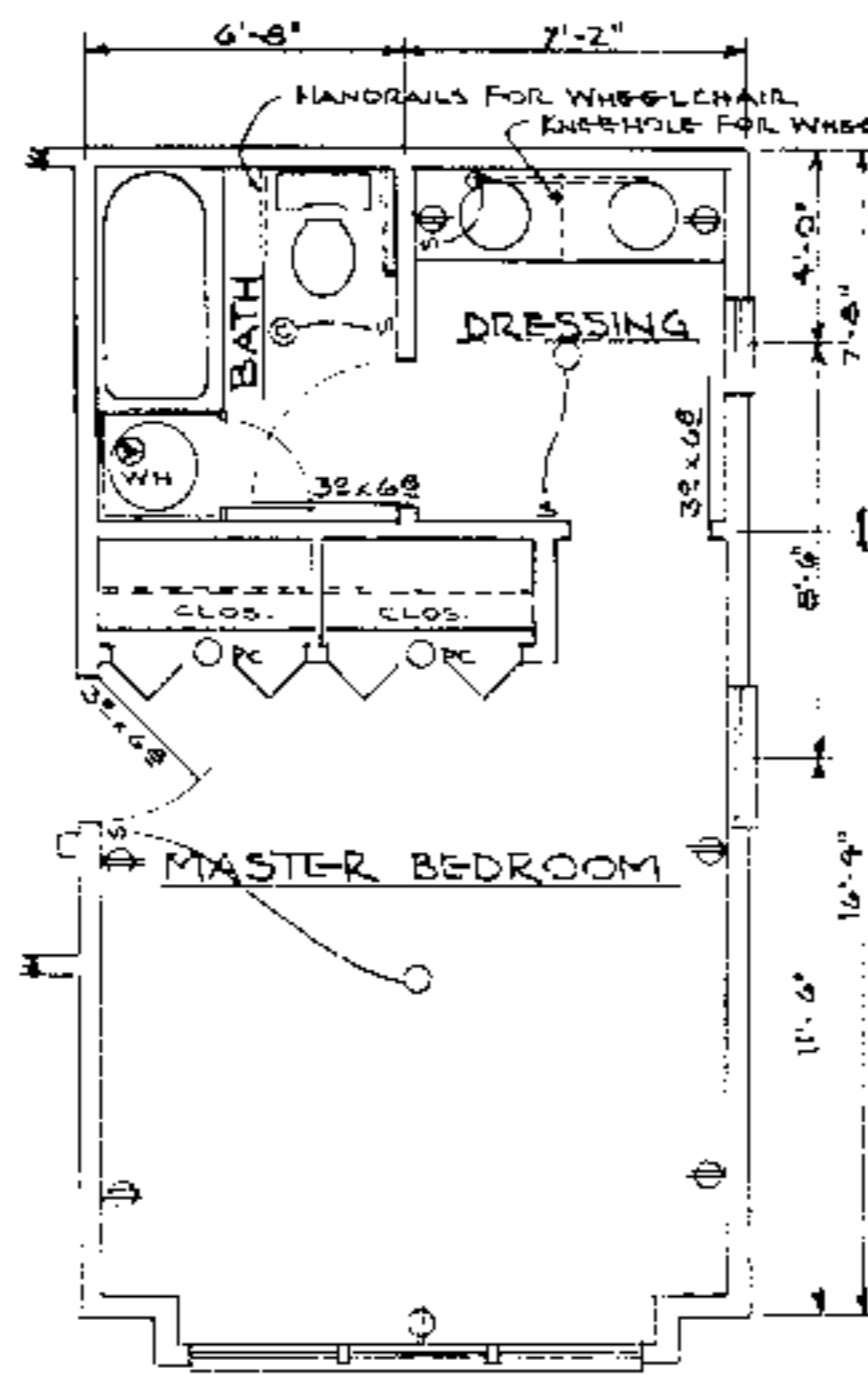
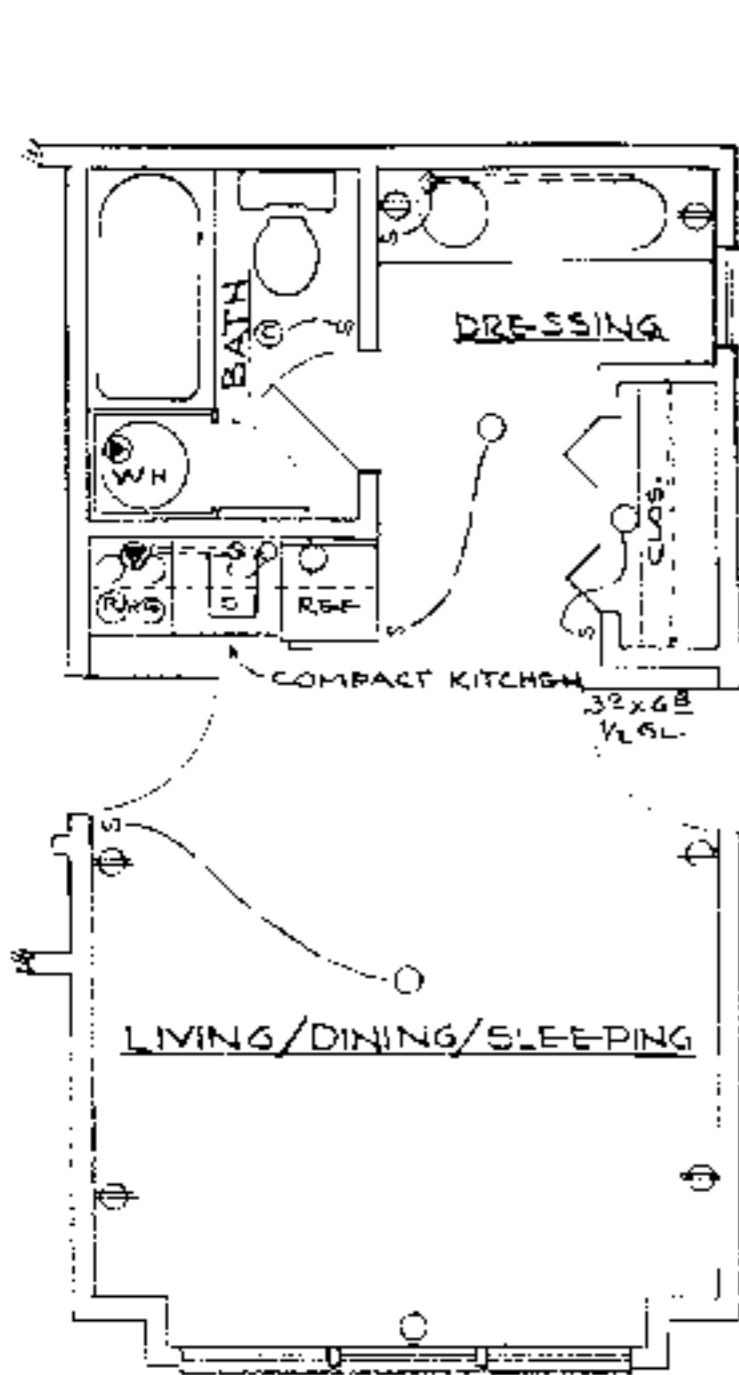
MARK	SIZE	DESCRIPTION	NO. REQ'D
(1)	30" x 60"	1 3/4" INSULATED STEEL, W/SIDE-LIGHT	1
(2)	20" x 60"	1 3/4" WOOD, GLASS	1
(3)	20" x 60"	1 3/8" HOLLOW CORE FLUSH BIRCH	3
(4)	20" x 60"	" " " " " "	3
(5)	40" x 60"	1 3/8" LOUVER, BI-FOLD	3
(6)	50" x 60"	" " " " " "	2
(7)	60" x 60"	" " " " " "	1

ALL WINDOWS SHALL BE NWMA CERTIFIED, WITH DOUBLE GLAZING OR STORM SASH.

**N.C. AGRICULTURAL EXTENSION SERVICE**  
HOME ECONOMICS — HOUSING  
N.C. State University, Raleigh, North Carolina  
and  
U.S. Department of Agriculture, Cooperating

**3-BEDROOM HOUSE**  
**W/APARTMENT OPTION**

REV. OF USDA 7234 N.C. 10 '86 Sheet 1 of 3



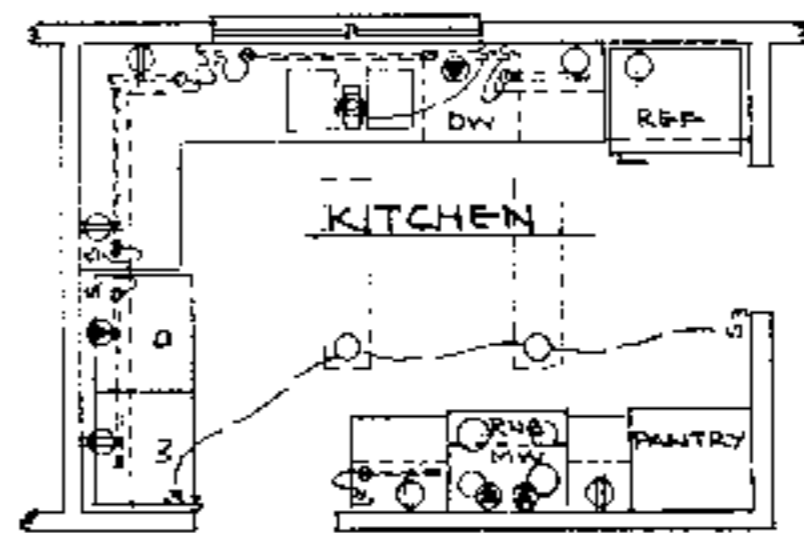
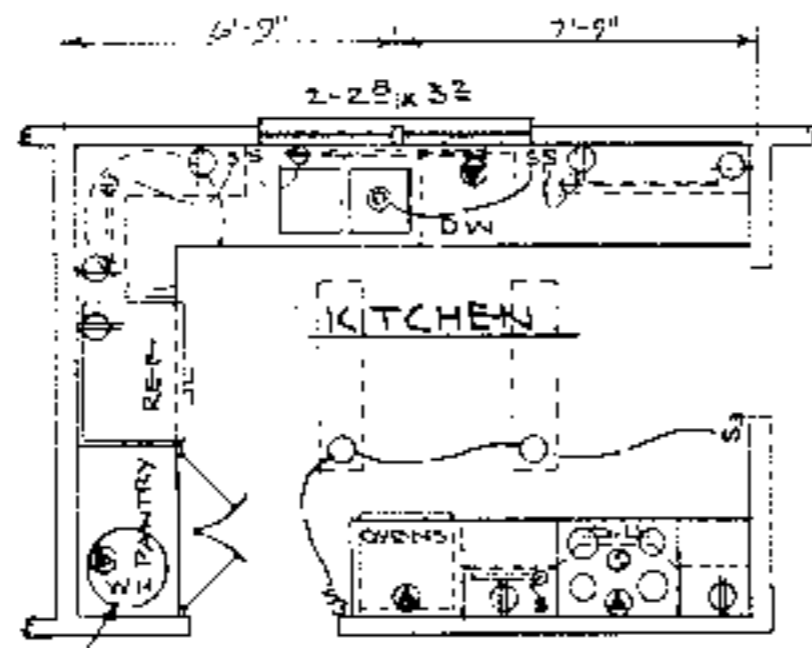
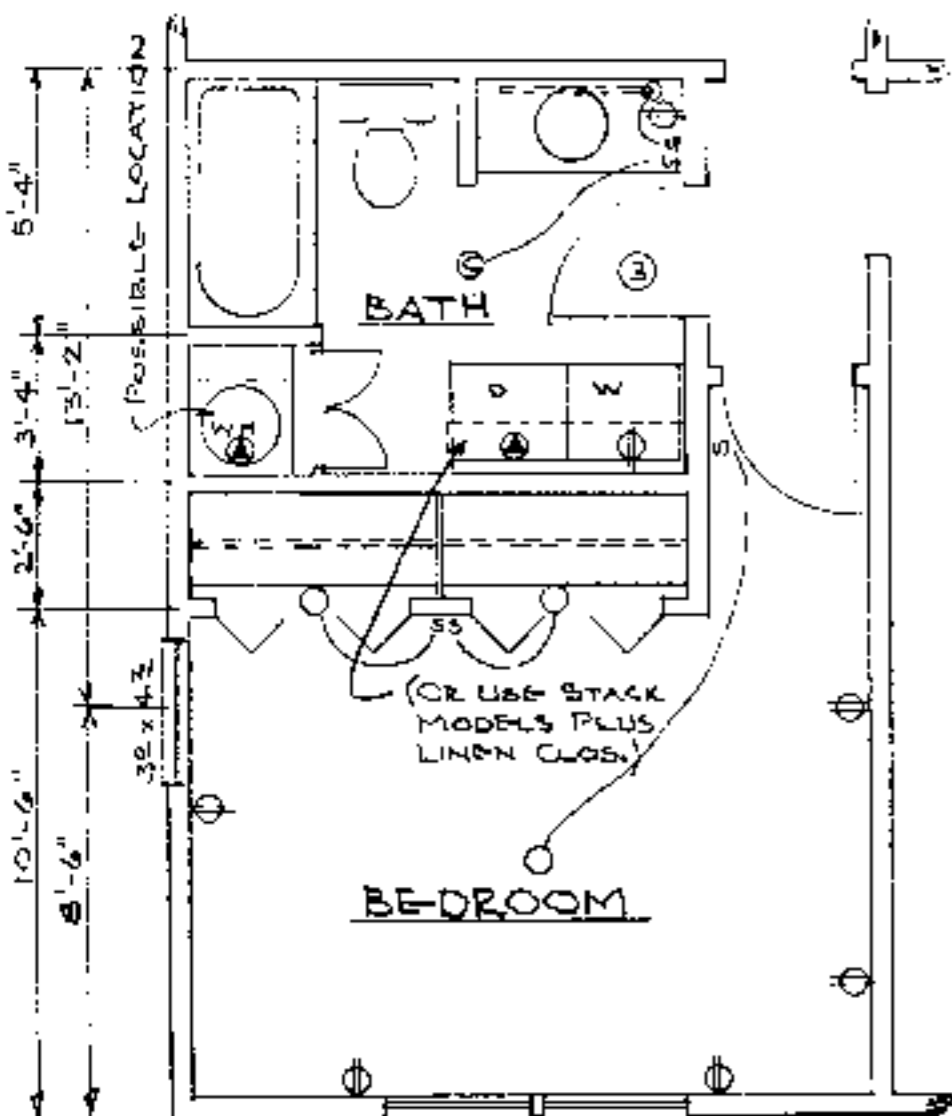
#1 - EFFICIENCY APT. IN MASTER BEDROOM AREA  
FLOOR PLAN

#2 - MASTER BEDROOM W/ DOORS FOR WHEELCHAIR

#3 - 1 BEDROOM APT. IN MASTER BEDROOM AREA

#4 - HANDICAPPED SUITE IN MASTER BEDROOM AREA

SCALE: 1/4" = 1'-0"



#1 (WITH LAUNDRY MOVED TO BATHROOM - BATH OPT. #1)  
FLOOR PLAN OPTIONS - KITCHEN

#2

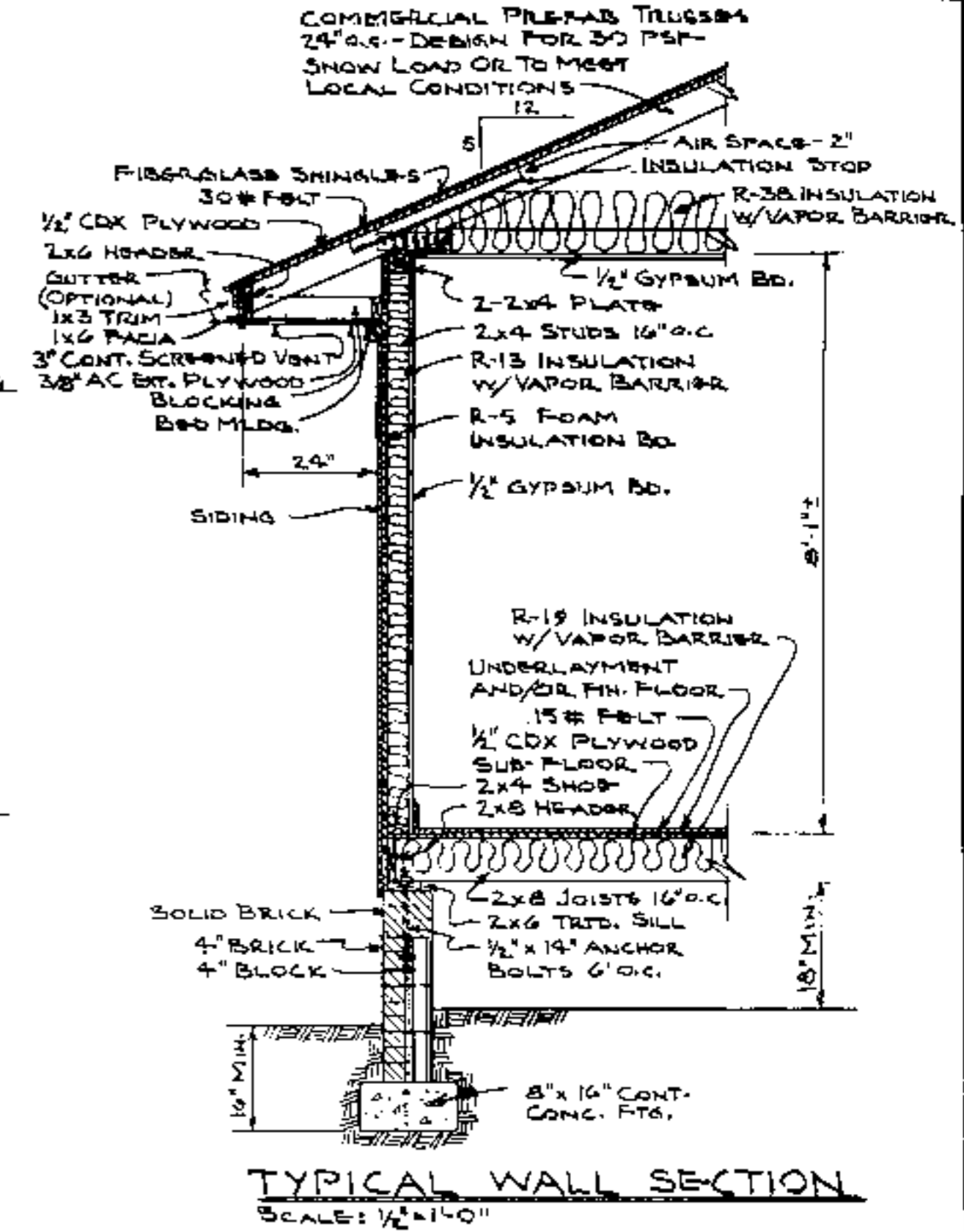
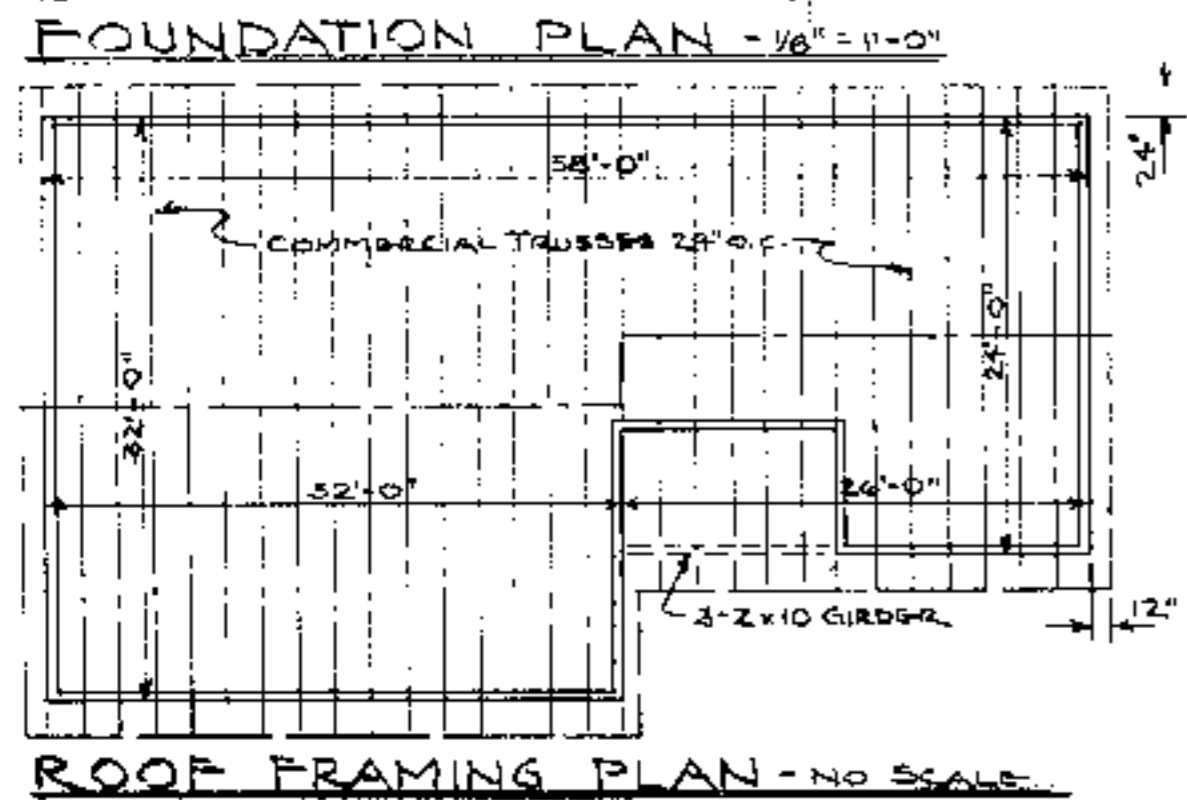
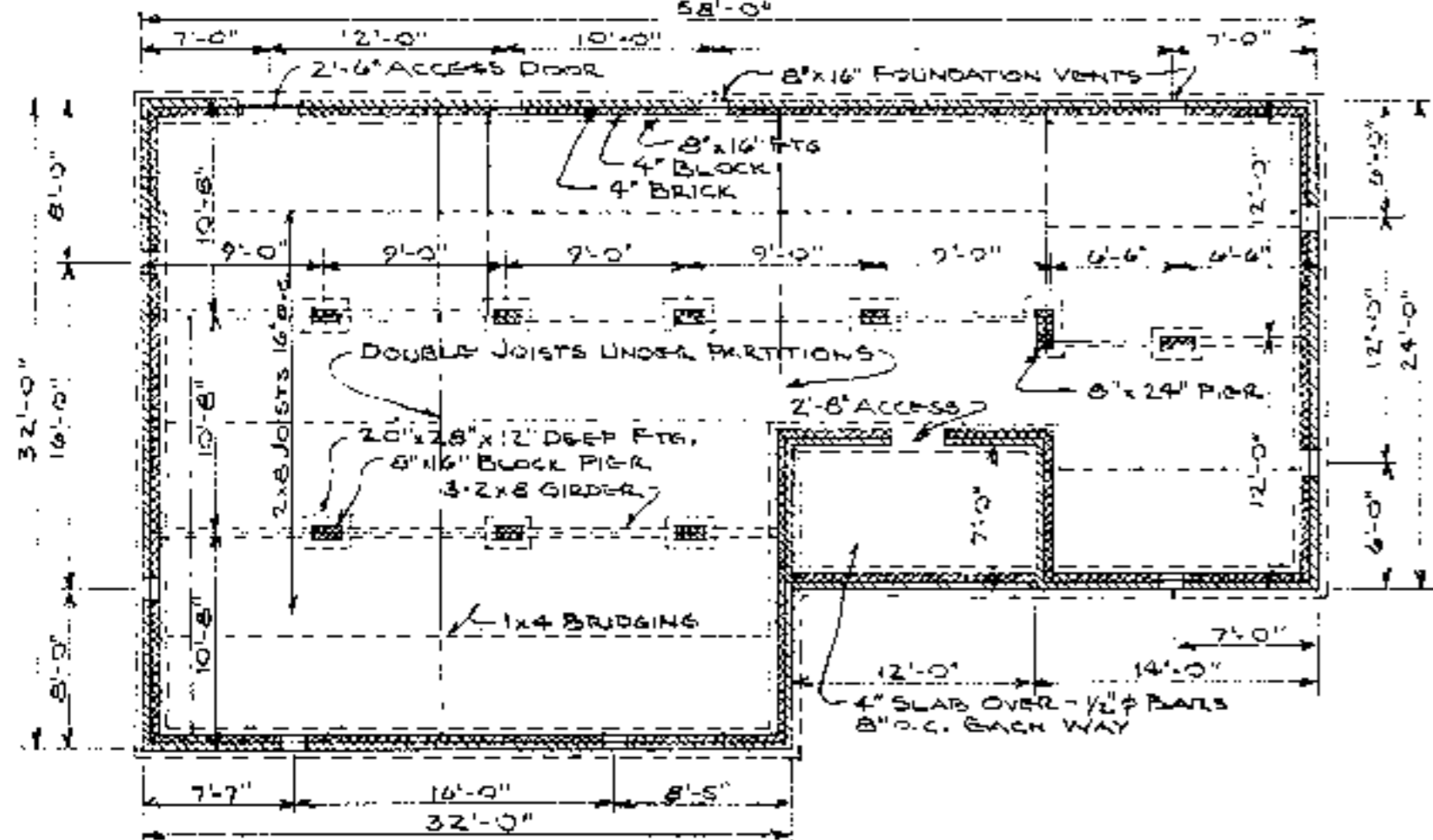
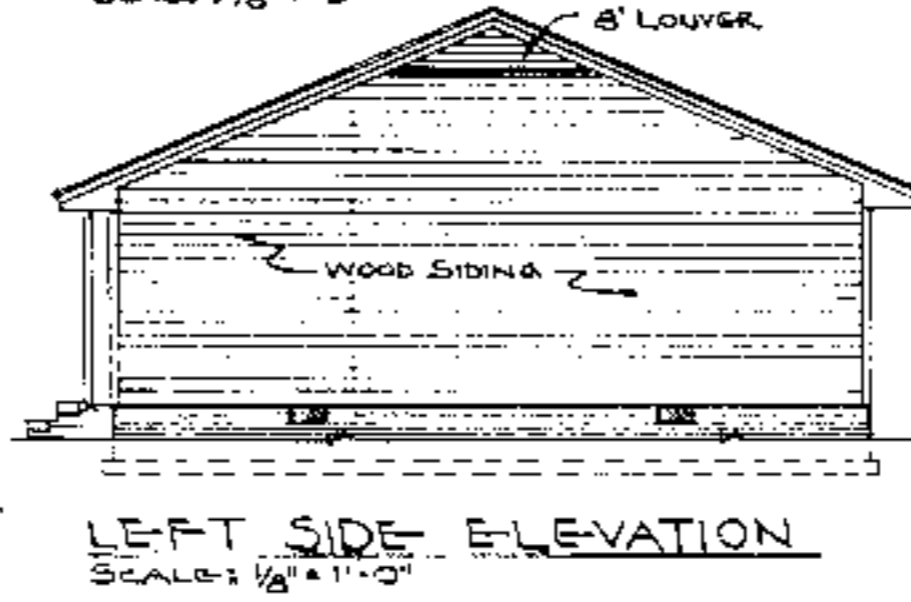
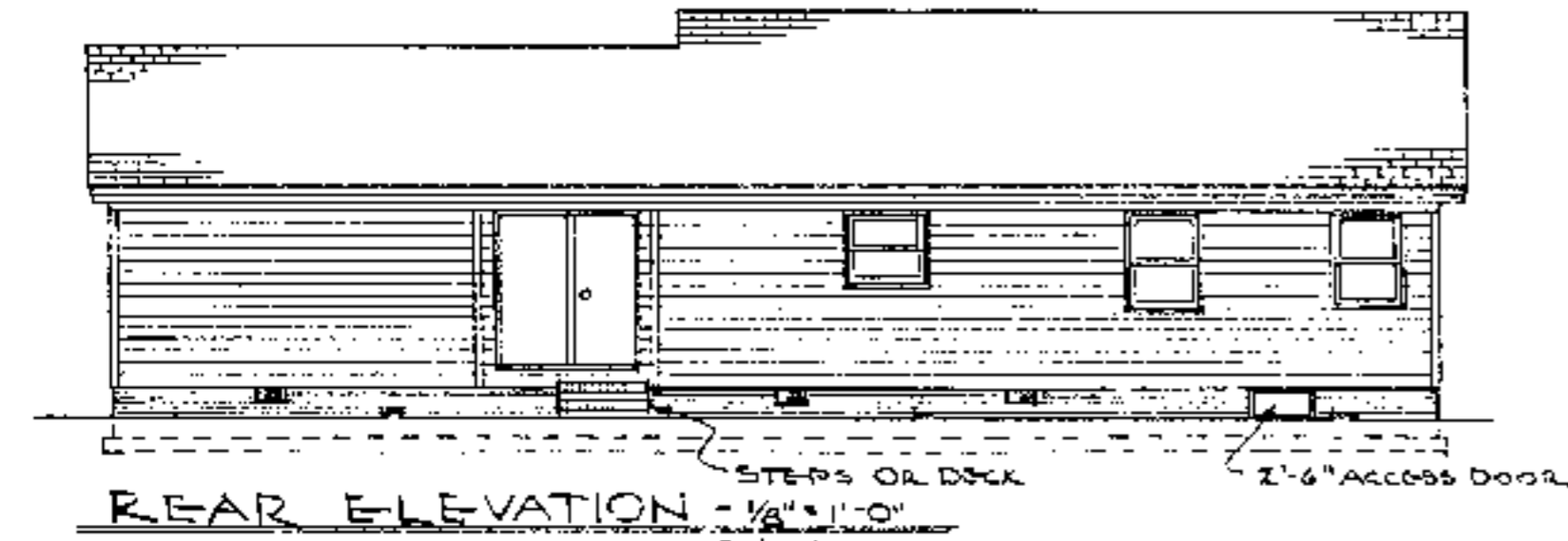
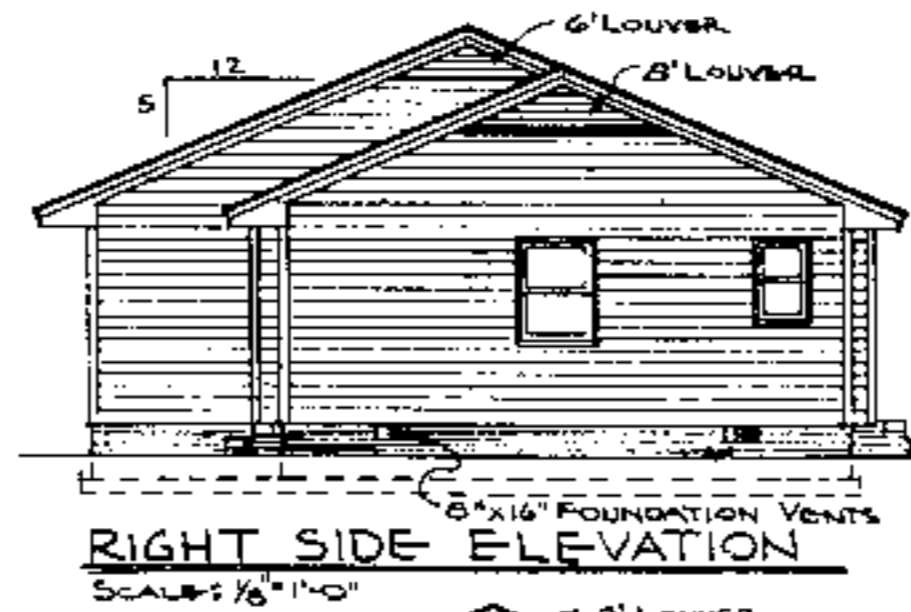
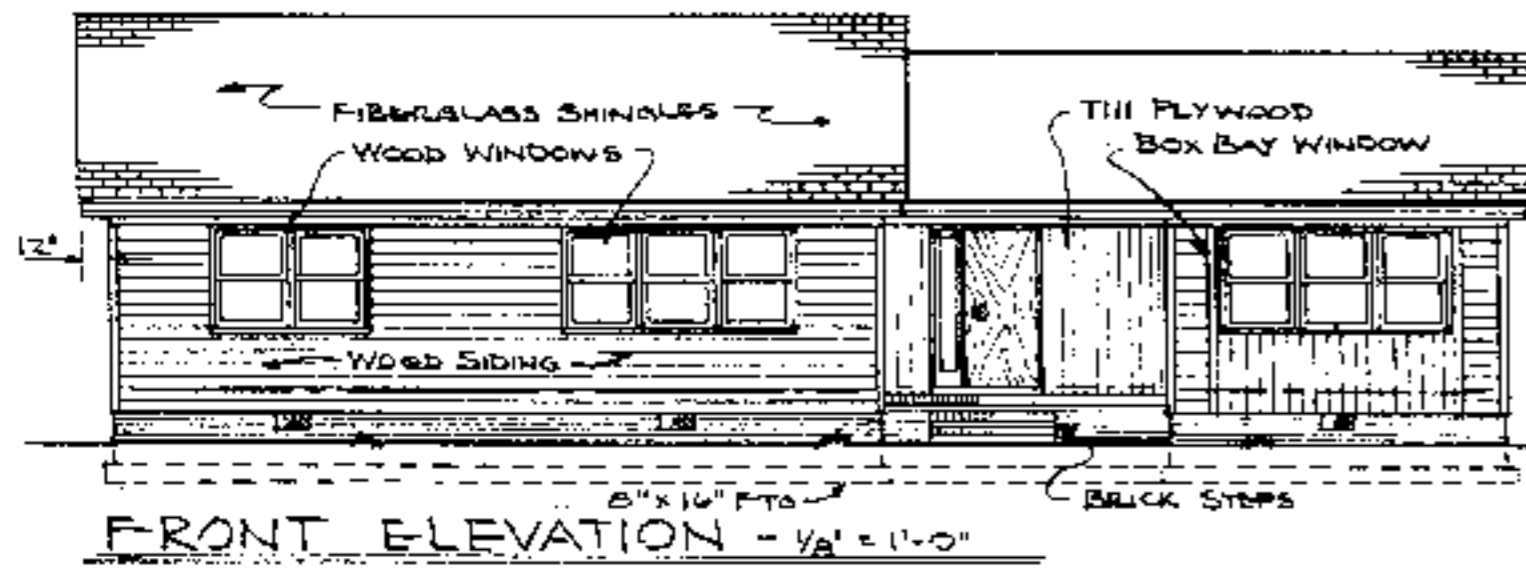
SCALE: 1/4" = 1'-0"

BATHROOM OPTION #1  
(LAUNDRY IN BATHROOM)  
SCALE: 1/4" = 1'-0"

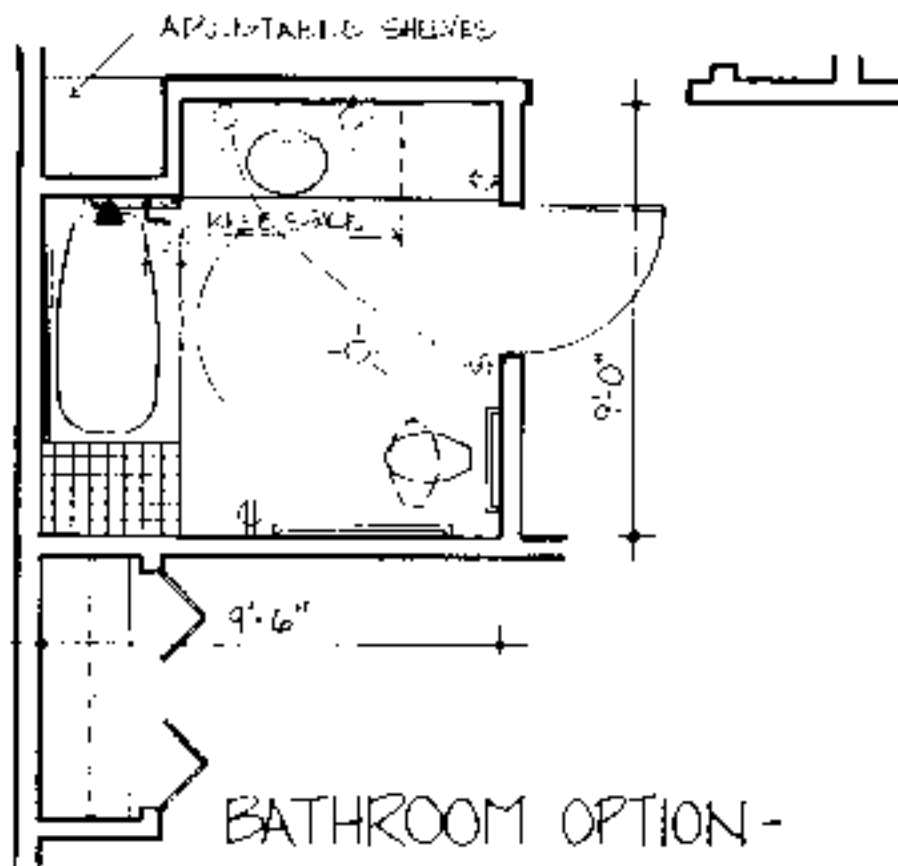


Helping people put knowledge to work.

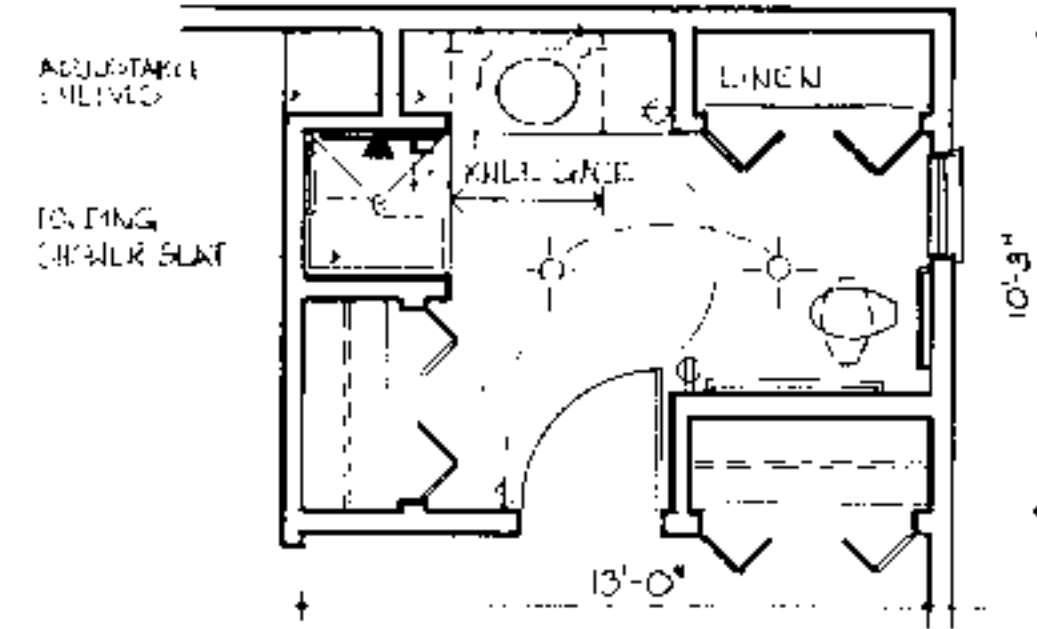
N.C. AGRICULTURAL EXTENSION SERVICE			
HOME ECONOMICS — HOUSING			
N.C. State University, Raleigh, North Carolina and U.S. Department of Agriculture, Cooperating			
3-BEDROOM HOUSE W/APARTMENT OPTION		1586 Sq. Ft. HTD	
REV. OF USDA 7234	N.C. 10	'85	Sheet 2 of 3



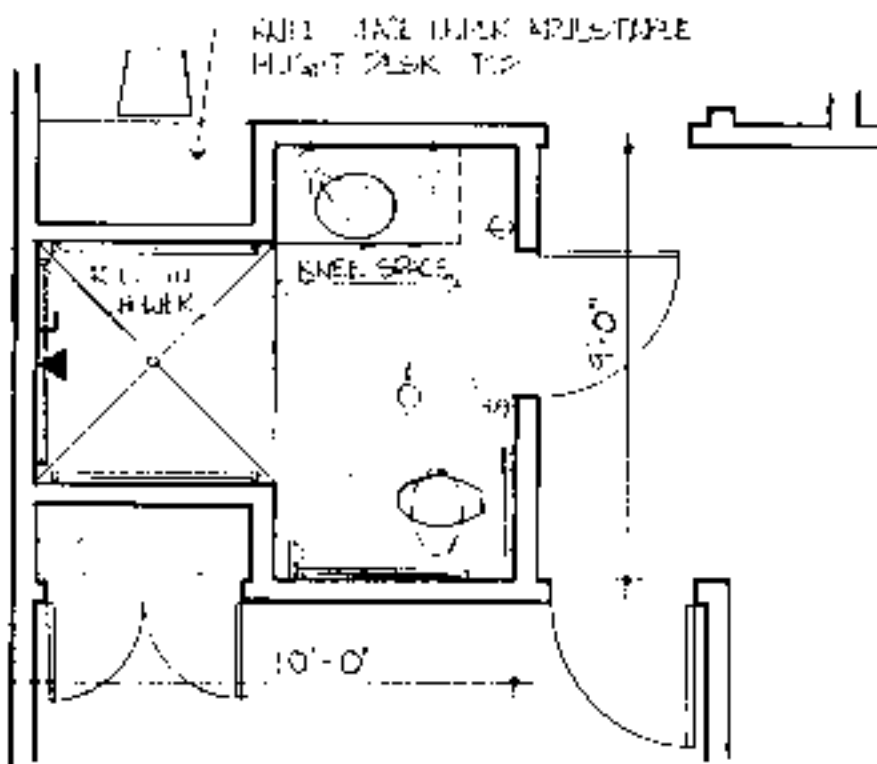
<b>N.C. AGRICULTURAL EXTENSION SERVICE</b> HOME ECONOMICS — HOUSING N.C. State University, Raleigh, North Carolina and U.S. Department of Agriculture, Cooperating	
<b>3-BEDROOM HOUSE</b> W/APARTMENT OPTION	1566 Sq. Ft. HTD
REV. OF USDA 7234	N.C. 10 '88 Sheet 3 of 3



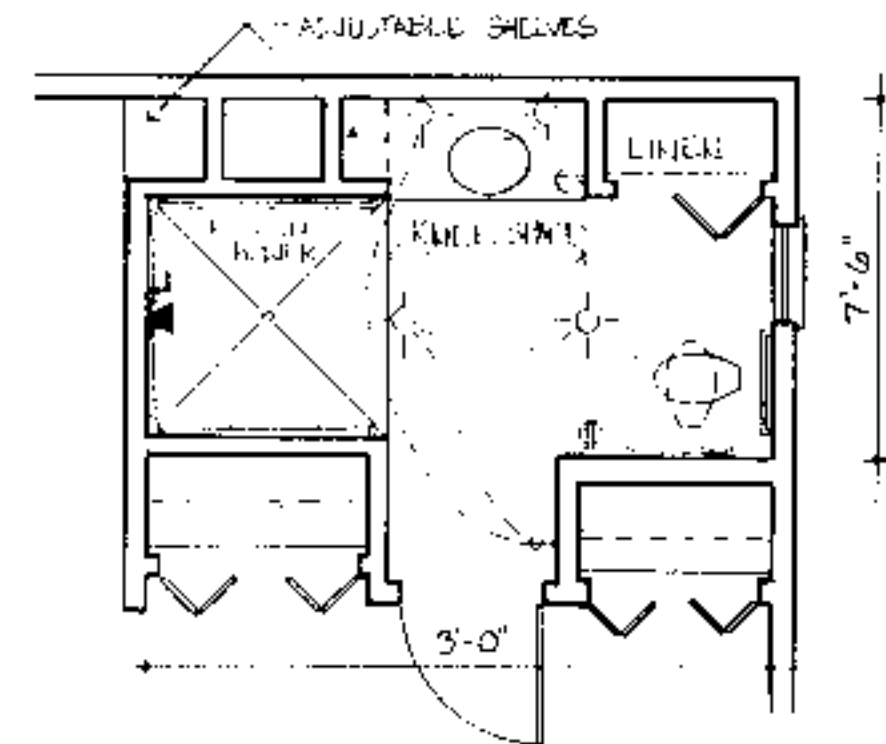
BATHROOM OPTION -  
BUILT IN TRANSFER SURFACE AT TUB  
1/4" = 1'-0"



BATHROOM OPTION - 3' x 3' TRANSFER SHOWER  
1/4" = 1'-0"



BATHROOM OPTION - 5' x 5' ROLL IN SHOWER  
1/4" = 1'-0"



BATHROOM OPTION - 5' x 5' ROLL IN SHOWER  
1/4" = 1'-0"

House # 1

Door Schedule		Symbol	
Mark	Size	Description	No. Required
1	3'0" x 6'8"	exterior hardwood w/side light	1
2	3'0" x 6'8"	interior hardwood	5
3	3'0" x 6'8"	exterior hardwood	1
4	5'0" x 6'8"	interior bifold	2
5	4'6" x 6'8"	interior bifold	2
6	3'6" x 6'8"	interior bifold	1
7	3'0" x 6'8"	int. hardwood (closet)	1

Window Schedule		Symbol	
Mark	Size	Description	No. Required
A	9'0" x 5'2"	casement	2
B	6'0" x 5'2"	casement	1
C	3'0" x 5'2"	casement	3
D	4'0" x 3'2"	casement	1
E	3'0" x 6'0"	fixed glass	1
F	2'0" x 3'2"	casement	1

**DISCLAIMER** These plans are supplements to plans offered by the NC Cooperative Extension Service. They are intended to improve access for people with mobility impairments and are provided for information purposes only. It is the responsibility of the contractor and owner to comply with all applicable federal, state and local codes, ordinances and regulations in the construction of the house. Modifications to these plans will be needed to meet special individual needs of people with disabilities, and may also be necessary to comply with specific requirements for energy codes, wind, seismic, snow or other special loading conditions. This set must be used in conjunction with the Extension Service plans and all dimensions notes and recommended details. Must be co-ordinated with the original set and verified in the field by the owner and contractor. For information on product manufacturers contact the Center for Accessible Housing.

BUILDING DATA	
# Bedrooms	3
Square Footage: heated	1586
storage/porch	136
total	1722

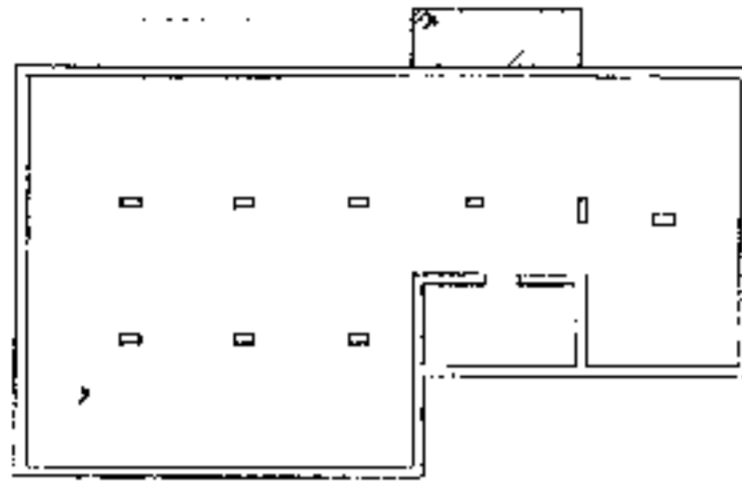
**PLAN DATA**  
Adapted by: C. Sanchez  
Drawn by: C. Humkey  
Approved by: R. Mace

Center for Accessible Housing  
School of Design  
NCSU  
Box 8613  
Raleigh, NC 27695-8613  
919.515.3082 voice/TDD  
919.515.3023 fax

Accessible House Plan # 102  
Adapted from NC Collection Plan # 10  
North Carolina Cooperative Extension Service  
NCSU Home Economics - Housing  
Box 7605  
Raleigh, NC 27695-7605  
US Department of Agriculture, Cooperating

**PLAN DATA**  
Sheet 3 of 6  
Date May 95

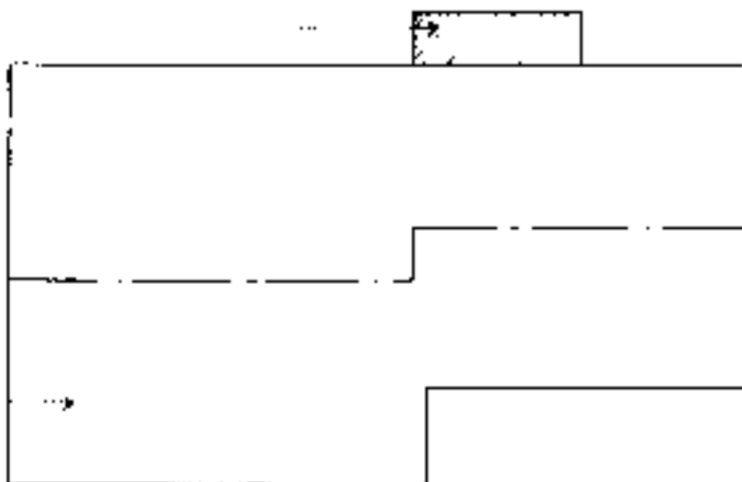
AMENDED ACCESSIBLE  
FOUNDATION AREA  
REVISE AS NECESSARY



FOUNDATION PLAN  
SEE ORIGINAL PLANS  
FOR DIMENSIONS, NOTES, ETC.

KEY FOUNDATION PLAN  
NO SCALE

AMENDED ACCESSIBLE  
FOUNDATION AREA  
REVISE AS NECESSARY



FOUNDATION PLAN  
SEE ORIGINAL PLANS  
FOR DIMENSIONS, NOTES, ETC.

KEY ROOF FRAMING PLAN  
NO SCALE

INFORMATION

Supplemental Accessible House Plan # 10A

Adapted from and to be used in conjunction with original plan # NC 10

SEE ORIGINAL PLANS FOR ALL WALL SECTIONS, INTERIOR ELEVATIONS, DETAILS, CONSTRUCTION  
DETAILS, SCHEDULES AND MISCELLANEOUS INFORMATION.

**DISCLAIMER** These plans are supplements to plans offered by the NC Cooperative Extension Service. They are intended to improve access for people with mobility impairments and are provided for information purposes only. It is the responsibility of the contractor and owner to comply with all the applicable federal, state and local codes, ordinances and regulations in the construction of the house. Modifications to these plans will be needed to meet special individual needs of people with disabilities and may also be necessary to comply with specific requirements for energy codes, wind, seismic, snow or other special loading conditions. This set must be used in conjunction with the Extension Service plans and all dimensions, notes and recommended details must be coordinated with the original set and verified in the field by the owner and contractor. For information on product manufacturers contact the Center for Accessible Housing.

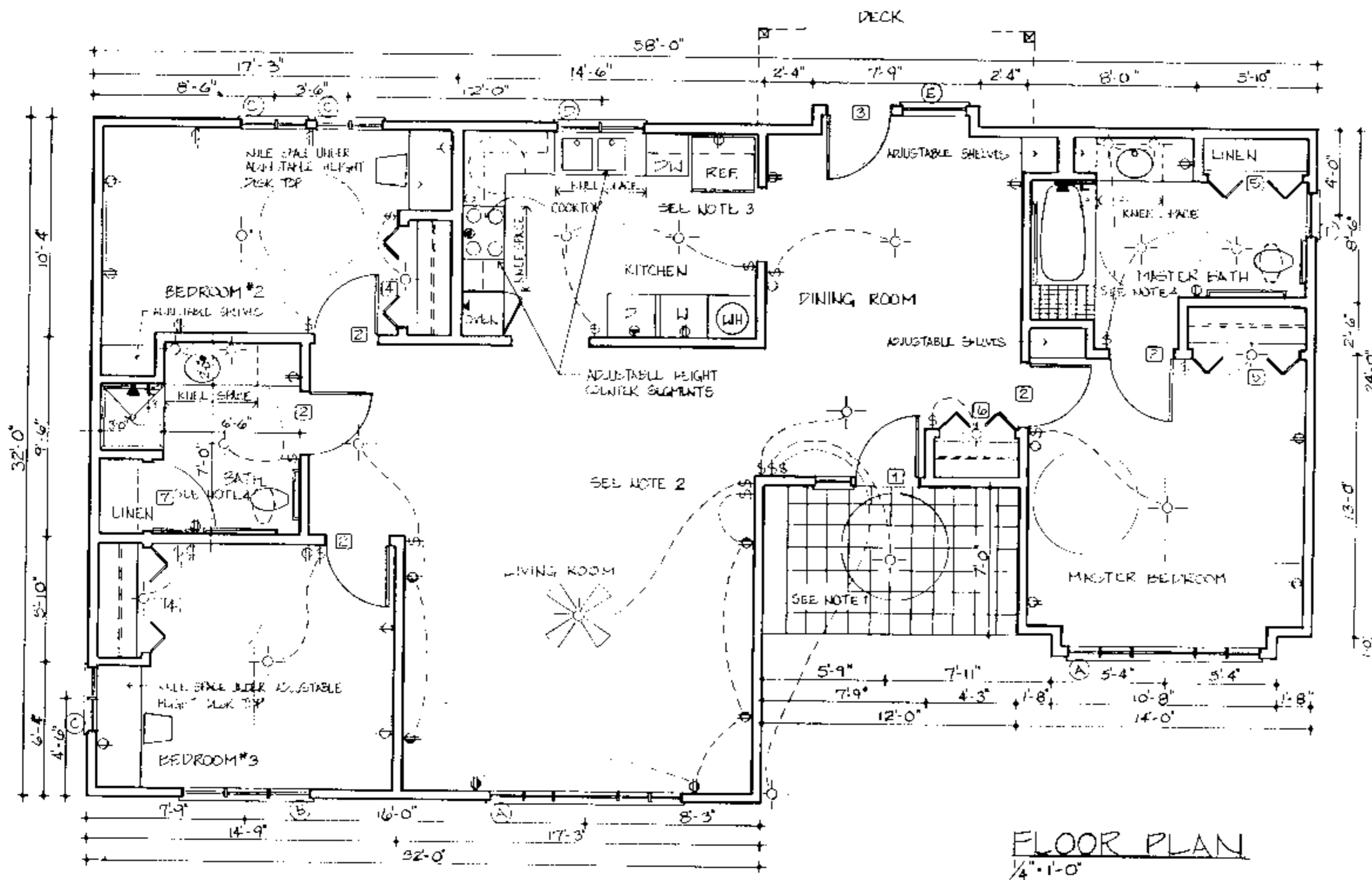
BUILDING DATA	
# Bedrooms	3
Square Footage: heated	1586
Storage/porch	136
total	1722

**PLAN DATA**  
Adapted by: C. Sanchez  
Drawn by: C. Humkey  
Approved by: R. Moore

Center for Accessible Housing  
School of Design  
NCSU  
Box 8613  
Raleigh, NC 27695-8613  
919.515.3082 voice/TDD  
919.515.3023 fax

Accessible House Plan # 10A  
Adapted from NC Collection Plan # 10  
North Carolina Cooperative Extension Service  
NCSU Home Economics - Housing  
Box 7605  
Raleigh, NC 27695-7605  
US Department of Agriculture, Cooperating

**PLAN DATA**  
Sheet 1 of 6  
Date May 93



**Note 1. Entrance**

- Viewing window glass or sidelights or high/low peep hole viewer or extreme wide angle lens viewer for security
- Level clear floor area both inside and outside of door to provide maneuvering space at doors
- 36-inch wide doors
- Maximum of 1/4-inch vertical change in level at thresholds and other changes in level
- Lever handle on doors
- 12-inch wide outside shelf for packages

**Note 2. General**

- Electrical receptacles are to be placed at easy to reach height: electrical outlets 18 inches above floor, light switches 38 inches above floor
- Additional electrical outlets in bedrooms to accommodate assistive devices
- Thermostats/controls 44 inches above the floor
- Rocker light switches
- 42-inch clearance in hallways, 32-inch width minimum clear opening width in doorways, 24-inch wide space on latch side of doors on pull side
- Lever handle on doors. Auxiliary handles on doors for ease in closing. Loop type handles 30-36 inches above floor and 6 inches from hinge edge on pull side.
- Window sill between 18 and 36 inches above the floor
- Casement windows
- Smooth dense floor coverings for easy maneuvering
- Adjustable height closet rods and storage shelves from 3'-0" to 5'-6"

**Note 3. Kitchen**

- Counter segments elevation can be set at different heights from 30 to 36 inches.
  - Kneespace with pipe protection panel or base cabinets at key locations
  - Front mounted controls on the stove
  - Loop cabinet handles and drawer pulls
  - 5' diameter turning space
  - Lever handle faucet
  - Cabinet doors sliding or spring loaded hinges on cabinet doors
  - Cabinets with full extension pull out shelves
  - Lazy Susans
  - Side-by-side refrigerator/freezer
  - Adaptable removable base cabinets
- See sheet 5 for adjustable sink and counter detail, section at garbage disposal enclosure detail, and counter support bracket detail.

**Note 4. Bathrooms**

- Hand held shower head
  - Lever handle faucets
  - Offset controls in tub/shower
  - Open front lavatory with knee space with protection panel
  - 5' diameter turning space
  - Dual lever faucet controls permit easy manipulation of the flow of water and water temperature
  - Reinforced walls to accommodate grab bars. Suggested grab bar locations are as required by ANSI. Actual location may need to meet individual needs. Full wall reinforcement, as specified, allows for any position or height to be accommodated.
- See sheets 5 & 6 for section at bathroom counter and sink detail, and typical suggested roll-in shower floor and drain detail at wood frame construction.

**DISCLAIMER** These plans are supplements to plans offered by the NC Cooperative Extension Service. They are intended to improve access for people with mobility impairments and are provided for information purposes only. It is the responsibility of the contractor and owner to comply with all applicable federal, state and local codes, ordinances and regulations in the construction of the house. Modifications to these plans will be needed to meet special individual needs of people with disabilities and may also be necessary to comply with specific requirements for energy codes, wind, seismic, snow or other special loading conditions. These plans must be used in conjunction with the Extension Service plans and all dimensions, notes and recommended details must be coordinated with the original set and verified in the field by the owner and contractor. For information on product manufacturers contact the Center for Accessible Housing.

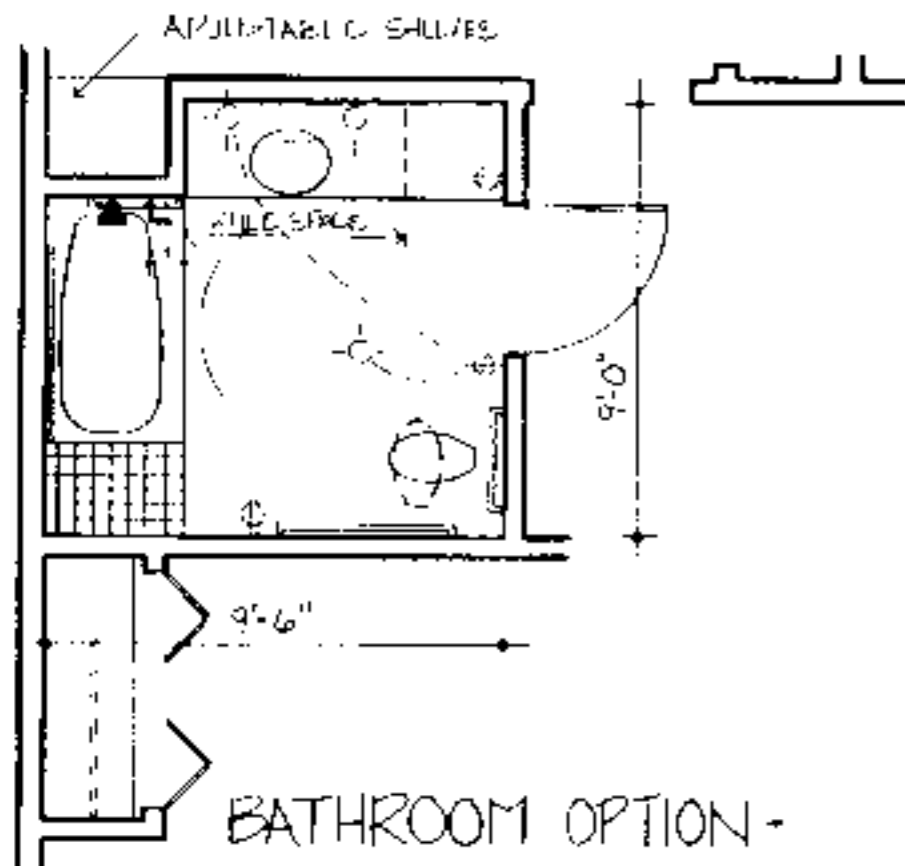
BUILDING DATA	
# Bedrooms	3
Square Footage: heated	1586
storage/corridor	136
porch	172
total	1722

PLAN DATA	
Adapted by:	C. Sanchez
Drawn by:	C. Humkey
Approved by:	R. Mace

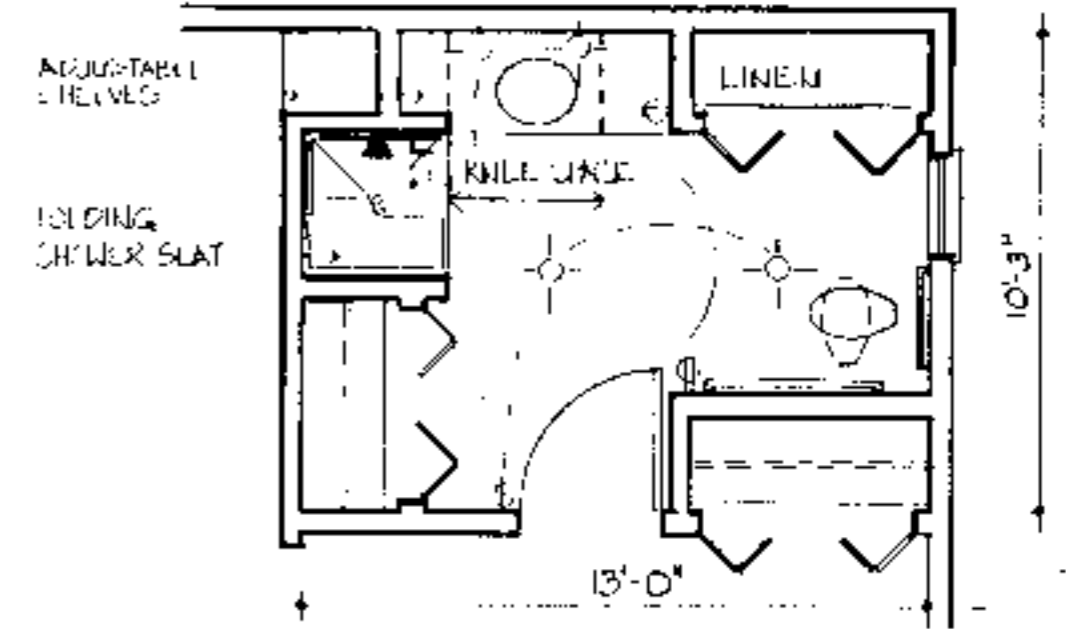
Center for Accessible Housing  
School of Design  
NCSU  
Box 8613  
Raleigh, NC 27695-8613  
919.515.3082 voice/TDD  
919.515.3023 fax

Accessible House Plan # 10A  
Adapted from NC Collection Plan # 10  
North Carolina Cooperative Extension Service  
NCSU Home Economics - Housing  
Box 7605  
Raleigh, NC 27695-7605  
US Department of Agriculture, Cooperating

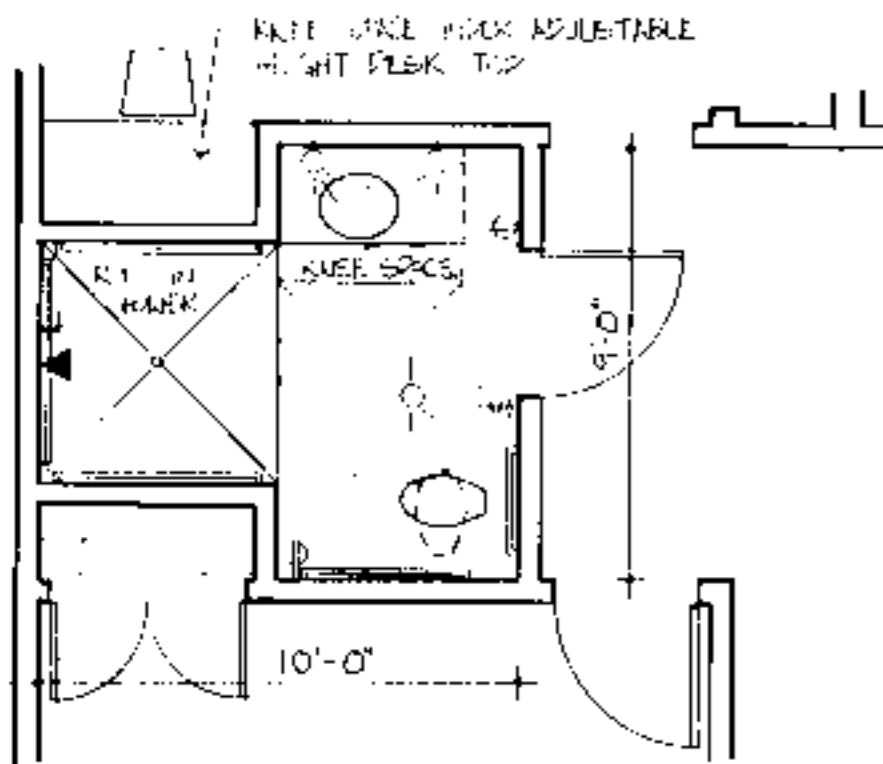
PLAN DATA	
Sheet	2 of 6
Date	May 93



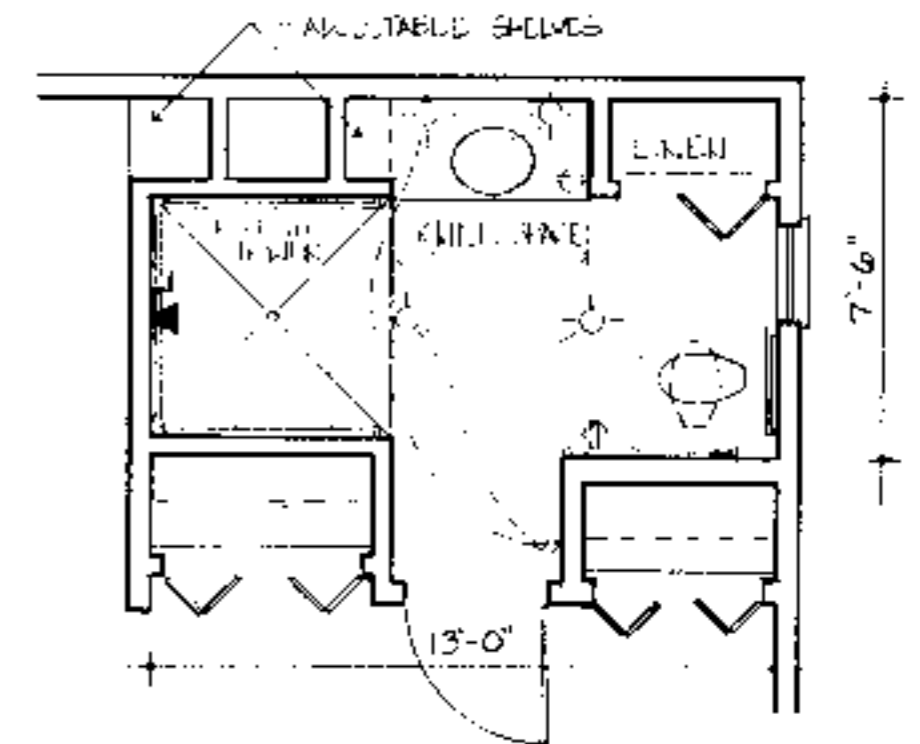
BATHROOM OPTION -  
BUILT IN TRANSFER SURFACE AT TUB  
4'-1'-0"



BATHROOM OPTION - 3'-3" TRANSFER SHOWER  
4'-1'-0"



BATHROOM OPTION - 5'-5" ROLL IN SHOWER  
4'-1'-0"



BATHROOM OPTION - 5'-5" ROLL IN SHOWER  
4'-1'-0"

House # 1

Door Schedule		Symbol	
Mark	Size	Description	No. Required
1	3'-0" x 6'-8"	exterior hardwood w/side light	1
2	3'-0" x 6'-8"	interior hardwood	5
3	3'-0" x 6'-8"	exterior hardwood	1
4	5'-0" x 6'-8"	interior bifold	2
5	4'-6" x 6'-8"	interior bifold	2
6	3'-6" x 6'-8"	interior bifold	1
7	3'-0" x 6'-8"	int. hardwood (closet)	1

Window Schedule		Symbol	
Mark	Size	Description	No. Required
A	9'-0" x 5'-2"	casement	2
B	6'-0" x 5'-2"	casement	1
C	3'-0" x 5'-2"	casement	3
D	4'-0" x 3'-2"	casement	1
E	3'-0" x 6'-0"	fixed glass	1
F	2'-0" x 3'-2"	casement	1

**DISCLAIMER** These plans are supplements to plans offered by the NC Cooperative Extension Service. They are intended to improve access for people with mobility impairments and are provided for information purposes only. It is the responsibility of the contractor and owner to comply with all applicable federal, state and local codes, ordinances and regulations in the construction of the house. Modifications to these plans will be needed to meet special individual needs of people with disabilities and may also be necessary to comply with specific requirements for energy codes, wind, seismic, snow or other special loading conditions. This set must be used in conjunction with the Extension Service plans and dimensions notes and recommended details. Must be coordinated with the original set and verified in the field by the owner and contractor. For information on product manufacturers contact the Center for Accessible Housing.

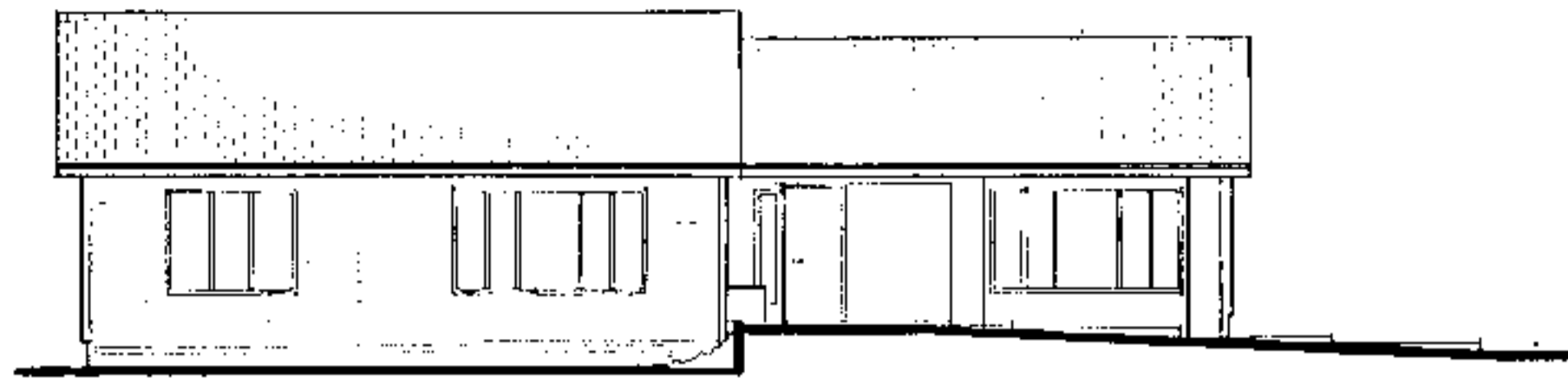
BUILDING DATA	
# Bedrooms	3
Square Footage: heated	1586
storage/corridor	136
porch	172
total	1722

**PLAN DATA**  
Adapted by: C. Sanchez  
Drawn by: C. Humby  
Approved by: R. Mace

Center for Accessible Housing  
School of Design  
NCSU  
Box 8613  
Raleigh, NC 27695-8613  
919.515.3082 voice/TDD  
919.515.3023 fax

Accessible House Plan # 102  
Adapted from NC Collection Plan # 10  
North Carolina Cooperative Extension Service  
NCSU Home Economics - Housing  
Box 7605  
Raleigh, NC 27695-7605  
US Department of Agriculture, Cooperating

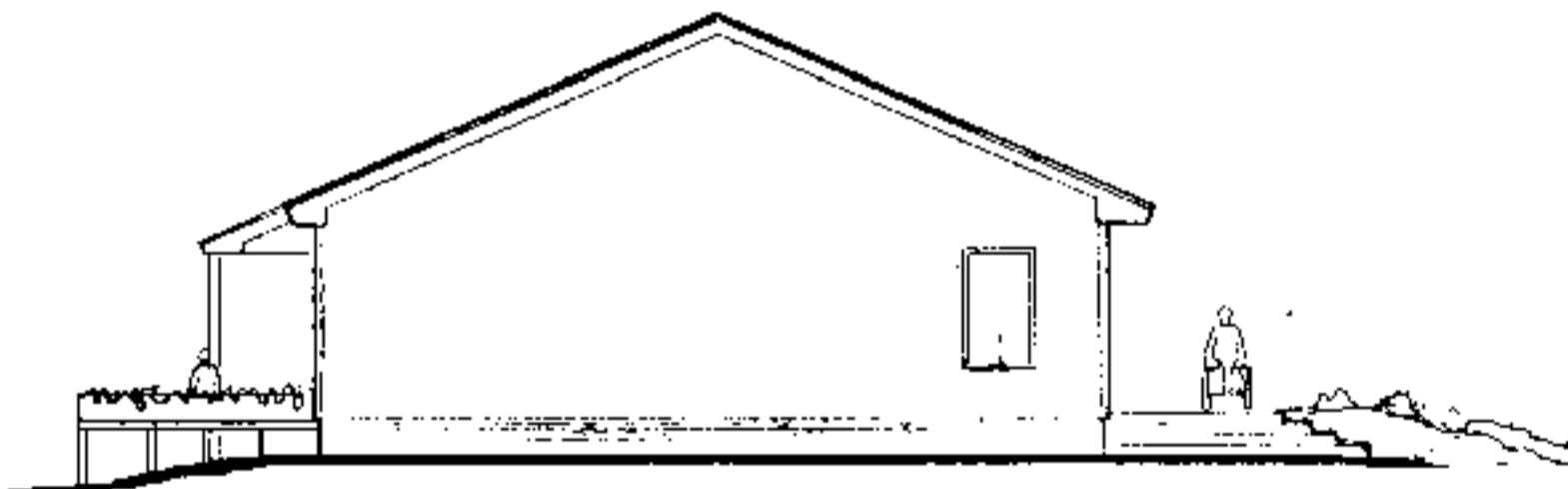
**PLAN DATA**  
Sheet 3 of 6  
Date May 93



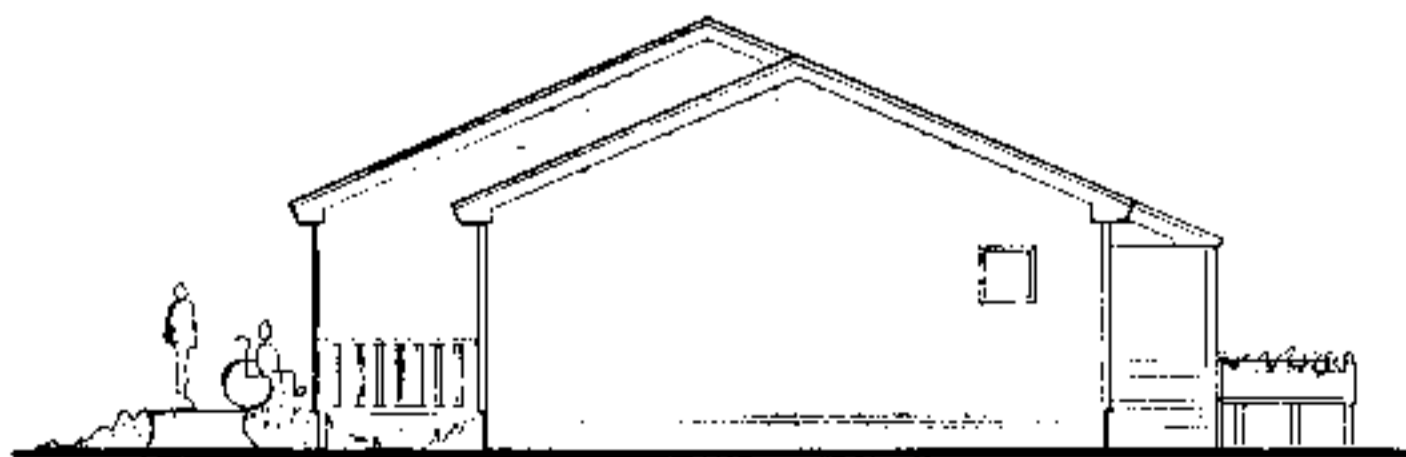
FRONT ELEVATION  
1/8" = 1'-0"



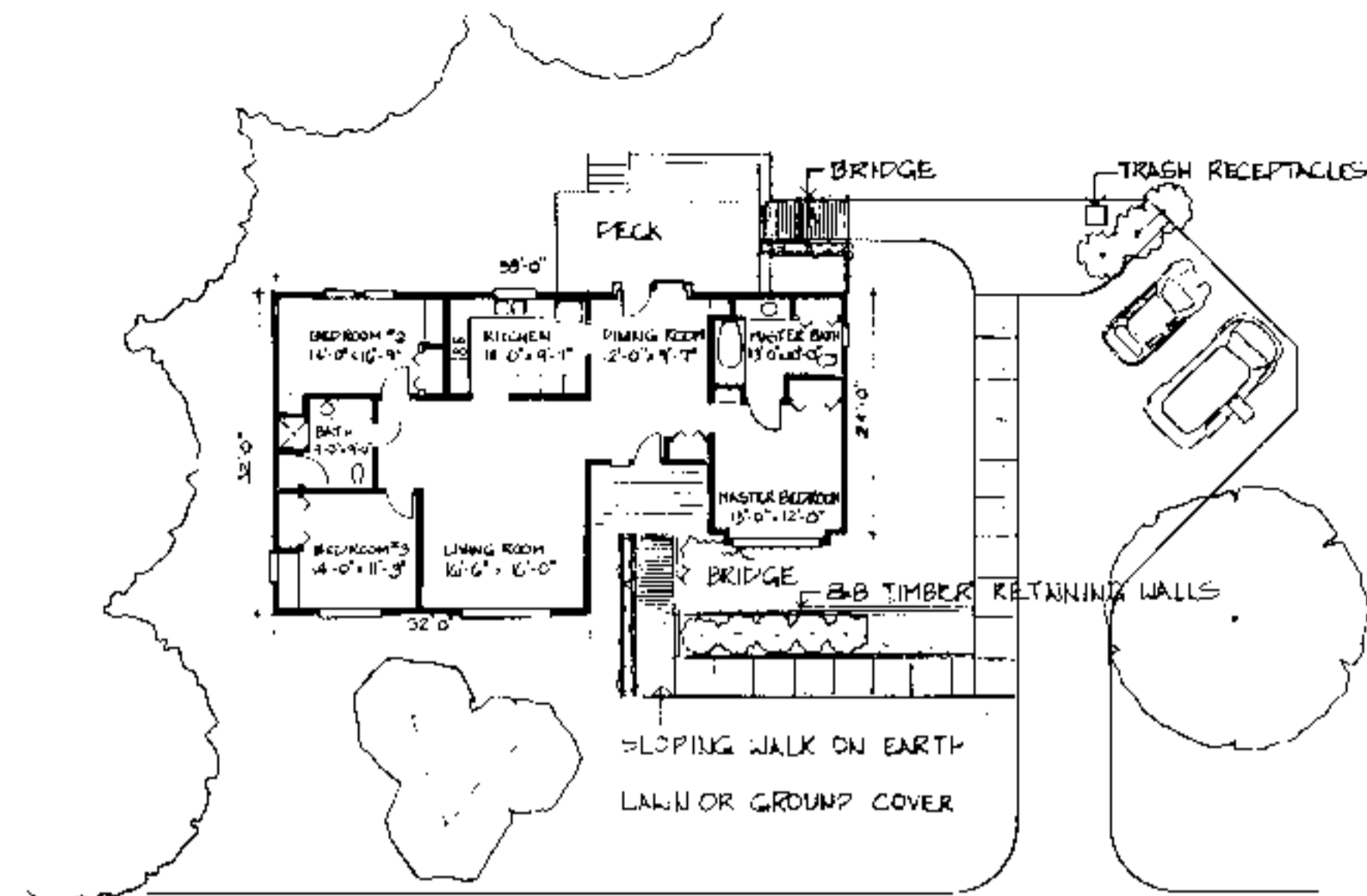
REAR ELEVATION  
1/8" = 1'-0"



LEFT SIDE ELEVATION  
1/8" = 1'-0"



RIGHT SIDE ELEVATION  
1/8" = 1'-0"



SITE PLAN  
1" = 15'-0"

Site Plan Notes

- When siting house and designing exterior walkways, consider topography, existing vegetation, solar orientation, and drainage.
- Eliminate the need for a ramp or limit its length and slope by placing the foundation as close to the ground as possible.
- Create attractive accessible entrances utilizing earthwork and site grading. Short wood framed bridges spanning from the elevated floor of the house to an uphill site location eliminate the need for special drainage, waterproofing and ventilation measures. On flatter sites, the bridge solution is possible by building an earth berm and retaining wall with a sloped walk.
- Locate walkways to provide convenient access to the parking area, house entrances, outside siting area, mail/newspaper delivery area, and trash/recycling receptacles. Provide 1/2 inch raised edge on the side of walkways to prevent stroller or wheelchairs from rolling off accidentally.
- Create attractive enclosure for trash/recycling containers, that would also prevent them from blowing over or being disturbed by animals.
- Provide raised beds for gardening, an outside entertaining area and a recreational/play area. Locate raised beds/vegetable/flower near walkways, entrances and seating areas to maximize enjoyment, while facilitating ease of maintenance.
- When designing outside features, such as ramps, railings, or raised beds, use similar architectural details, colors, and building materials as in the (exterior) residence.
- Consider minimizing lawn space, or replacing it entirely with ground cover or mulch to reduce maintenance.
- Select plants which are appropriate for the soil and climate, such as indigenous species, to reduce maintenance. Include a variety of species of ground cover, and size and species of shrubbery to improve the ecological balance and wild life habitat.
- Choose plants which will mature at the desired height and provide year-round interest in views both outside and from within the house.
- Use multisense plants (those with interesting color, textures, fragrance, or edible part) and plants which attract birds and butterflies to maximize landscape enjoyment without increasing maintenance.

**DISCLAIMER** These plans are supplements to plans offered by the NC Cooperative Extension Service. They are intended to improve access for people with mobility impairments and are provided for information purposes only. It is the responsibility of the contractor and owner to comply with all applicable federal, state and local codes, ordinances and regulations in the construction of the house. Modifications to these plans will be needed to meet special individual needs of people with disabilities and may also be necessary to comply with specific requirements for energy codes, wind, seismic, snow or other special loading conditions. The set must be used in conjunction with the Extension Service plans and all dimensions, notes and recommended details must be coordinated with the original set and verified in the field by the owner and contractor. For information on product manufacturers contact the Center for Accessible Housing.

BUILDING DATA	
# Bedrooms	3
Square Footage: heated	1586
storage/corport	-
porch	136
total	1722

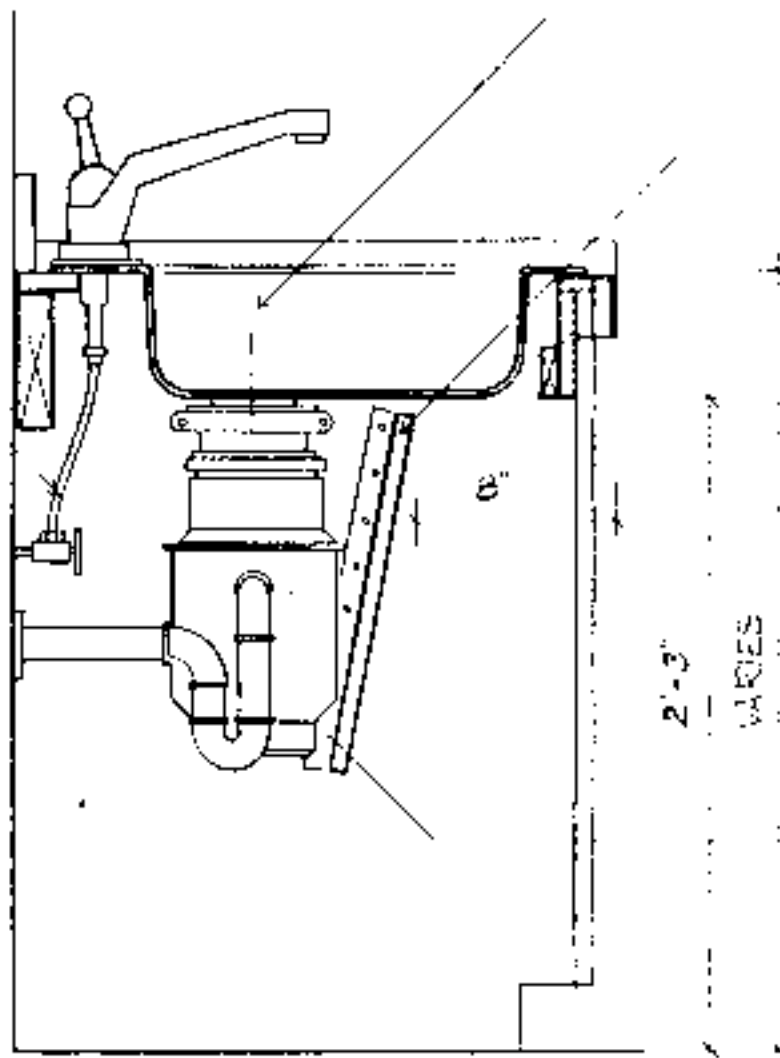
**PLAN DATA**  
Adapted by: C. Sanchez  
Drawn by: C. Humkey  
Approved by: R. Mace

Center for Accessible Housing  
School of Design  
NCSU  
Box 8613  
Raleigh, NC 27695-8613  
919.515.3082 voice/TDD  
919.515.3022 fax

Accessible House Plan # 10A  
Adapted from NC Collection Plan # 10  
North Carolina Cooperative Extension Service  
NCSU Home Economics - Housing  
Box 7605  
Raleigh, NC 27695-7605  
US Department of Agriculture, Cooperating

**PLAN DATA**  
Sheet 4 of 6  
Date May 93

FLEXIBLE SUPPLY PIPES



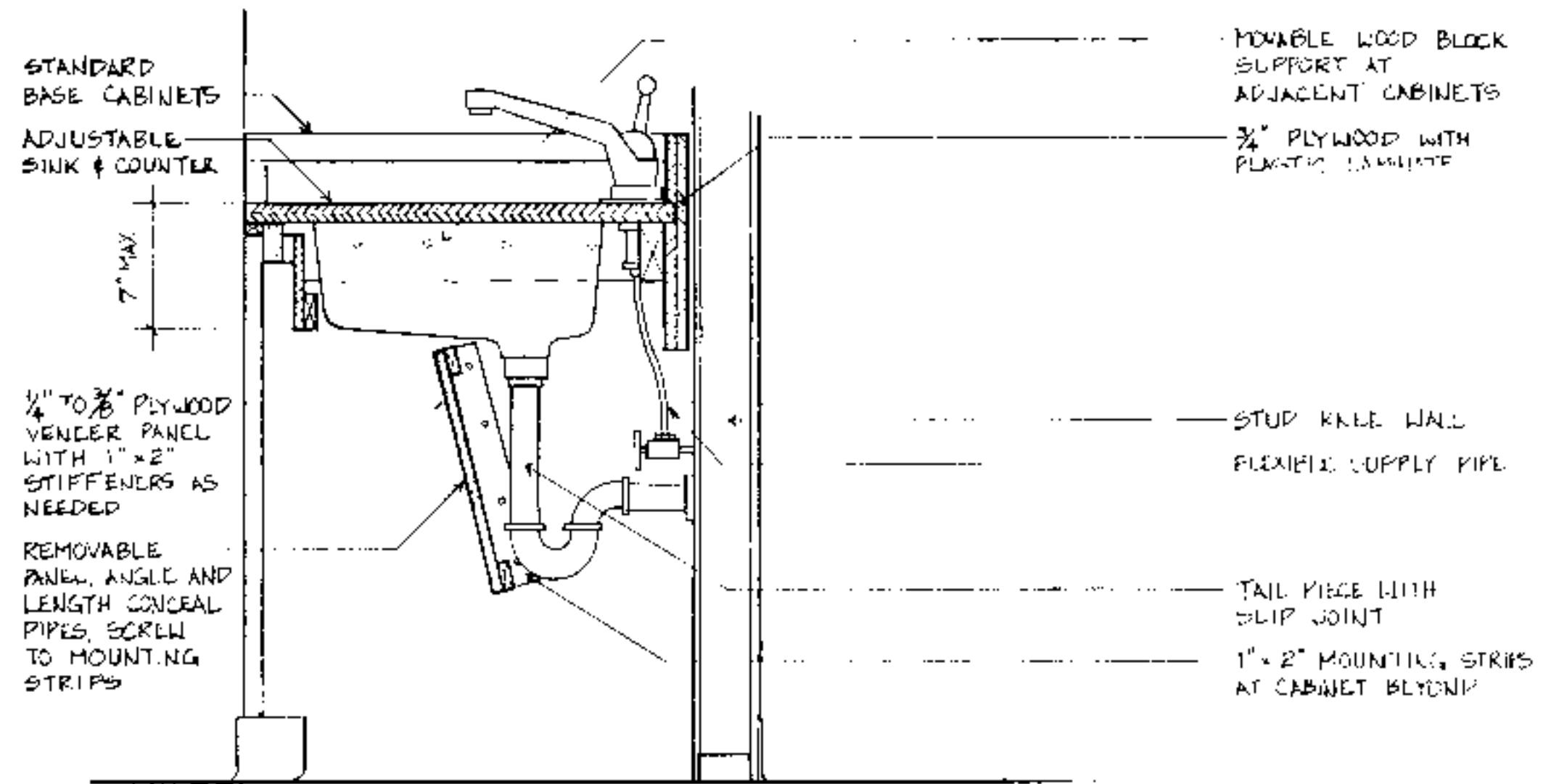
MOEN SINK E-2522 4 HL/HR

PIPE PROTECTION PANEL  
1/4" TO 3/8" PLYWOOD  
VENEER PANEL

1" x 2" MOUNTING STRIPS  
AT CABINET BEYOND

TYPICAL SECTION AT GARBAGE DISPOSAL ENCLOSURE

1/2" = 1'-0"



1/4" TO 3/8" PLYWOOD  
VENEER PANEL  
WITH 1" x 2"  
STIFFENERS AS  
NEEDED

REMOVABLE  
PANEL, ANGLE AND  
LENGTH CONICAL  
PIPES, SCREW  
TO MOUNTING  
STRIPS

MOVABLE WOOD BLOCK  
SUPPORT AT  
ADJACENT CABINETS

3/4" PLYWOOD WITH  
PLASTIC LAMINATE

STUD KNEE WALL  
FLEXIBLE SUPPLY PIPE

TAIL PIECE WITH  
SLIP JOINT

1" x 2" MOUNTING STRIPS  
AT CABINET BEYOND

TYPICAL ADJUSTABLE SINK & COUNTER DETAIL

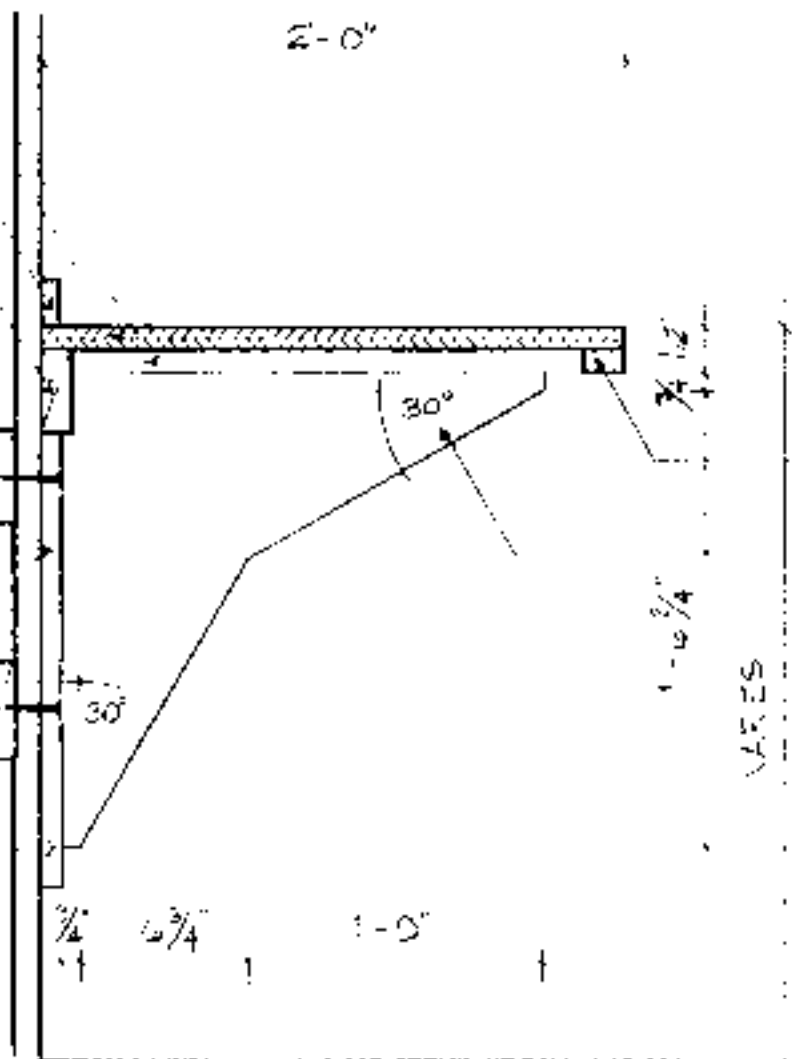
1/2" = 1'-0"

1x4" FLANGE  
3/4" PLYWOOD WITH  
PLASTIC LAMINATE  
1" x 2" BACKSPLASH  
2x4"

SOLID WOOD  
STRUCTURAL BRACKET  
BETWEEN STUDS, IN  
BRACKETS AS NECESSARY

BRACKET FLANGE  
SCREWED NAILED OR  
BOLTED TO BLOCK OR  
STUDS AS NECESSARY  
TO SUPPORT ALL LOADS

1x4" SOLID WOOD  
FLANGE ROUTED  
LET IN GLEED AND  
NAILED TO PLYWOOD

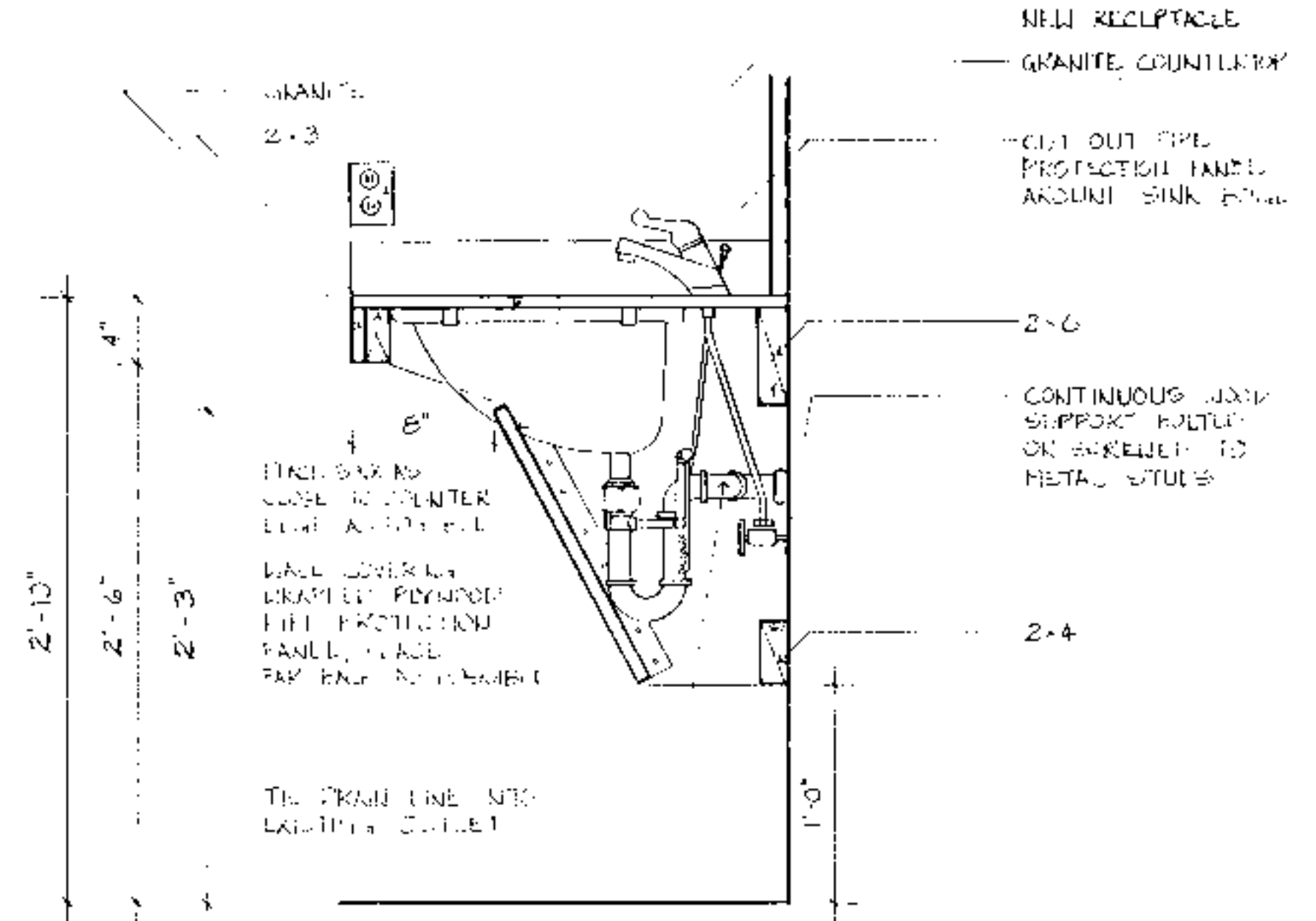


1" x 2"

3/8" BIRCH VENEER PLYWOOD  
WITH 1/4" x 3/4" SOLID WOOD  
EDGE BAN LET-IN GLEED  
AND NAILED

TYPICAL SECTION - COUNTER SUPPORT BRACKET

1/2" = 1'-0"



TYPICAL SECTION THROUGH BATHROOM COUNTER AND SINK

1/2" = 1'-0"

**DISCLAIMER** These plans are supplements to plans offered by the NC Cooperative Extension Service. They are intended to improve access for people with mobility impairments and are provided for information purposes only. It is the responsibility of the contractor and owner to comply with all applicable federal, state and local codes, ordinances and regulations in the construction of the house. Modifications to these plans will be needed to meet special individual needs of people with disabilities and may also be necessary to comply with specific requirements for energy codes, wind, seismic, snow or other special loading conditions. This set must be used in conjunction with the Extension Service plans and dimensions notes and recommended details. Must be coordinated with the original set and verified in the field by the owner and contractor. For information on product manufacturers contact the Center for Accessible Housing.

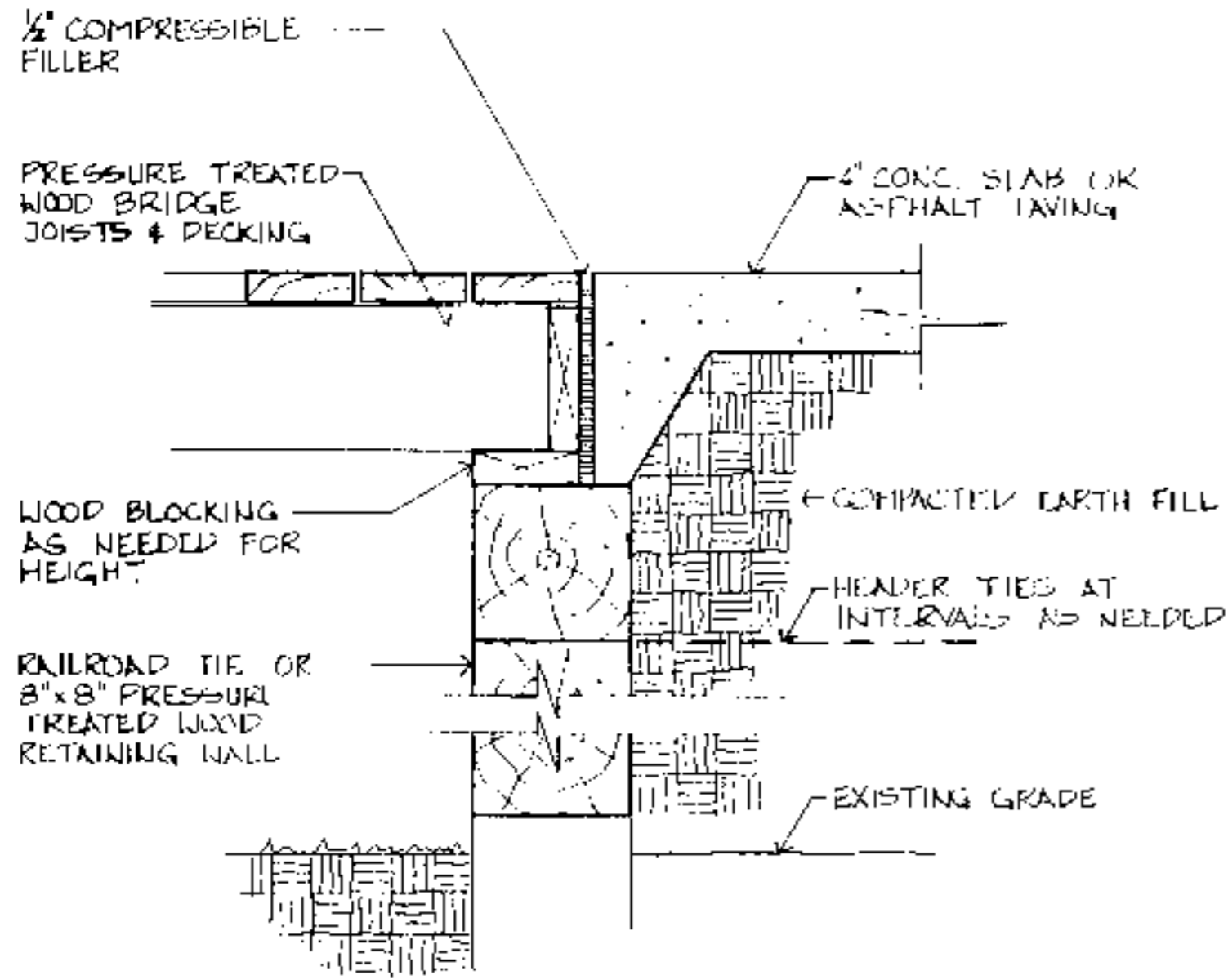
BUILDING DATA	
# Bedrooms	_____
Square Footage: heated	_____
storage/corridor	_____
porch	_____
total	_____

PLAN DATA	
Adapted by:	C. Sanchez
Drawn by:	C. Humkey
Approved by:	R. Moore

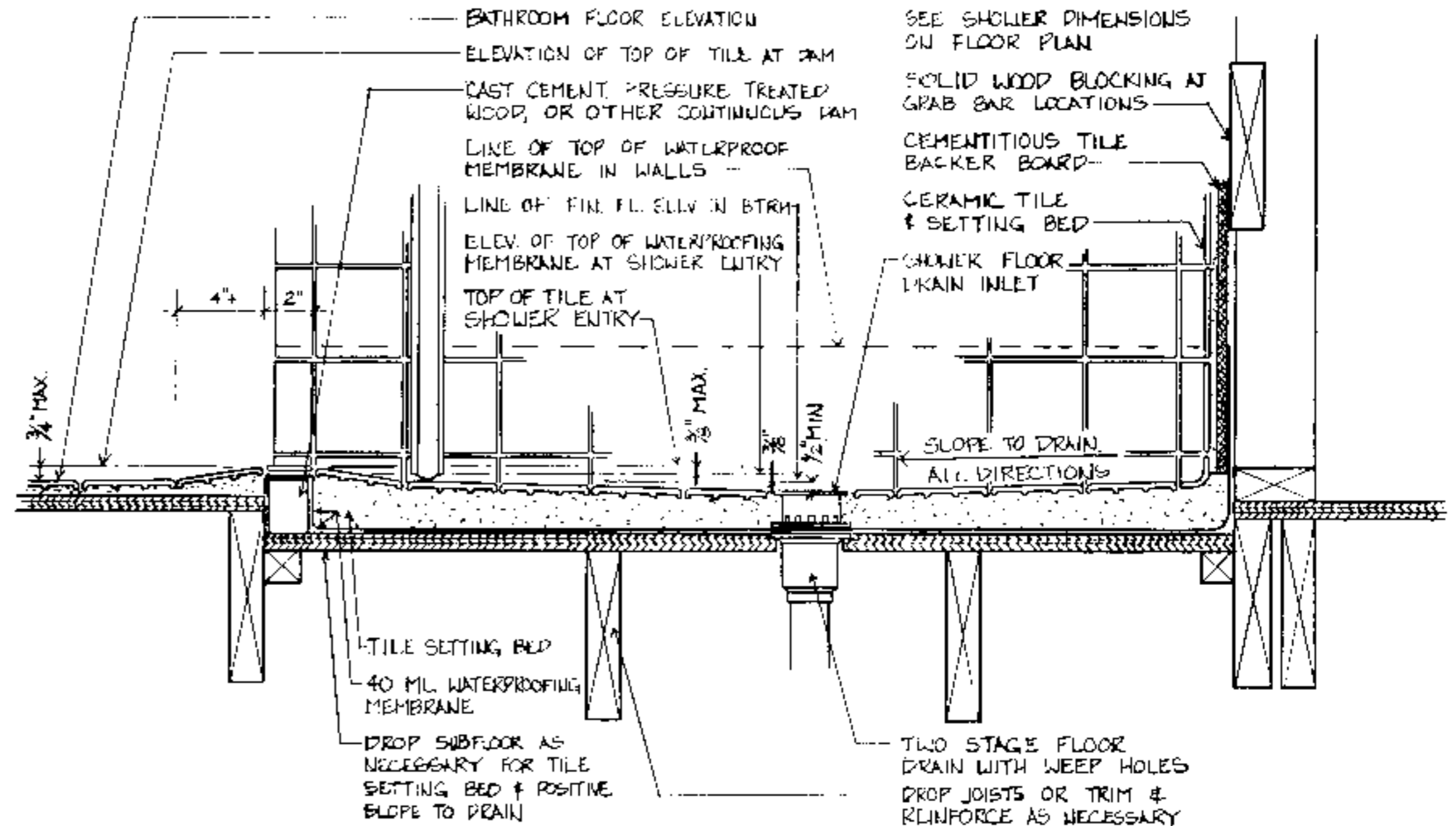
Center for Accessible Housing  
School of Design  
NCSU  
Box 2613  
Raleigh, NC 27695-8613  
919.515.3082 voice/TDD  
919.515.3023 fax

Accessible House Plan # \_\_\_\_\_  
Adapted from NC Collection Plan # \_\_\_\_\_  
North Carolina Cooperative Extension Service  
NCSU Home Economics - Housing  
Box 7605  
Raleigh, NC 27695-7605  
US Department of Agriculture, Cooperating

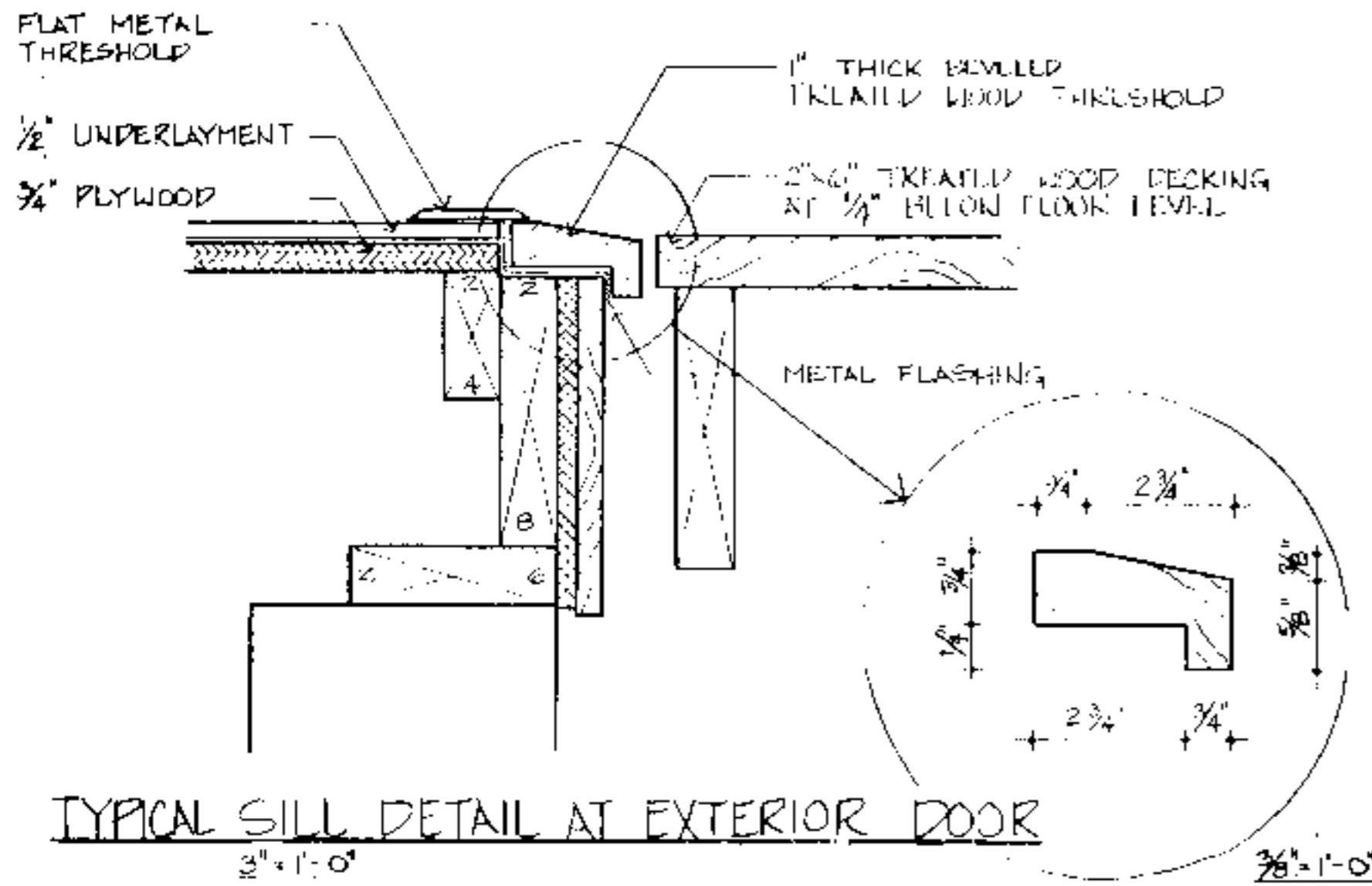
PLAN DATA  
Sheet 5 of 6  
Date May 93



**TYPICAL BRIDGE END DETAIL**  
 $\frac{1}{2}" = 1'-0"$



**TYPICAL ROLL-IN SHOWER FLOOR & DRAIN DETAIL AT WOOD FRAME CONSTRUCTION**  
 $3" = 1'-0"$



**TYPICAL SILL DETAIL AT EXTERIOR DOOR**  
 $3" = 1'-0"$

**DISCLAIMER**  
 These plans are supplements to plans offered by the NC Cooperative Extension Service. They are intended to improve access for people with mobility impairments and are provided for information purposes only. It is the responsibility of the contractor and owner to comply with all applicable federal, state and local codes, ordinances and regulations in the construction of the house. Modifications to these plans will be needed to meet special individual needs of people with disabilities and may also be necessary to comply with specific requirements for energy codes, wind, seismic, snow or other special loading conditions. This set must be used in conjunction with the Extension Service plans and all dimensions notes and recommended details must be coordinated with the original set and verified in the field by the owner and contractor. For information on product manufacturers contact the Center for Accessible Housing.

BUILDING DATA	
# Bedrooms	_____
Square Footage: heated	_____
storage/porch	_____
total	_____

**PLAN DATA**  
 Adapted by: C. Sanchez  
 Drawn by: C. Humkey  
 Approved by: R. Mace

Center for Accessible Housing  
 School of Design  
 NCSU  
 Box 8613  
 Raleigh, NC 27695-8613  
 919.515.3082 voice/TDD  
 919.515.3023 fax

Accessible House Plan # \_\_\_\_\_  
 Adapted from NC Collection Plan # \_\_\_\_\_  
 North Carolina Cooperative Extension Service  
 NCSU Home Economics - Housing  
 Box 7605  
 Raleigh, NC 27695-7605  
 US Department of Agriculture, Cooperating

PLAN DATA  
 Sheet 6 of 6  
 Date May 93