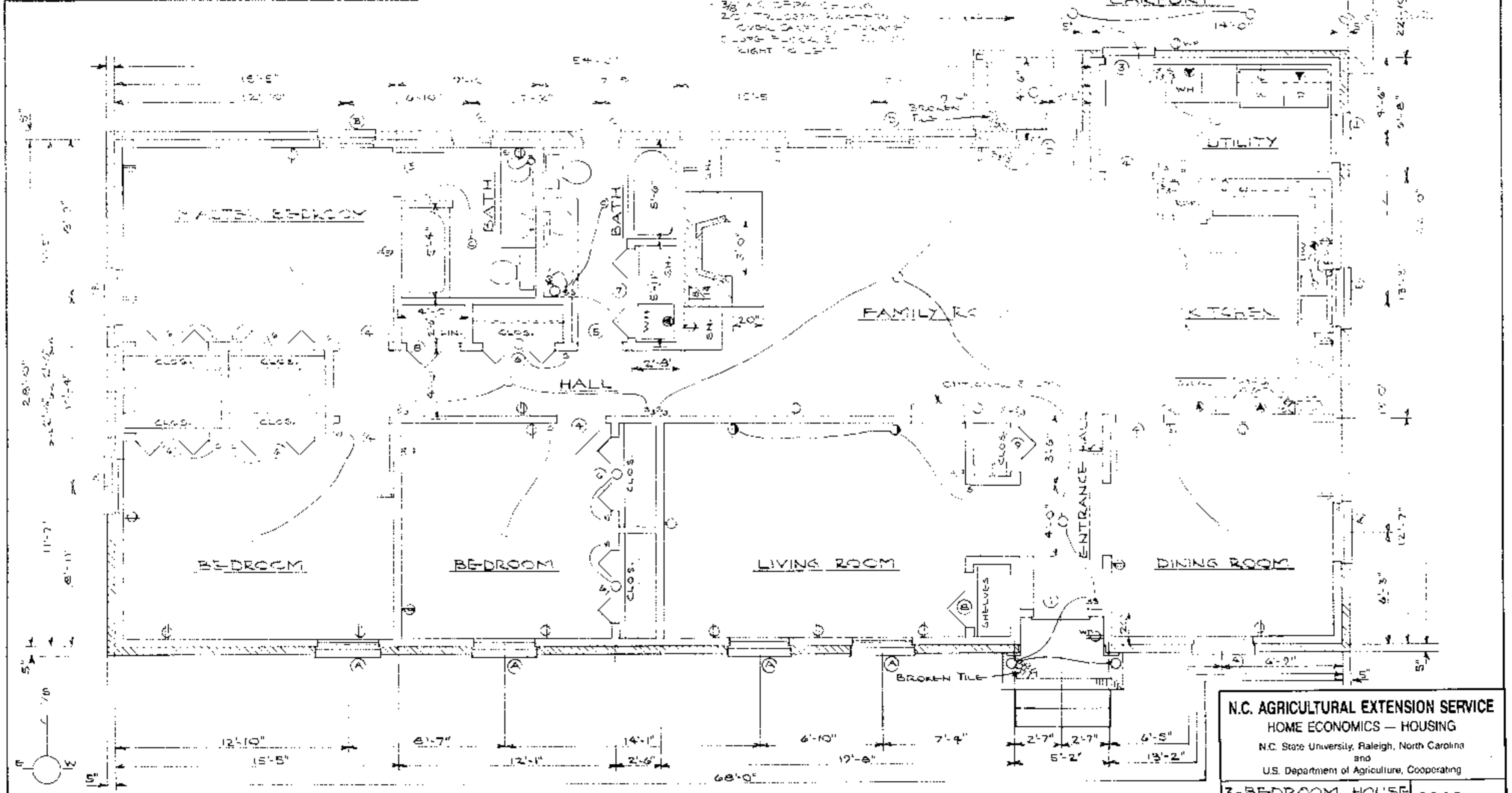


DOOR SCHEDULE			
MARK	SIZE	DESCRIPTION	NO. REQ'D
1	32x68	1 1/2" EXT. 6-PANEL COLONIAL	1
2	32x68	" " COLONIAL, 1/2 GLASS	2
3	28x68	" " " " " "	1
4	28x68	1 3/8" INT. 6-PANEL COLONIAL	5
5	28x68	" " " " " "	2
6	48x68	1 3/8" COLONIAL PANEL, 3 ROLLS	7
7	58x68	" " " " " "	1
8	32x68	" " " " " "	2
9	28x68	" " " " " "	1

WINDOW SCHEDULE			
MARK	SIZE	DESCRIPTION	NO. REQ'D
A	32x48	DOUBLE HUNG, WOOD	6
B	32x42	" " " "	3
C	28x32	" " " "	2
D	3-3 1/2 x 42	" " " "	1
E	34 x 32	" " " "	1
F	28 x 32	" " " "	2
G	32 x 32	" " " "	2

ALL WINDOWS SHALL BE AWMF CONSTRUCTION WITH DOUBLE GLAZING & ENERGY SASH.

4" CONC. SLAB FLOOR  
 3/8" AC DPM FLOWED G.C.  
 20' TELESCOPE PARTIAL  
 COVER SASHING - 1/2" GLASS  
 4" CONC. SLAB FLOOR  
 3/8" AC DPM FLOWED G.C.



**FLOOR PLAN**  
 SCALE: 1/4" = 1'-0"

SUGGESTED ORIENTATION



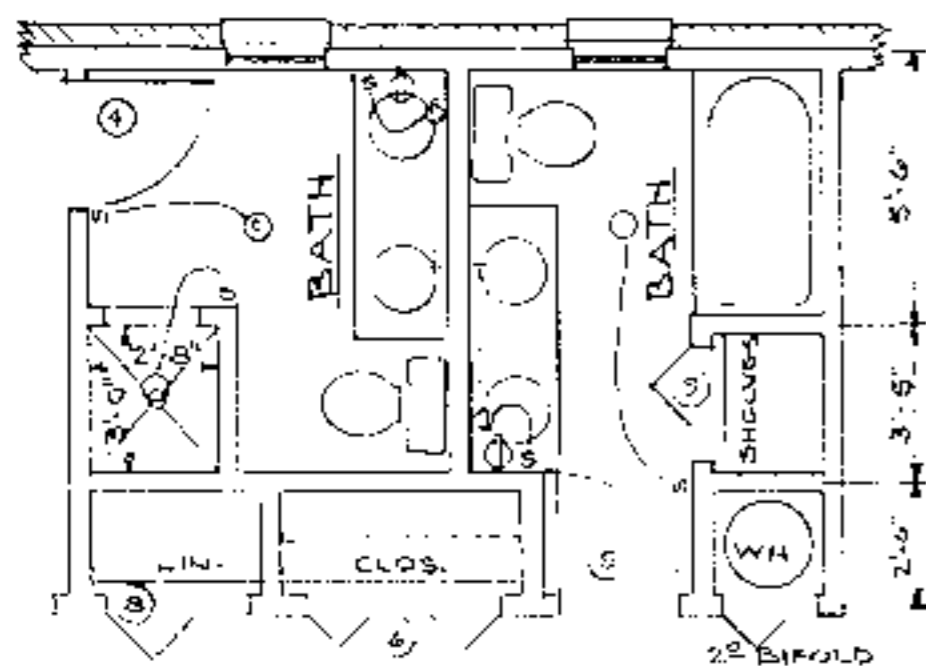
Helping people put knowledge to work.

**N.C. AGRICULTURAL EXTENSION SERVICE**  
 HOME ECONOMICS — HOUSING  
 N.C. State University, Raleigh, North Carolina  
 and  
 U.S. Department of Agriculture, Cooperating

**3-BEDROOM HOUSE w/ CARPORT**      2042 Sq. Ft. Htg.

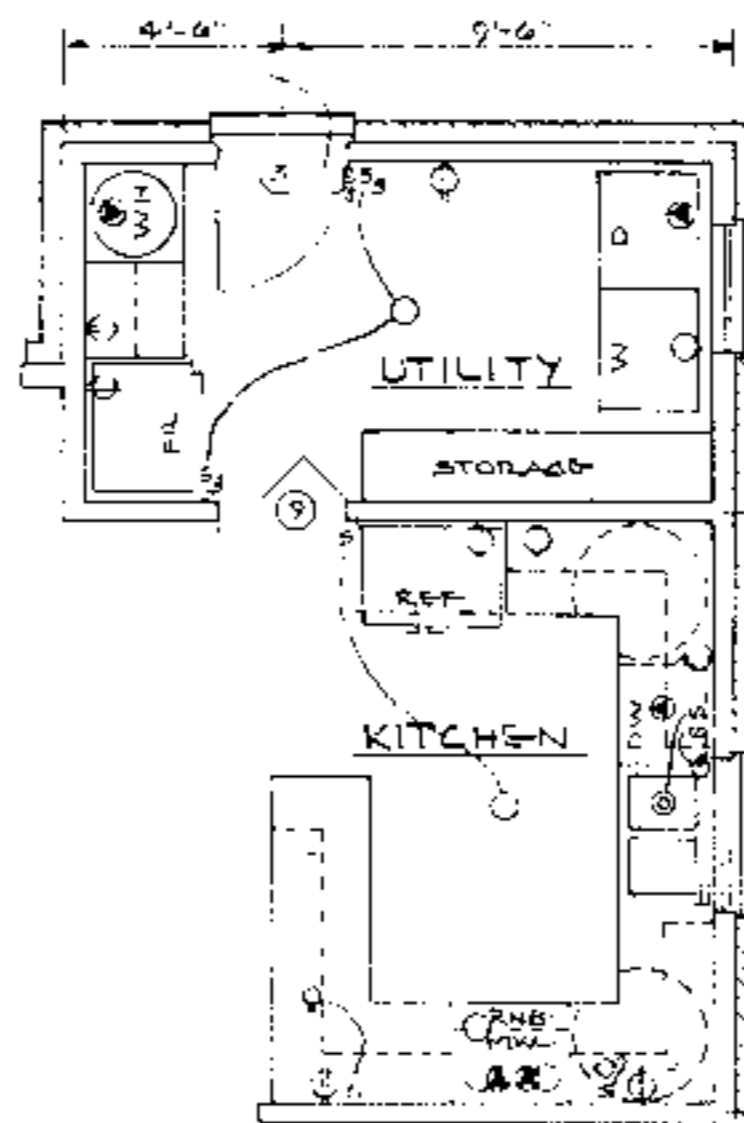
REV. OF 12-80      N.C. 7 '85      Sheet 1 of 3

NOTE: SEE BUILDING DATA SHEET 2



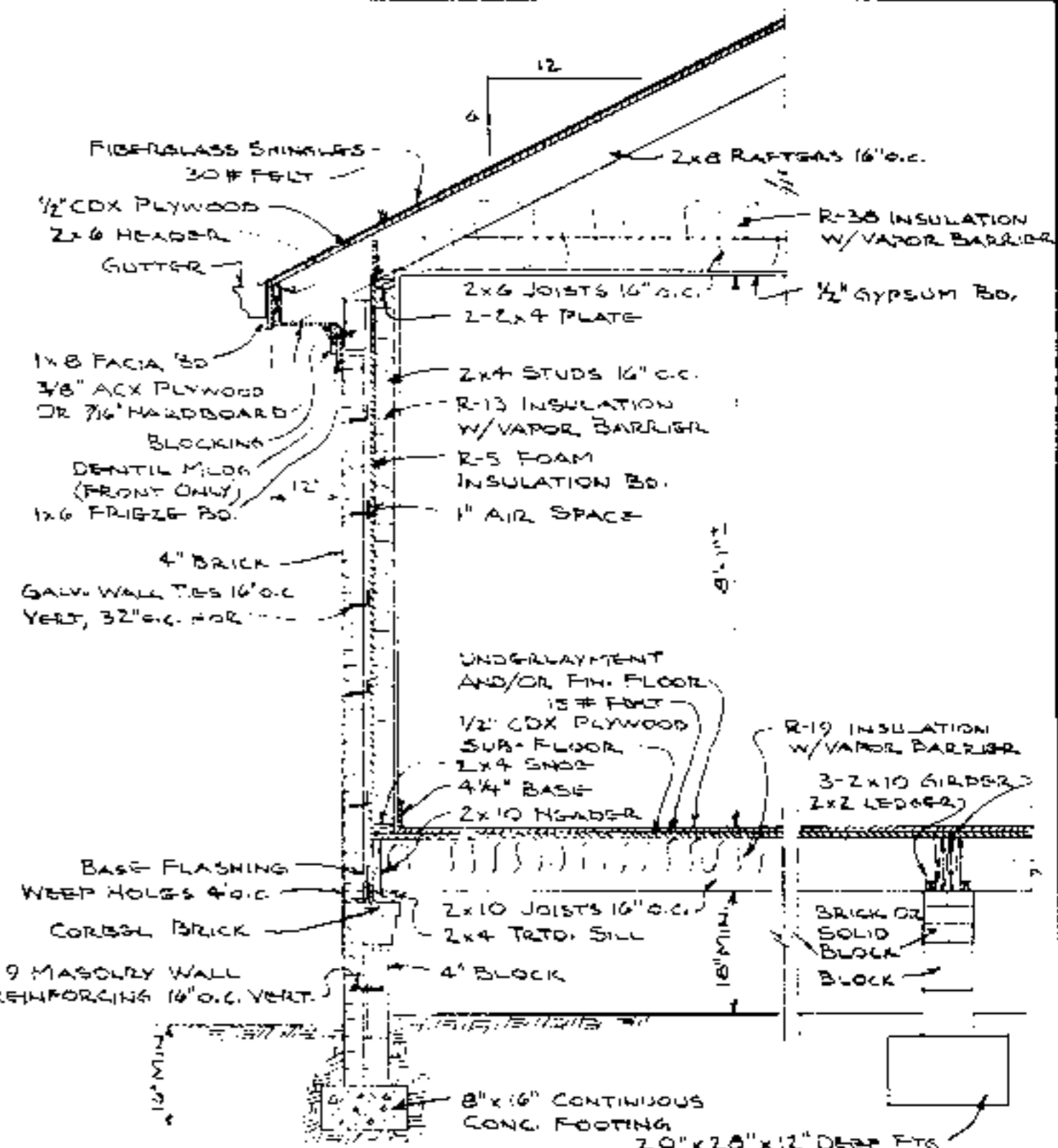
FLOOR PLAN OPTION-BATHS

SCALE: 1/4" = 1'-0"



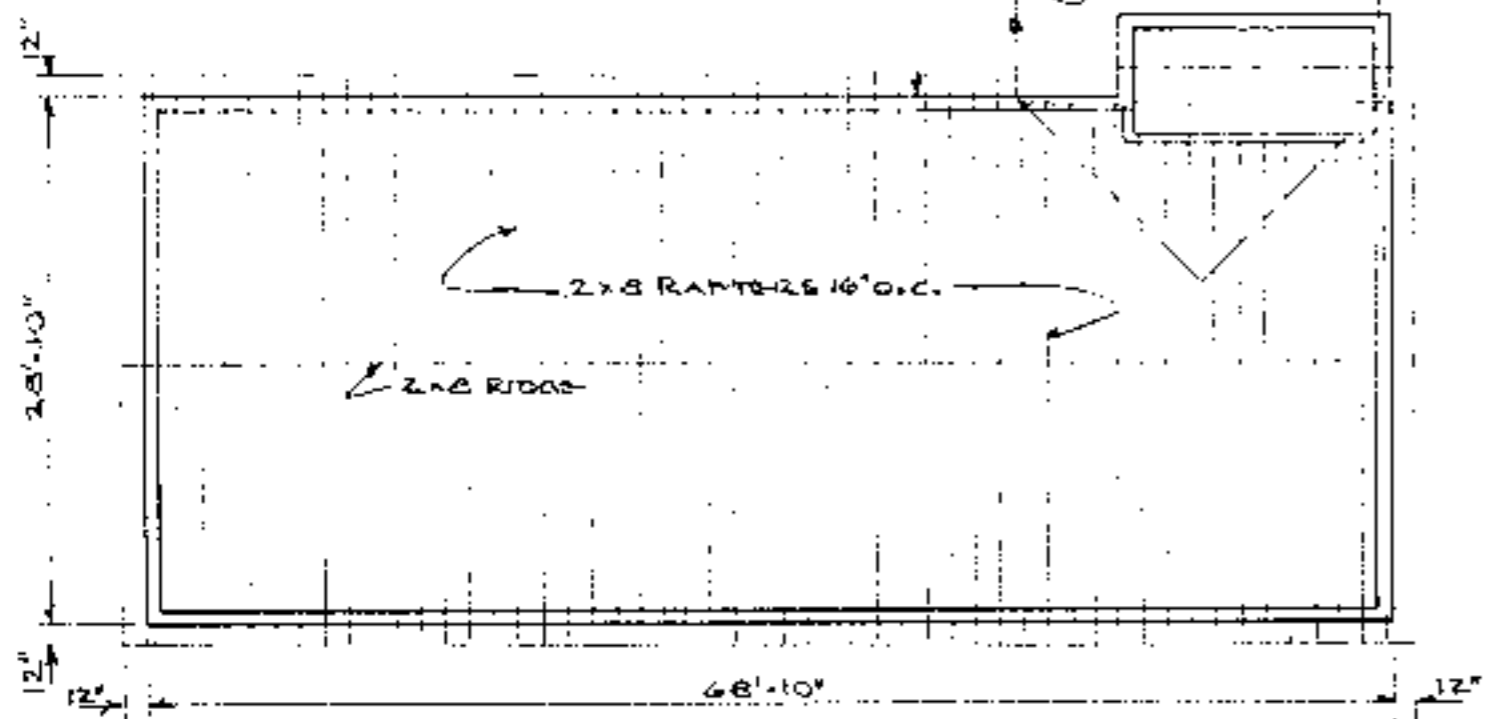
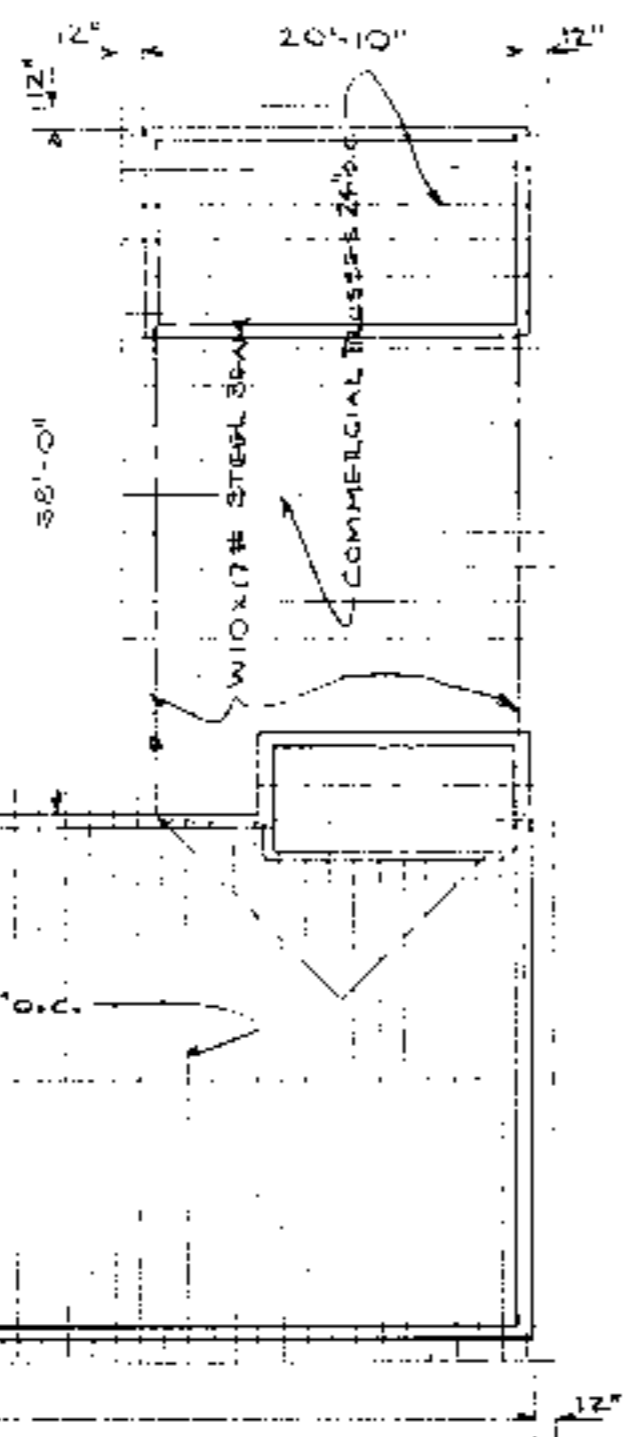
FLOOR PLAN OPTION-KITCHEN

SCALE: 1/4" = 1'-0"



TYPICAL WALL SECTION

SCALE: 1/2" = 1'-0"



ROOF FRAMING PLAN

NO SCALE

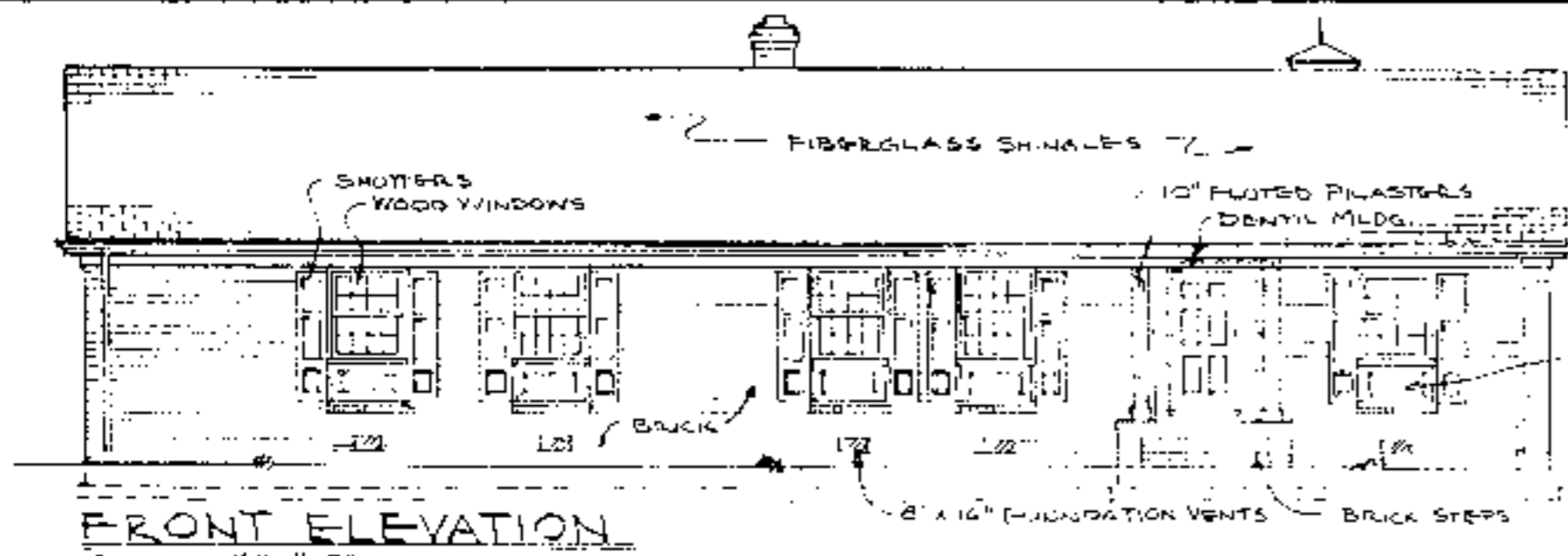


Helping people put knowledge to work

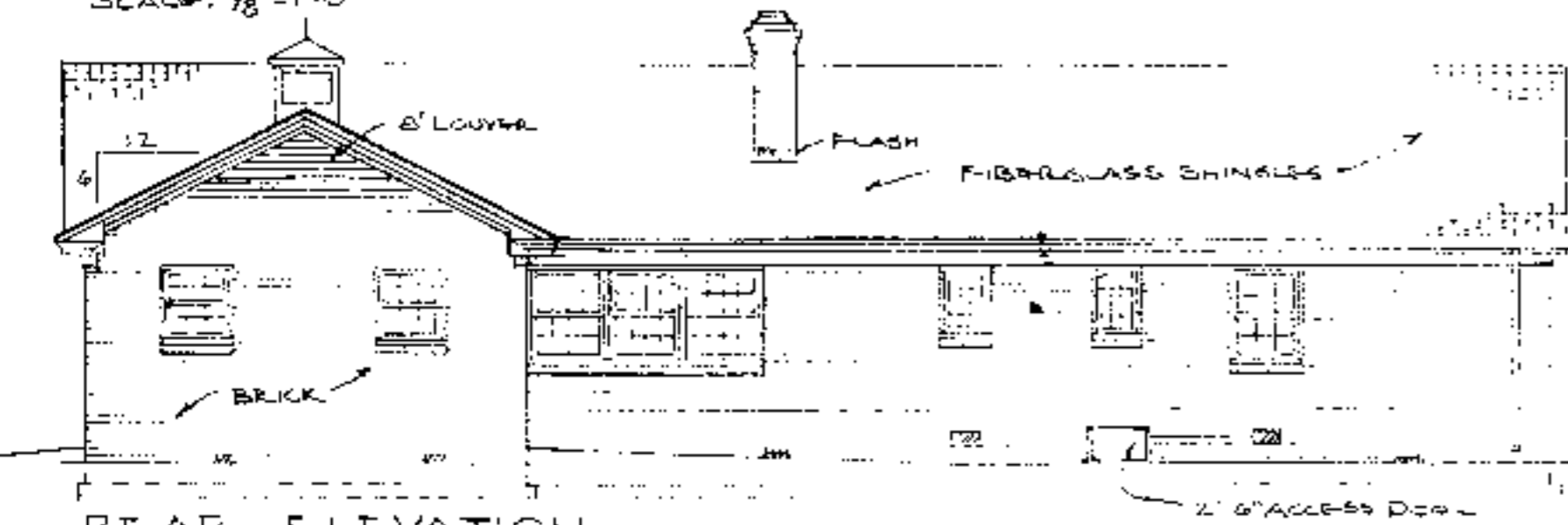
BUILDING DATA	
<b>SQUARE FOOTAGE:</b>	
HEATED:	2,042
CARPORT, STORAGE, PORCH	725
	2,767
<b>ESTIMATED HEATING LOAD:</b>	
29,800 BTU/HR @ 60°F D	
<b>ESTIMATED COOLING LOAD:</b>	
29,000 BTU/HR = 2 1/2 TONS ±	

ELECTRICAL SYMBOLS	
SYMBOL	DESCRIPTION
S	SINGLE POLE SWITCH
S3	THREE-WAY SWITCH
⊕	DUPLEX OUTLET
⊕WP	WEATHERPROOF OUTLET
⊕	SPECIAL PURPOSE OUTLET
○	LIGHTING OUTLET
⊕	WALL BRACKET LIGHT
⊕	COMB. FAN, LIGHT, HEATER
⊕	FLUO. STRIP IN SOFFIT, COVE, CABINET

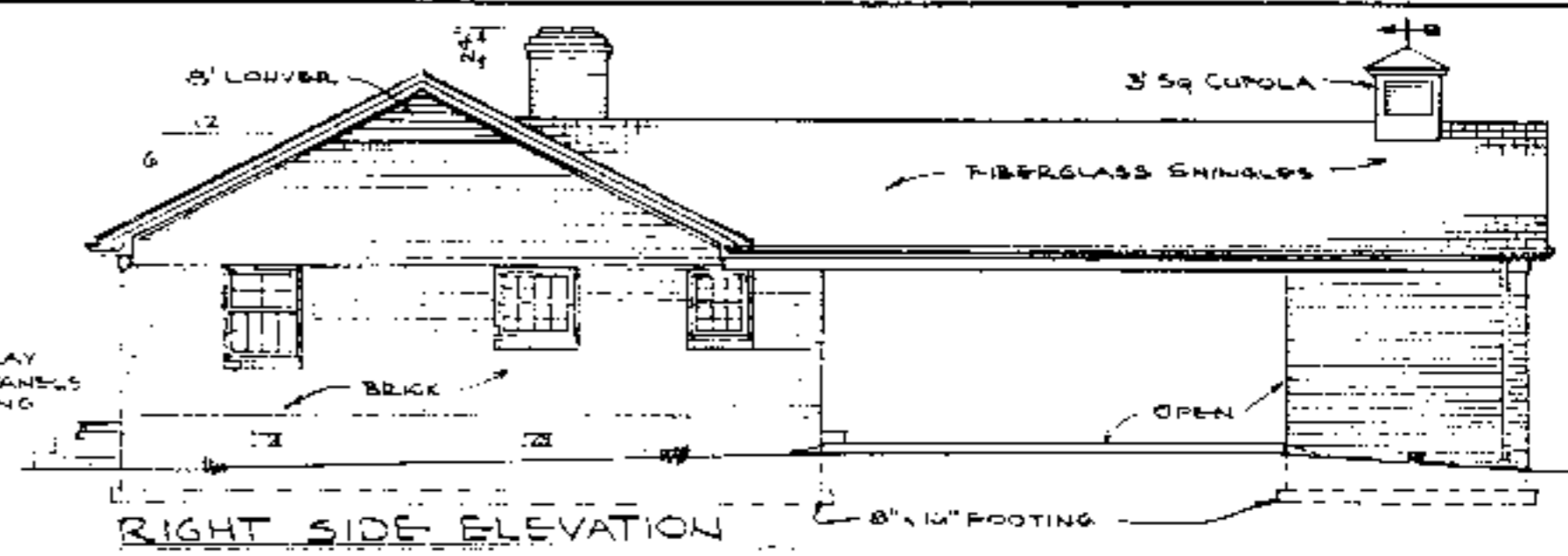
N.C. AGRICULTURAL EXTENSION SERVICE	
HOME ECONOMICS - HOUSING	
N.C. State University, Raleigh, North Carolina and U.S. Department of Agriculture, Cooperating	
<b>3-BEDROOM HOUSE</b> <b>W/CARPORT</b>	2,042 Sq. Ft. HTD.
REV. OF NC 80	N.C. 7 '88 Sheet 2 of 3



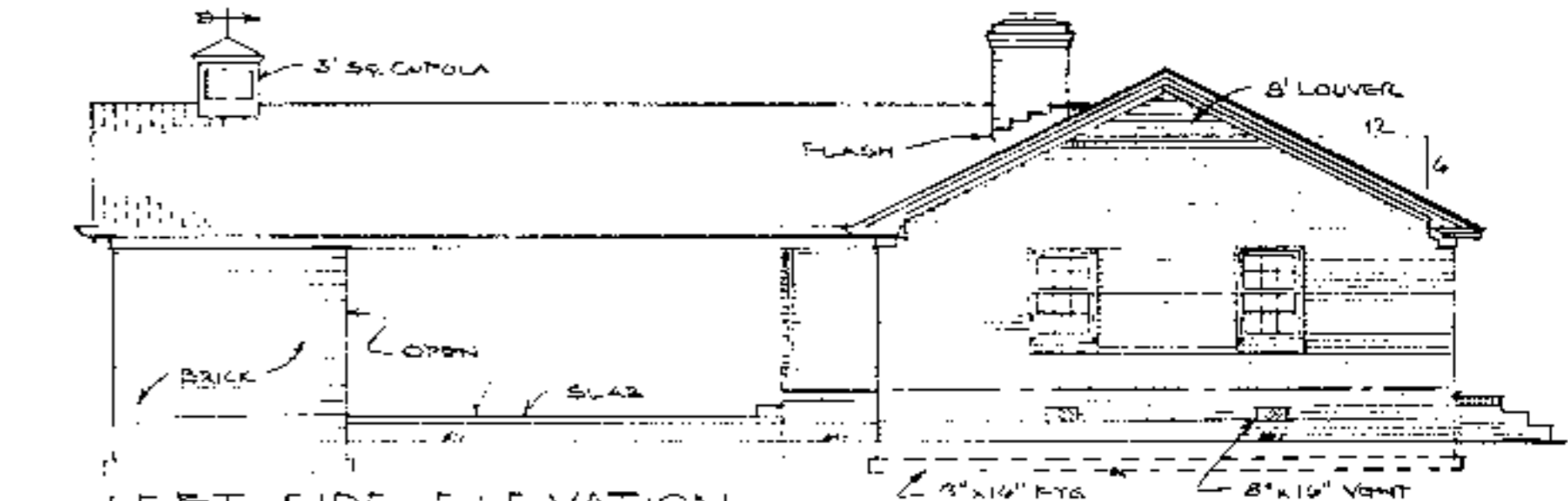
**FRONT ELEVATION**  
SCALE: 1/8" = 1'-0"



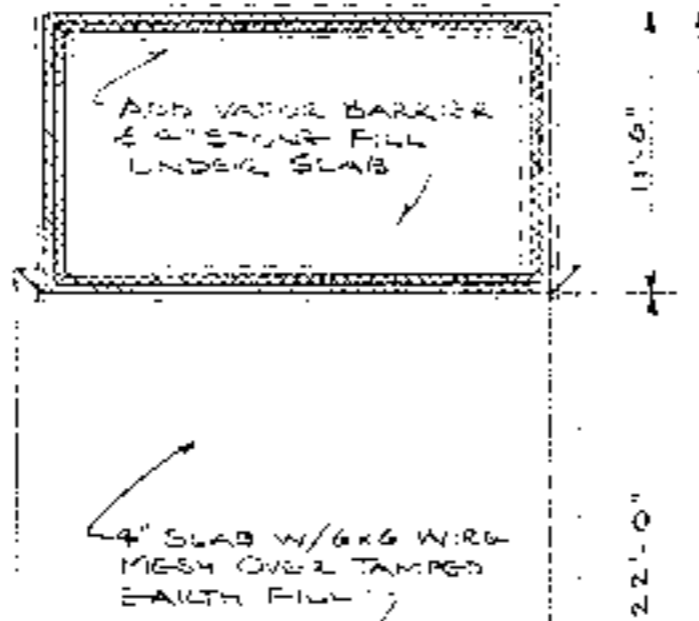
**REAR ELEVATION**  
SCALE: 1/8" = 1'-0"



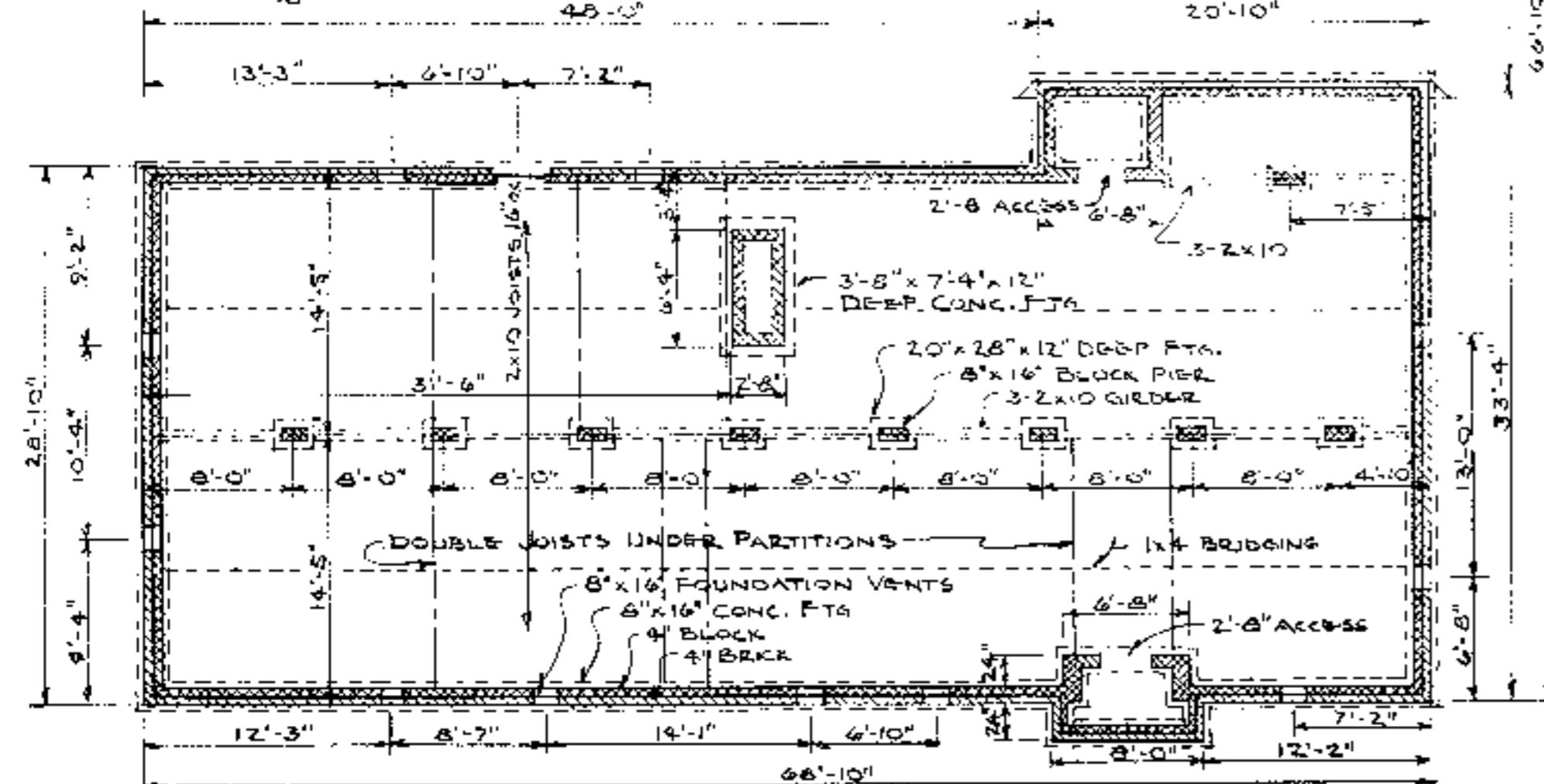
**RIGHT SIDE ELEVATION**



**LEFT SIDE ELEVATION**  
SCALE: 1/8" = 1'-0"



**FOUNDATION PLAN**  
SCALE: 1/8" = 1'-0"



**CONSTRUCTION CHECKLIST**

- 1- CONSULT LOCAL BUILDING CODES AND LENDING AGENCIES BEFORE BEGINNING CONSTRUCTION (RAFTERS SHOWN ARE FOR 30 PSF SNOW LOAD).
- 2- ACTUAL FOOTING SIZE & REINFORCING DEPEND ON LOCAL SOIL CONDITIONS.
- 3- ADEQUATELY NAIL & ANCHOR JOINTS.
- 4- SHEATH CORNERS WITH 1/2\"/>

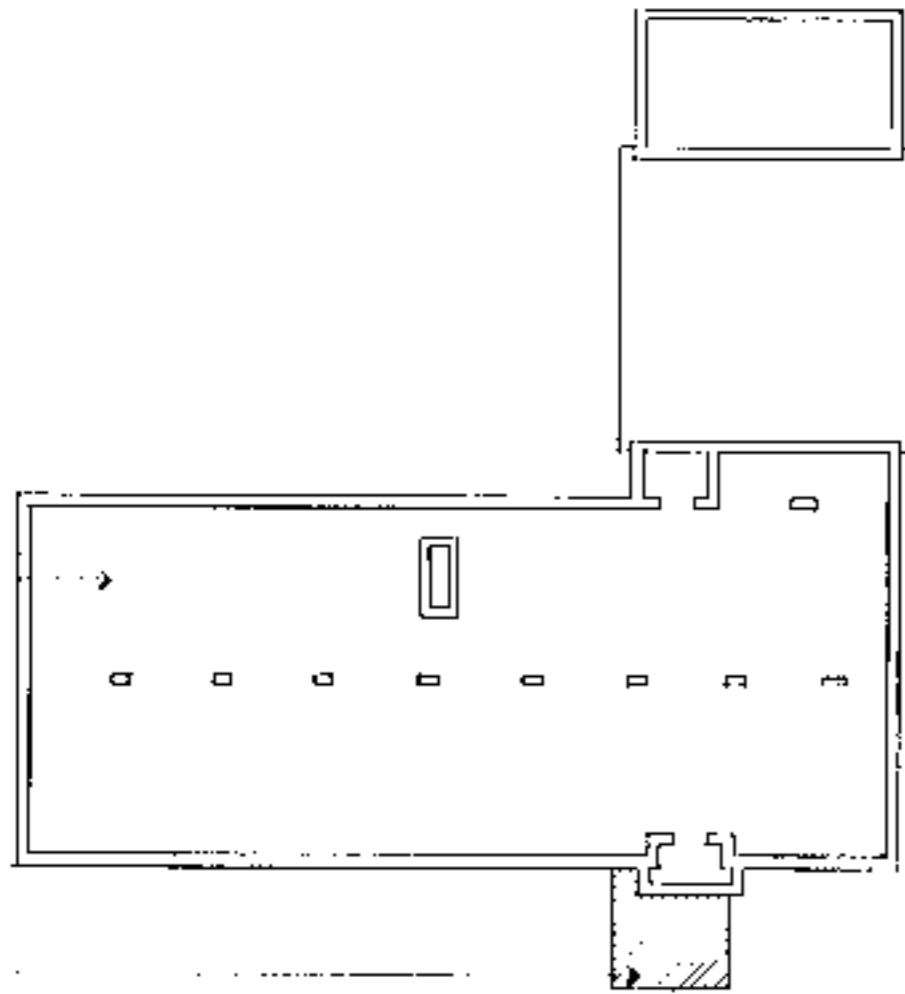


Helping people put knowledge to work

**N.C. AGRICULTURAL EXTENSION SERVICE**  
HOME ECONOMICS — HOUSING  
N.C. State University, Raleigh, North Carolina  
and  
U.S. Department of Agriculture, Cooperating

<b>3-BEDROOM HOUSE</b> W/CARPORT	2042 Sq. Ft. HTD.
REV. OF NC 80	N.C. 7 '86 Sheet 3 of 3

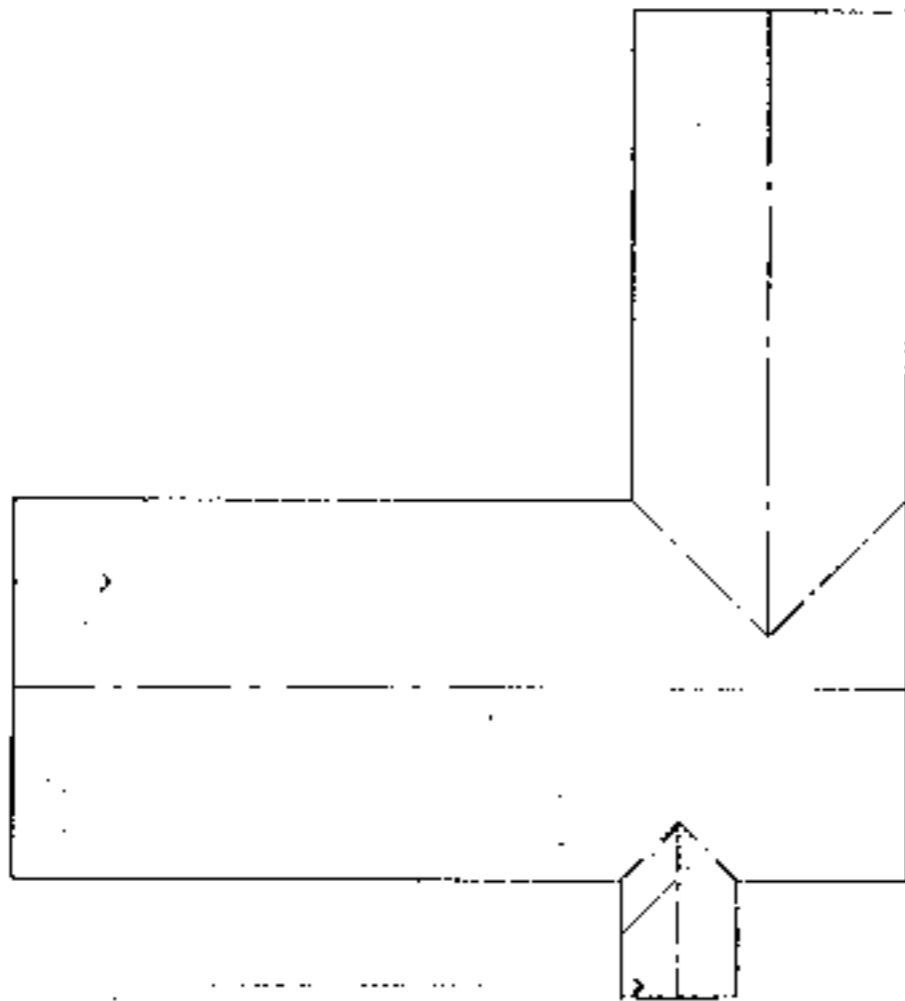
FOUNDATION PLAN  
SEE ORIGINAL PLANS  
FOR DIMENSIONS, NOTES ETC.



AMENDED ACCESSIBLE  
FOUNDATION AREA  
REVISE AS NECESSARY

KEY FOUNDATION PLAN  
NO SCALE

ROOF PLAN  
SEE ORIGINAL PLANS  
FOR DIMENSIONS, NOTES ETC.



AMENDED ACCESSIBLE  
ROOF AREA  
REVISE AS NECESSARY

KEY ROOF FRAMING PLAN  
NO SCALE

**INFORMATION**

**Supplemental Accessible House Plan # 7A**

Adapted from and to be used in conjunction with original plan # NC 7

SEE ORIGINAL PLANS FOR ALL WALL SECTIONS, INTERIOR ELEVATIONS, DETAILS, CONSTRUCTION  
DETAILS, SCHEDULES AND MISCELLANEOUS INFORMATION.

**DISCLAIMER** These plans are supplements to plans offered by the NC Cooperative Extension Service. They are intended to improve access for people with mobility impairments and are provided for information purposes only. It is the responsibility of the contractor and owner to comply with all applicable federal, state and local codes, ordinances and regulations in the construction of the house. Modifications to these plans will be needed to meet special individual needs of people with disabilities and may also be necessary to comply with specific requirements for energy codes, wind seismic, snow or other special loading conditions. This service is used in conjunction with the Extension Service plans and all dimensions, notes and recommended details must be coordinated with the original set and verified in the field by the owner and contractor. For information on product manufacturers contact the Center for Accessible Housing.

**BUILDING DATA**

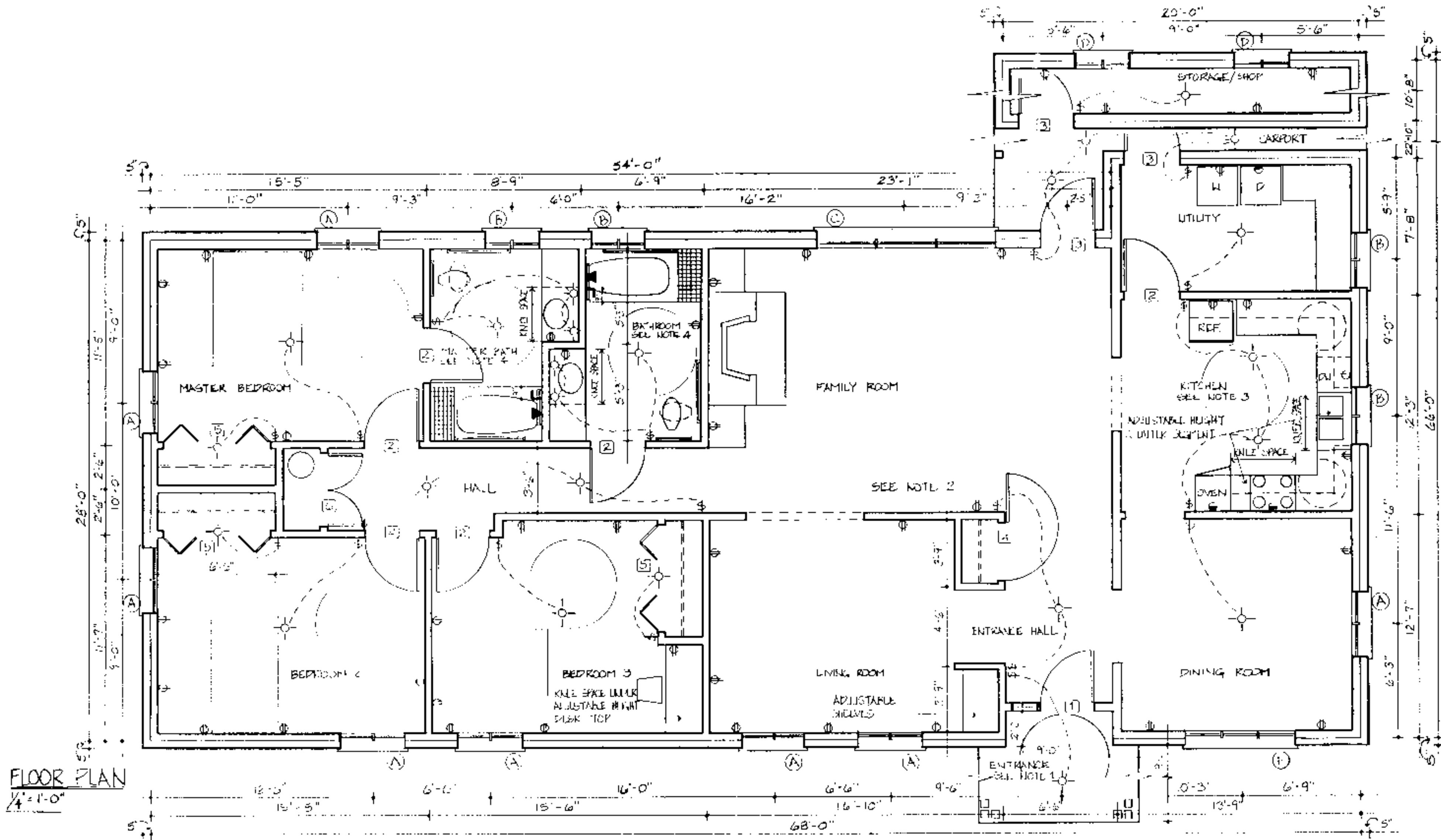
# Bedrooms	3
Square Footage: heated	2042
storage/porch	725
parch	81
total	2748

**PLAN DATA**  
Adapted by: C. Sanchez  
Drawn by: C. Humkey  
Approved by: R. Mace

Center for Accessible Housing  
School of Design  
NCSU  
Box 8613  
Raleigh, NC 27695-8613  
919.515.3082 voice/TDD  
919.515.3023 fax

Accessible House Plan # 7A  
Adapted from NC Collection Plan # 7  
North Carolina Cooperative Extension Service  
NCSU Home Economics - Housing  
Box 7605  
Raleigh, NC 27695-7605  
US Department of Agriculture, Cooperating

**PLAN DATA**  
Sheet 1 of 6  
Date May 93



**FLOOR PLAN**

1/4" = 1'-0"

**Note 1. Entrance**

- Viewing window glass or sidelights or high/low peep hole viewer or extreme wide angle lens viewer for security
- Level clear floor area both inside and outside of door to provide maneuvering space at doors
- 36 - inch wide doors
- Maximum of 1/4 - inch vertical change in level at thresholds and other changes in level
- Lever handle on doors
- 12 - inch wide outside shelf for packages

**Note 2. General**

- Electrical receptacles are to be placed at easy to reach height: electrical outlets 18 inches above floor, light switches 38 inches above floor
- Additional electrical outlets in bedrooms to accommodate assistive devices
- Thermostats/controls 44 inches above the floor
- Rocker light switches
- 42 - inch clearance in hallways, 32 - inch width minimum clear opening width in doorways, 24 - inch wide space on latchside of doors on pull side
- Lever handle on doors. Auxiliary handles on doors for ease in closing. Loop type handles 30-36 inches above floor and 6 inches from hinge edge on pull side.
- Window sill between 18 and 36 inches above the floor
- Casement windows
- Smooth dense floor coverings for easy maneuvering
- Adjustable height closet rods and storage shelves from 3' 0" to 5' 6"

**Note 3. Kitchen**

- Counter segments elevation can be set at different heights from 30 to 36 inches.
  - Kneespace with pipe protection panel or base cabinets at key locations
  - Front mounted controls on the stove
  - Loop cabinet handles and drawer pulls
  - 5' diameter turning space
  - Lever handle faucet
  - Cabinet doors sliding or spring loaded hinges on cabinet doors
  - Cabinets with full extension pull out shelves
  - Lazy Susans
  - Side-by-side refrigerator/freezer
  - Adaptable removable base cabinets
- See sheet 5 for adjustable sink and counter detail, section at garbage disposal enclosure detail, and counter support bracket detail.

**Note 4. Bathrooms**

- Hand held shower head
  - Lever handle faucets
  - Offset controls in tub/shower
  - Open front lavatory with knee space with protection panel
  - 5' diameter turning space
  - Dual lever faucet controls permit easy manipulation of the flow of water and water temperature.
  - Reinforced walls to accommodate grab bars. Suggested grab bar locations are as required by ANSI. Actual location may need to meet individual needs. Full wall reinforcement, as specified, allows for any position or height to be accommodated.
- See sheets 5 & 6 for section at bathroom counter and sink detail, and typical suggested roll-in shower floor and drain detail at wood frame construction.

**DISCLAIMER** These plans are supplements to plans offered by the NC Cooperative Extension Service. They are intended to improve access for people with mobility impairments and are provided for informational purposes only. It is the responsibility of the contractor and owner to comply with all the applicable federal, state and local codes, ordinances and regulations in the construction of the house. Modifications to these plans will be needed to meet special individual needs of people with disabilities and may also be necessary to comply with specific requirements for energy codes, wind seismic, snow or other special loading conditions. This set must be used in conjunction with the Extension Service plans and all dimensions, notes and recommended details must be coordinated with the original set and verified in the field by the owner and contractor. For information on product manufacturers contact the Center for Accessible Housing.

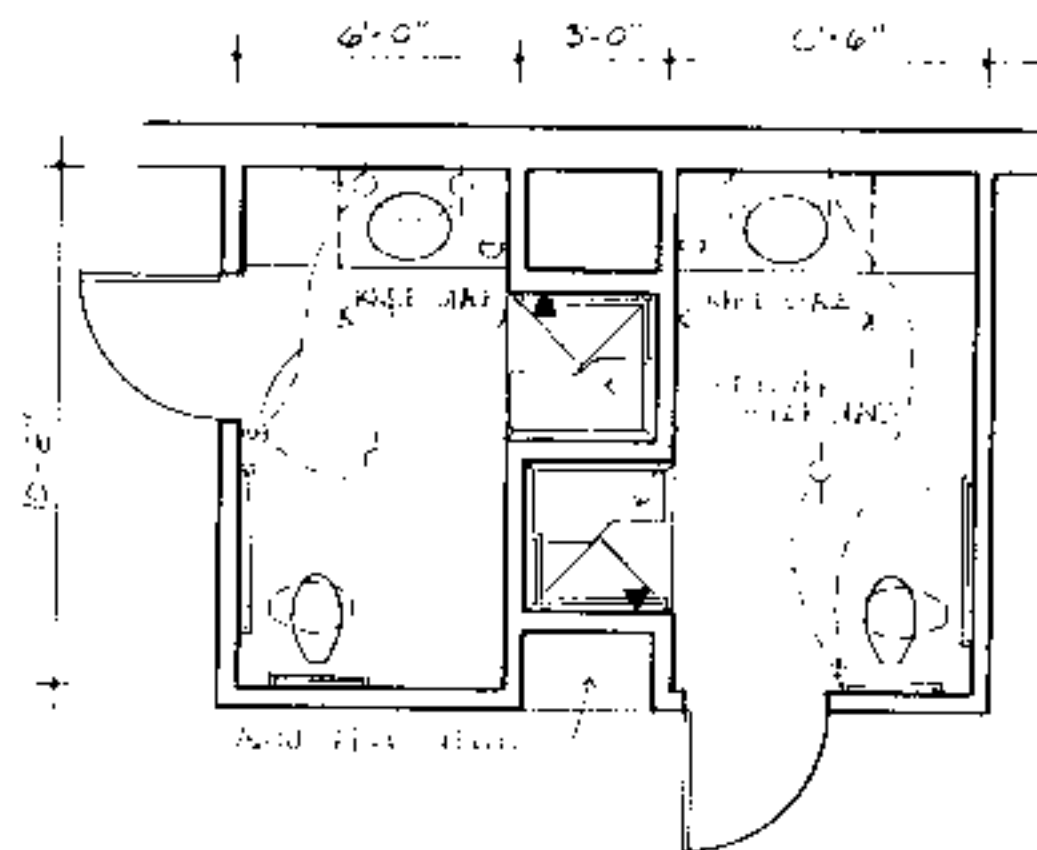
BUILDING DATA	
# Bedrooms	3
Square Footage: heated	2042
storage/carport	725
porch	81
total	2748

**PLAN DATA**  
 Adopted by: C. Sanchez  
 Drawn by: C. Humkey  
 Approved by: R. Moore

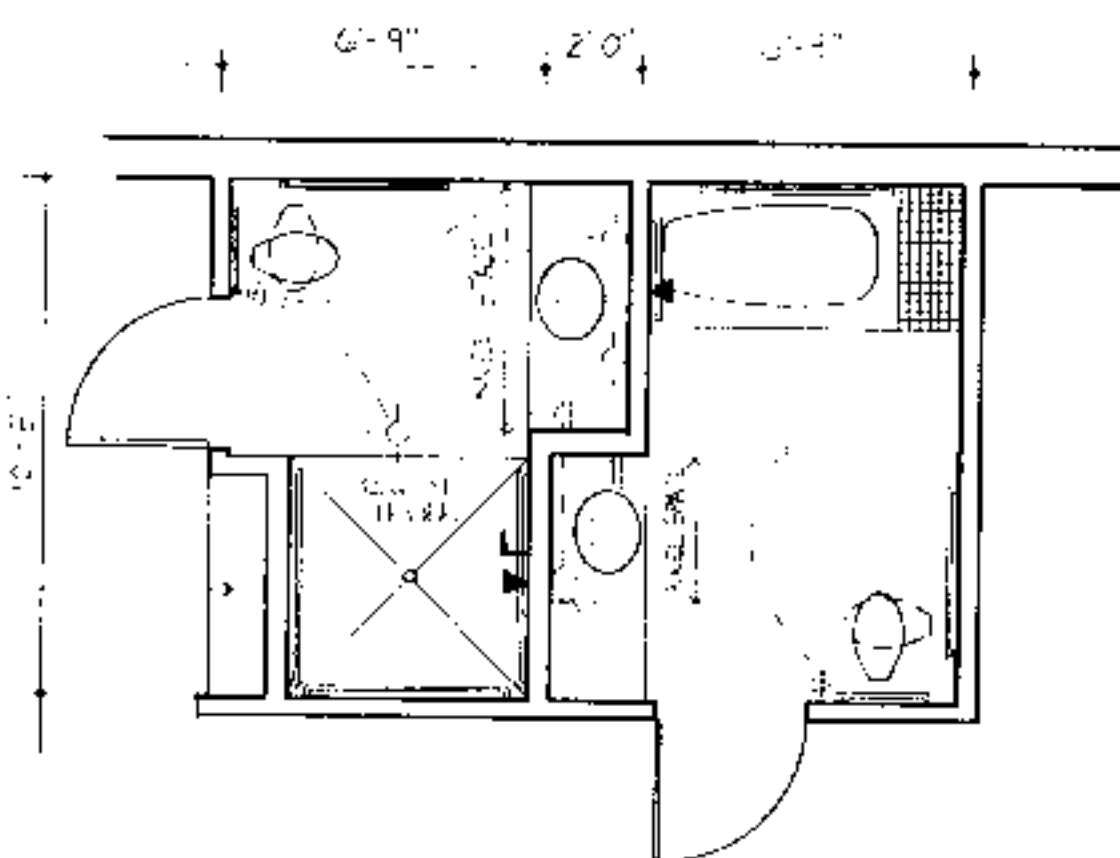
Center for Accessible Housing  
 School of Design  
 NCSU  
 Box 8413  
 Raleigh, NC 27695-8413  
 919.515.3082 voice/TDD  
 919.515.3023 fax

Accessible House Plan # 7A  
 Adopted from NC Collection Plan # 7  
 North Carolina Cooperative Extension Service  
 NCSU Home Economics - Housing  
 Box 7605  
 Raleigh, NC 27695-7605  
 US Department of Agriculture, Cooperating

**PLAN DATA**  
 Sheet 2 of 6  
 Date May 92



BATHROOM OPTION - 3x3 TRANSFER SHOWER  
 1/4" = 1'-0"



BATHROOM OPTION - 5x5 ROLL IN SHOWER/  
 TUB WITH BUILT-IN TRANSFER SURFACE  
 1/4" = 1'-0"

House # 6

Door Schedule		Symbol	
Mark	Size	Description	No. Required
1	3'0" x 6'8"	exterior hardwood w/side light	1
2	3'0" x 6'8"	interior hardwood	6
3	3'0" x 6'8"	exterior hardwood	3
4	3'3" x 6'8"	interior hardwood	1
5	6'0" x 6'8"	interior bifold	3
6	4'0" x 6'8"	int. hardwood (closet)	1

Window Schedule		Symbol	
Mark	Size	Description	No. Required
A	3'6" x 5'2"	cosement	8
B	3'0" x 3'2"	cosement	4
C	10'0" x 5'2"	cosement	1
D	3'0" x 5'2"	cosement	2
E	6'0" x 5'2"	cosement	1

**DISCLAIMER** These plans are supplements to plans ordered by the NC Cooperative Extension Service. They are intended to improve access for people with mobility impairments and are provided for information purposes only. It is the responsibility of the contractor and owner to comply with all the applicable federal, state and local codes, ordinances and regulations in the construction of the house. Modifications to these plans will be needed to meet special individual needs of people with disabilities and may also be necessary to comply with specific requirements for energy codes, wind seismic, snow or other special loading conditions. The set must be used in conjunction with the Extension Service plans and all dimensions, notes and recommendations details must be co-ordinated with the original set and verified in the field by the owner and contractor. For information on product manufacturers contact the Center for Accessible Housing.

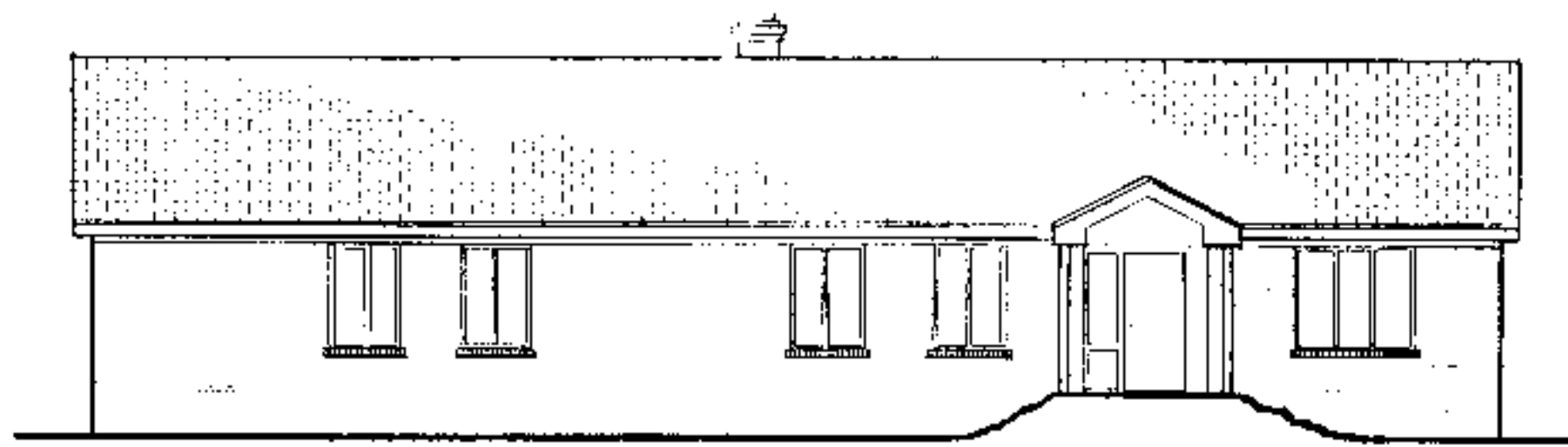
BUILDING DATA	
# Bedrooms	3
Square Footage: heated	2042
storage/corport	925
porch	81
total	2746

**PLAN DATA**  
 Adapted by: C. Sanchez  
 Drawn by: C. Humkey  
 Approved by: R. Mace

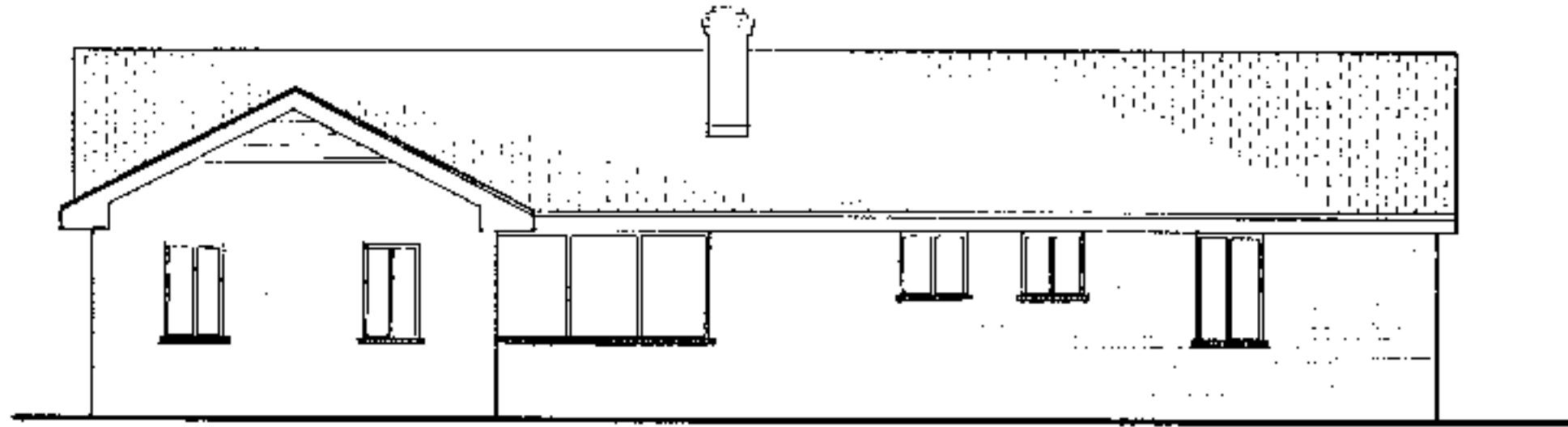
Center for Accessible Housing  
 School of Design  
 NCSU  
 Box 8613  
 Raleigh, NC 27695-8613  
 919.515.3082 voice/TDD  
 919.515.3023 fax

Accessible House Plan # 75  
 Adapted from NC Callation Plan # 7  
 North Carolina Cooperative Extension Service  
 NCSU Home Economics - Housing  
 Box 7605  
 Raleigh, NC 27695-7605  
 US Department of Agriculture, Cooperating

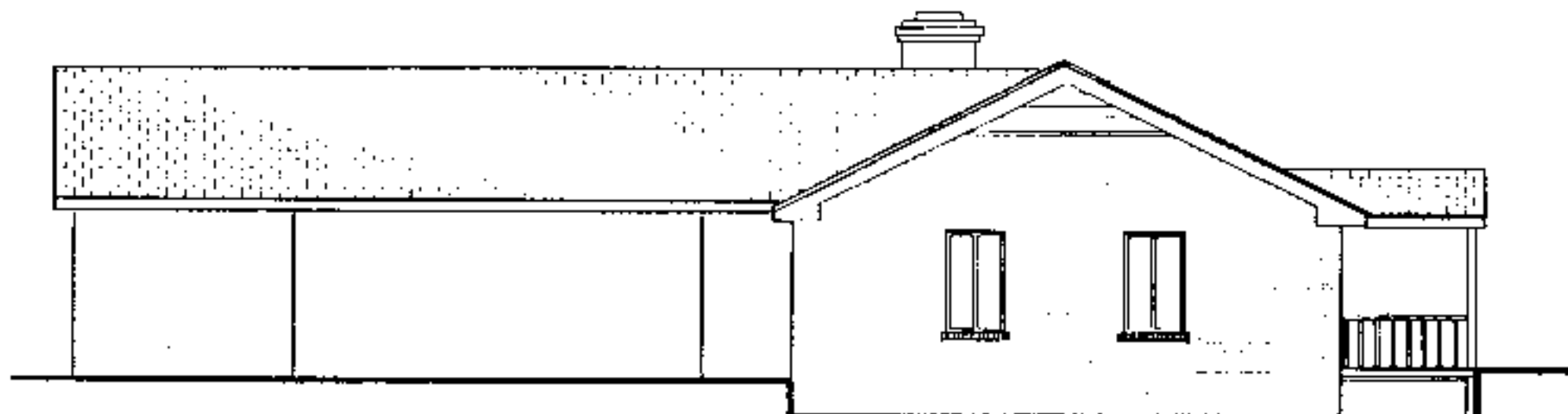
**PLAN DATA**  
 Sheet 2 of 6  
 Date May 92



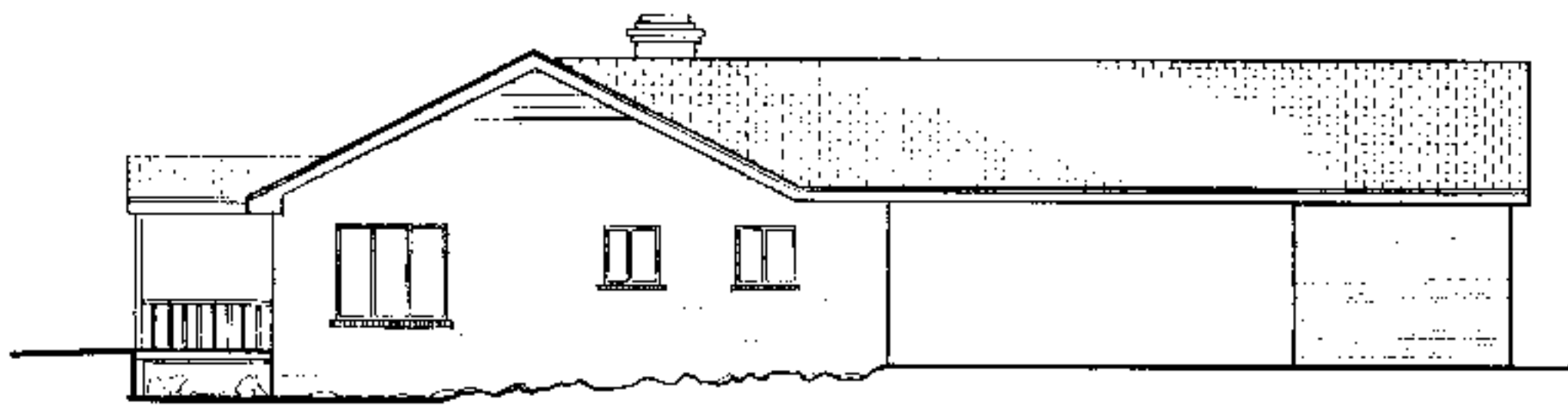
FRONT ELEVATION  
1/8" = 1'-0"



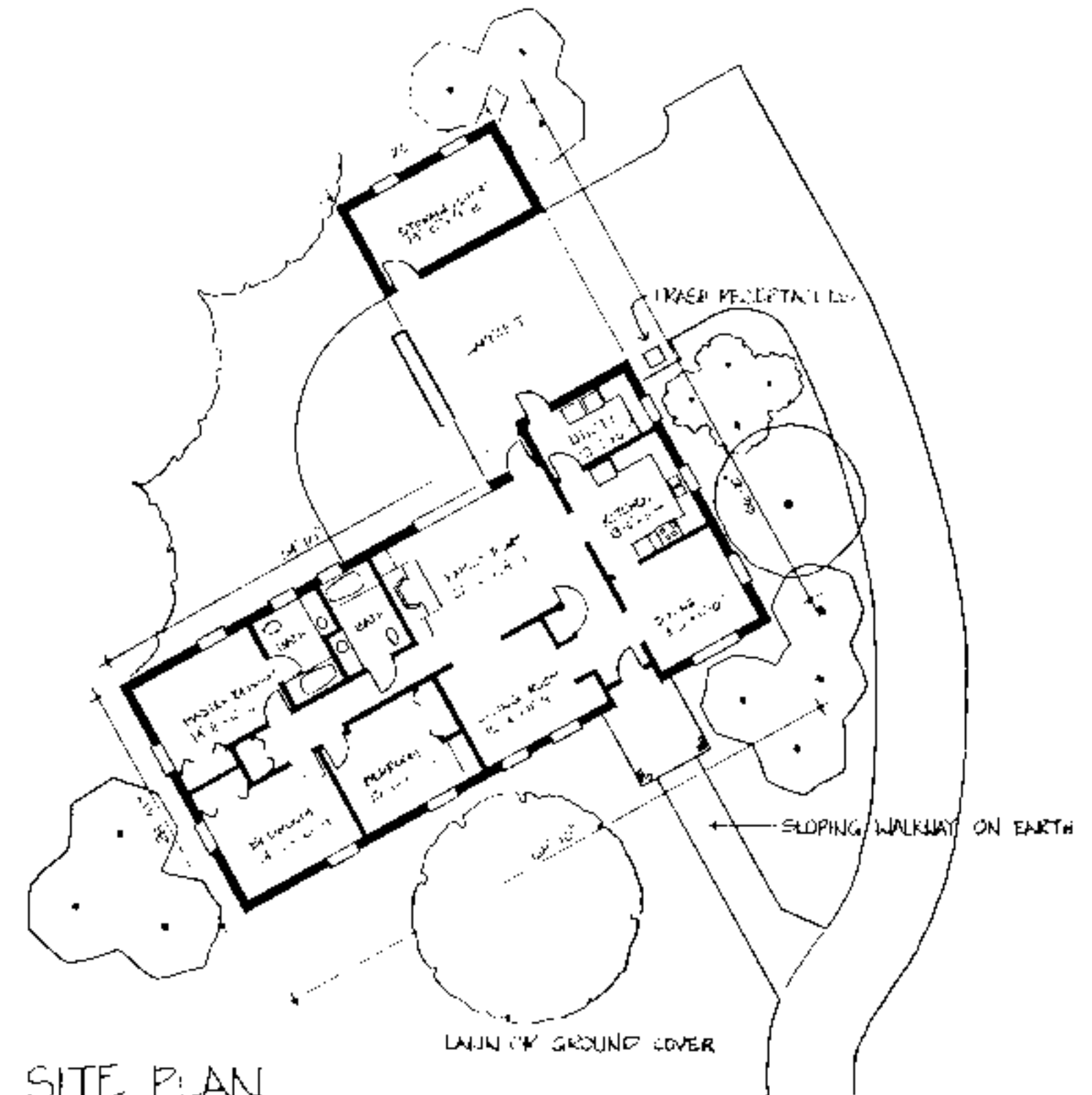
REAR ELEVATION  
1/8" = 1'-0"



LEFT SIDE ELEVATION  
1/8" = 1'-0"



RIGHT SIDE ELEVATION  
1/8" = 1'-0"



SITE PLAN  
1" = 15'-0"

**Site Plan Notes**

- ◆ When siting house and designing exterior walkways, consider topography, existing vegetation, solar orientation, and drainage.
- ◆ Eliminate the need for a ramp or limit its length and slope by placing the foundation as close to the ground as possible.
- ◆ Create attractive accessible entrances utilizing earthwork and site grading. Short wood framed bridges spanning from the elevated floor of the house to an uphill site location eliminate the need for special drainage, waterproofing and ventilation measures. On flatter sites, the bridge solution is possible by building an earth berm and retaining wall with a sloped walk.
- ◆ Locate walkways to provide convenient access to the parking area, house entrances, outside sitting area, mail/newspaper delivery area, and trash/recycling receptacles. Provide 1/2 inch raised edge on the side of walkways to prevent stroller or wheelchairs from rolling off accidentally.
- ◆ Create attractive enclosure for trash/recycling containers, that would also prevent them from blowing over or being disturbed by animals.
- ◆ Provide raised beds for gardening, an outside entertaining area and a recreational/play area. Locate raised beds/vegetable/flower near walkways, entrances and seating areas to maximize enjoyment, while facilitating ease of maintenance.
- ◆ When designing outside features, such as ramps, railings, or raised beds, use similar architectural details, colors, and building materials as in the (exterior) residence.
- ◆ Consider minimizing lawn space, or replacing it entirely with ground cover or mulch to reduce maintenance.
- ◆ Select plants which are appropriate for the soil and climate, such as indigenous species, to reduce maintenance. Include a variety of species of ground cover, and size and species of shrubbery to improve the ecological balance and wild life habitat.
- ◆ Choose plants which will mature at the desired height and provide year-round interest in views both outside and from within the house.
- ◆ Use multisense plants (those with interesting color, textures, fragrance, or edible part) and plants which attract birds and butterflies to maximize landscape enjoyment without increasing maintenance.

**DISCLAIMER** These plans are supplements to plans offered by the NC Cooperative Extension Service. They are intended to improve access for people with mobility impairments and are provided for information purposes only. It is the responsibility of the contractor and owner to comply with all the applicable Federal, state and local codes, ordinances and regulations in the construction of the house. Modifications to these plans will be needed to meet special individual needs of people with disabilities and may also be necessary to comply with specific requirements for energy codes, wind, seismic, snow or other special loading conditions. This set must be used in conjunction with the Extension Service plans and all dimensions notes and recommended details must be co-ordinated with the original set and verified in the field by the owner and contractor. For information on product manufacturers contact the Center for Accessible Housing.

BUILDING DATA	
# Bedrooms	3
Square Footage: heated	2042
storage/carport	725
porch	81
total	2748

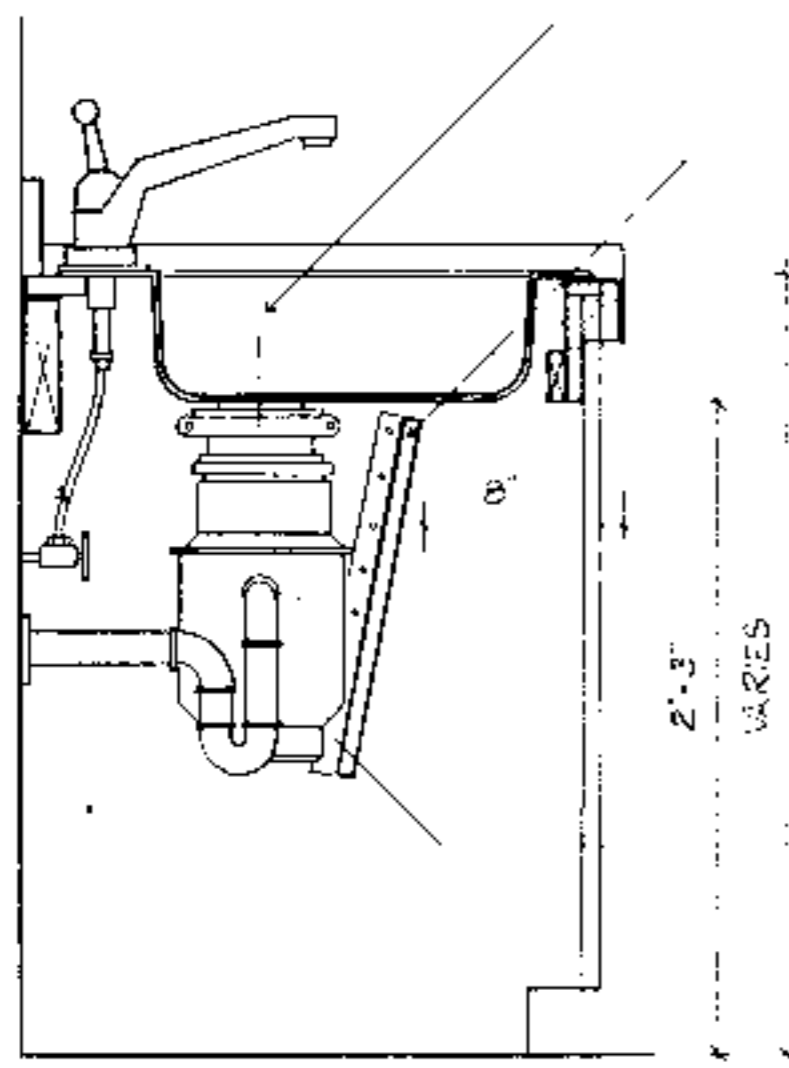
**PLAN DATA**  
Adapted by: C. Sanchez  
Drawn by: C. Humby  
Approved by: R. Mace

Center for Accessible Housing  
School of Design  
NCSU  
Box 8613  
Raleigh, NC 27695-8613  
919.515.3082 voice/TDD  
919.515.3023 fax

Accessible House Plan # 775  
Adapted from NC Collection Plan # 775  
North Carolina Cooperative Extension Service  
NCSU Home Economics - Housing  
Box 7605  
Raleigh, NC 27695-7605  
US Department of Agriculture, Composting

**PLAN DATA**  
Sheet 4 of 6  
Date May 93

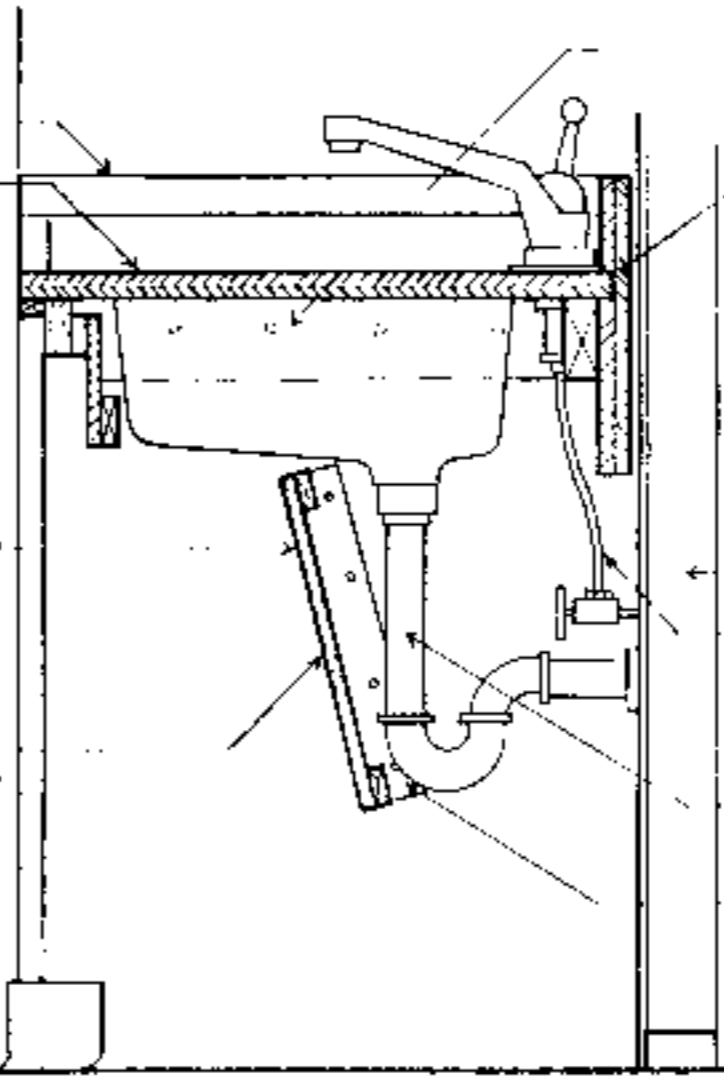
FLEXIBLE SUPPLY PIPES



MOEN SINK E-2522 4 HL/HR  
 PIPE PROTECTION PANEL  
 1/4" TO 3/8" PLYWOOD  
 VENEER PANEL  
 1" x 2" MOUNTING STRIPS  
 AT CABINET BOUND

TYPICAL SECTION AT GARBAGE DISPOSAL ENCLOSURE  
 1/2" = 1'-0"

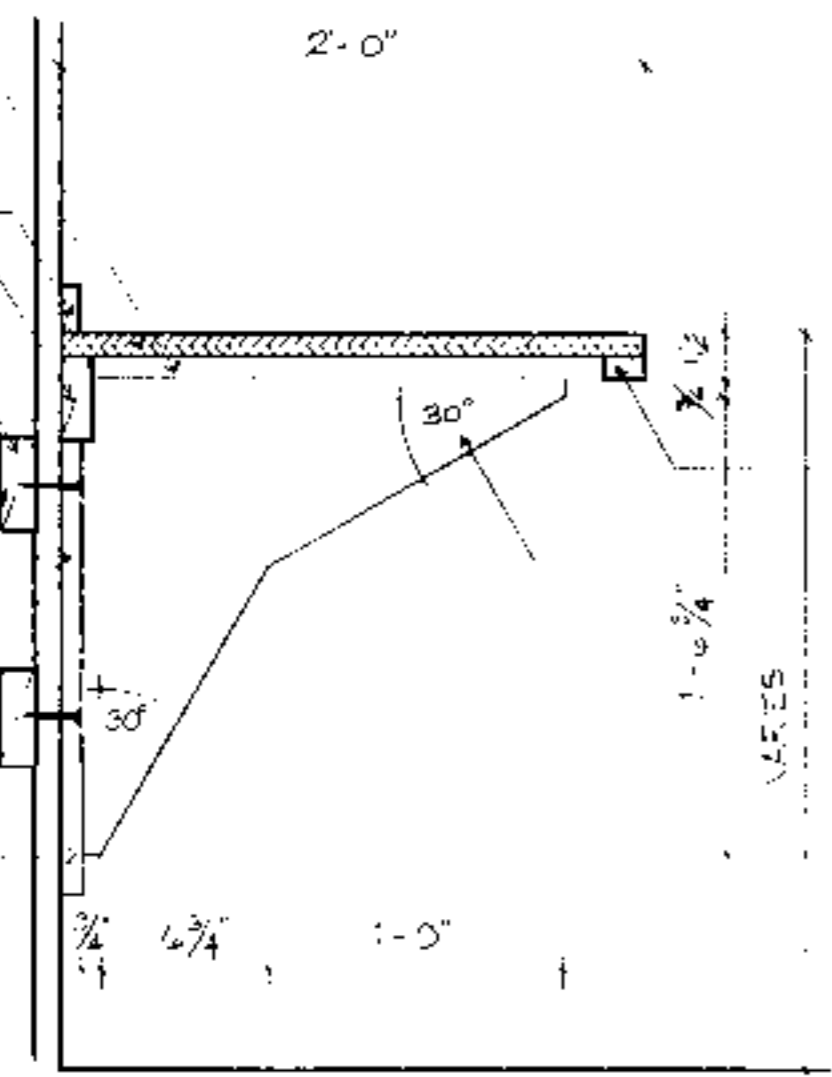
STANDARD  
 BASE CABINETS  
 ADJUSTABLE  
 SINK & COUNTER  
 7" MAX.  
 1/4" TO 3/8" PLYWOOD  
 VENEER PANEL  
 WITH 1" x 2"  
 STIFFENERS AS  
 NEEDED  
 REMOVABLE  
 PANEL, ANGLE AND  
 LENGTH CONCEAL  
 PIPES, SCREW  
 TO MOUNTING  
 STRIPS



MOVABLE LOAD BLOCK  
 SUPPORT AT  
 ADJACENT CABINETS  
 3/4" PLYWOOD WITH  
 PLASTIC LAMINATE  
 STUP KNEE WALL  
 FLEXIBLE SUPPLY PIPE  
 TAIL PIECE WITH  
 SLIP JOINT  
 1" x 2" MOUNTING STRIPS  
 AT CABINET BEYOND

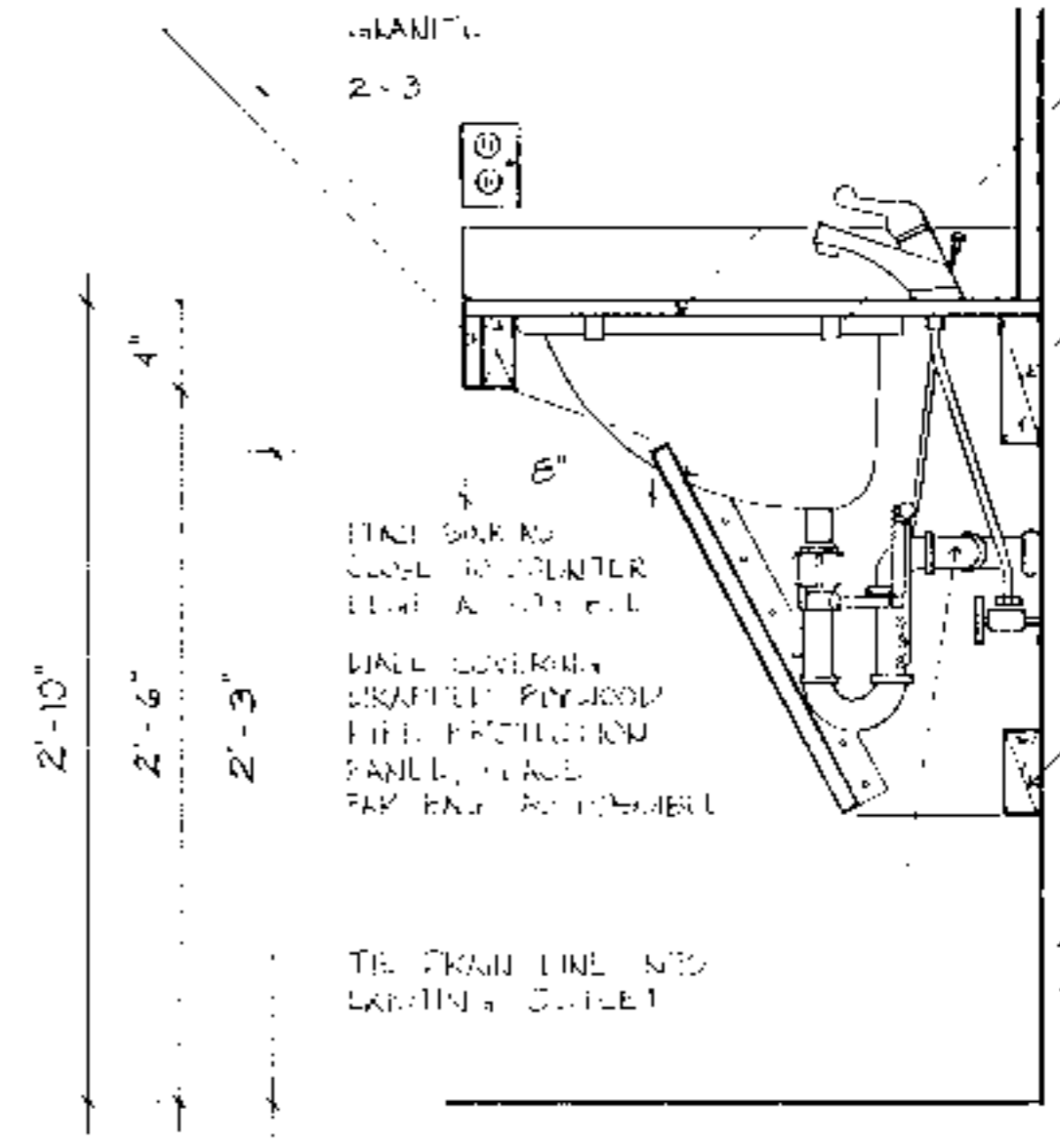
TYPICAL ADJUSTABLE SINK & COUNTER DETAIL  
 1/2" = 1'-0"

1" x 4" FLANGE  
 3/4" PLYWOOD WITH  
 PLASTIC LAMINATE  
 1" x 2" BACKFLASH  
 2" x 4"  
 SOLID WOOD  
 STRUCTURAL BLOCKING  
 BETWEEN STUDS BY  
 BRACKETS AS NECESSARY  
 BRACKET FLANGE  
 SCREWED NAILED OR  
 BOLTED TO BLOCKING  
 OR STUDS AS NECESSARY  
 TO SUPPORT ALL LOADS  
 1" x 4" SOLID WOOD  
 FLANGE ROUTED  
 LET IN GLEUED AND  
 NAILED TO PLYWOOD



1" x 2"  
 3/4" BIRCH VENEER PLYWOOD  
 WITH 1/4" x 3/8" SOLID WOOD  
 EDGE BAN LET-IN, GLEUED  
 AND NAILED

TYPICAL SECTION - COUNTER SUPPORT BRACKET  
 1/2" = 1'-0"



NEW RECEPTACLE  
 GRANITE COUNTERTOP  
 CUT OUT PIPE  
 PROTECTION PANEL  
 AROUND SINK HOLE  
 2x6  
 CONTINUOUS WOOD  
 SUPPORT BLOCKS  
 OR SCREWS TO  
 METAL STUDS  
 2x4  
 1'-0"

TYPICAL SECTION THROUGH BATHROOM COUNTER AND SINK  
 1/2" = 1'-0"

**DISCLAIMER** These plans are supplements to plans offered by the NC Cooperative Extension Service. They are intended to improve access for people with mobility impairments and are provided for information purposes only. It is the responsibility of the contractor and owner to comply with all the applicable federal, state and local codes, ordinances and regulations in the construction of the house. Modifications to these plans will be needed to meet special individual needs of people with disabilities and may also be necessary to comply with specific requirements for energy codes, wind, seismic, snow or other special loading conditions. The set must be used in conjunction with the Extension Service plans and all dimensions, notes and recommended details must be co-ordinated with the original set and verified in the field by the owner and contractor. For information on product manufacturers contact the Center for Accessible Housing.

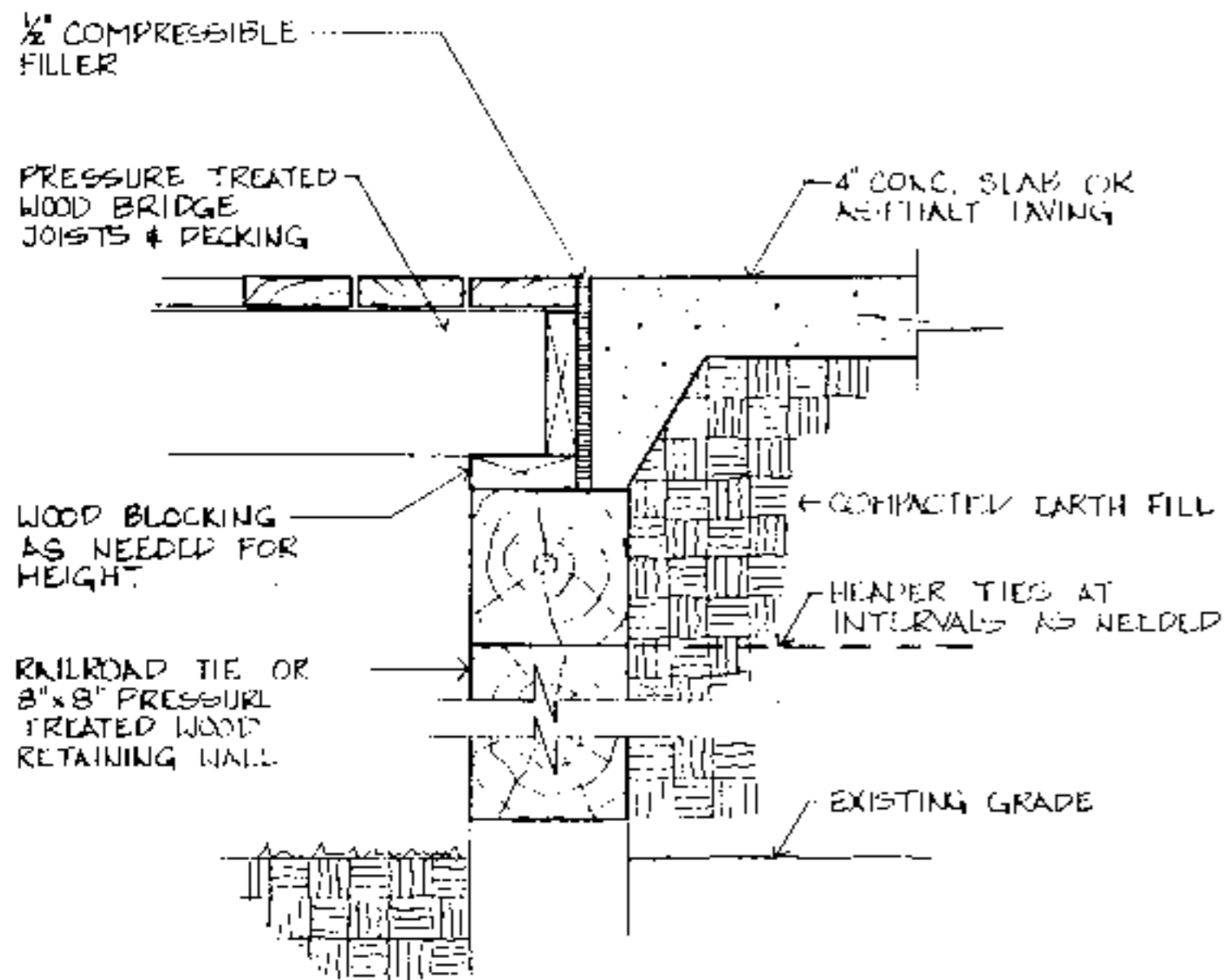
BUILDING DATA	
# Bedrooms	_____
Square Footage: heated	_____
storage/carport	_____
porch	_____
total	_____

**PLAN DATA**  
 Adapted by: C. Sanchez  
 Drawn by: C. Humkey  
 Approved by: R. Moore

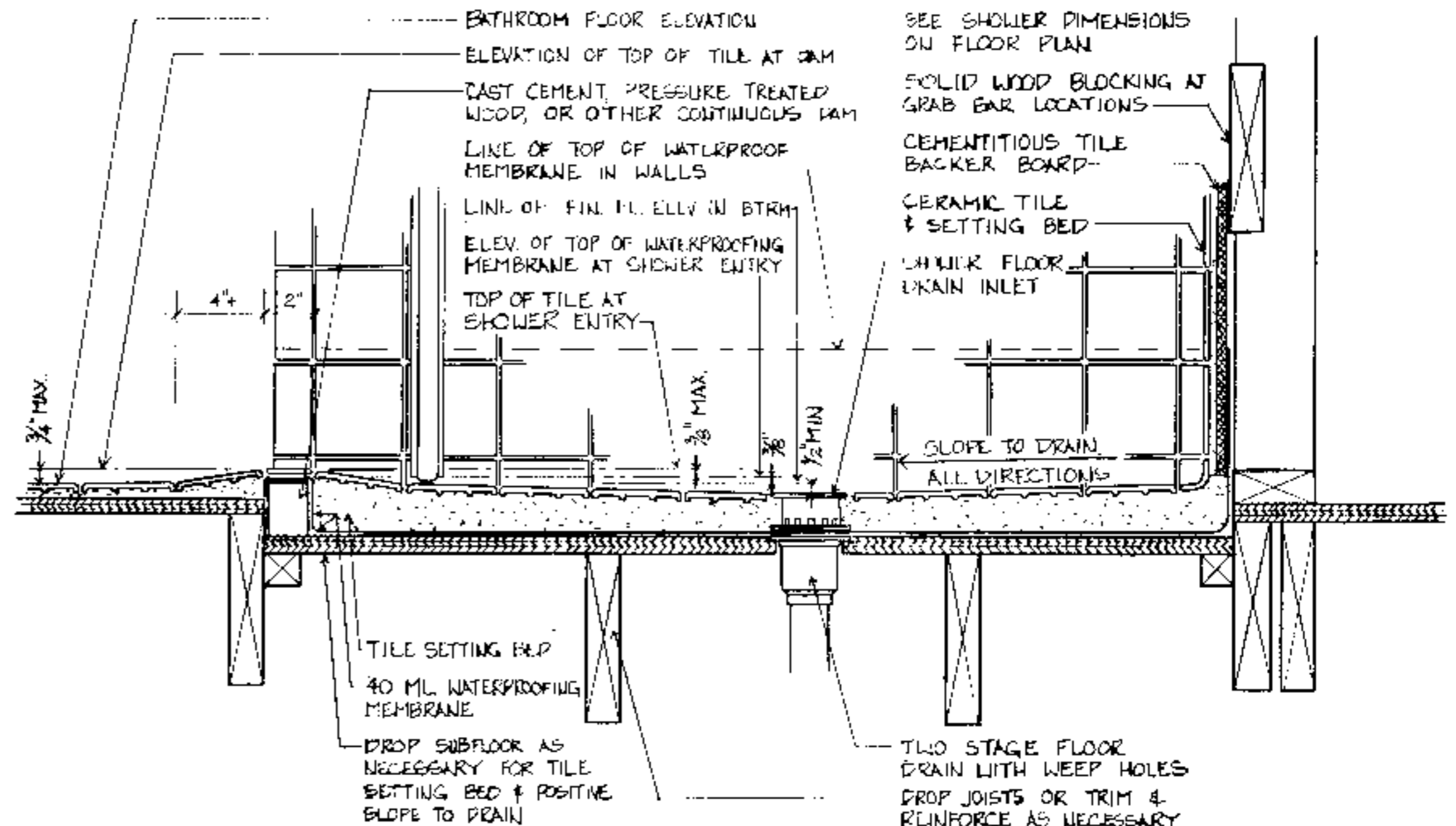
Center for Accessible Housing  
 School of Design  
 NCSU  
 Box #613  
 Raleigh, NC 27695-0613  
 919.515.3082 voice/TDD  
 919.515.3023 fax

Accessible House Plan # \_\_\_\_\_  
 Adapted from NC Collection Plan # \_\_\_\_\_  
 North Carolina Cooperative Extension Service  
 NCSU Home Economics - Housing  
 Box 7605  
 Raleigh, NC 27695-7605  
 US Department of Agriculture, Cooperating

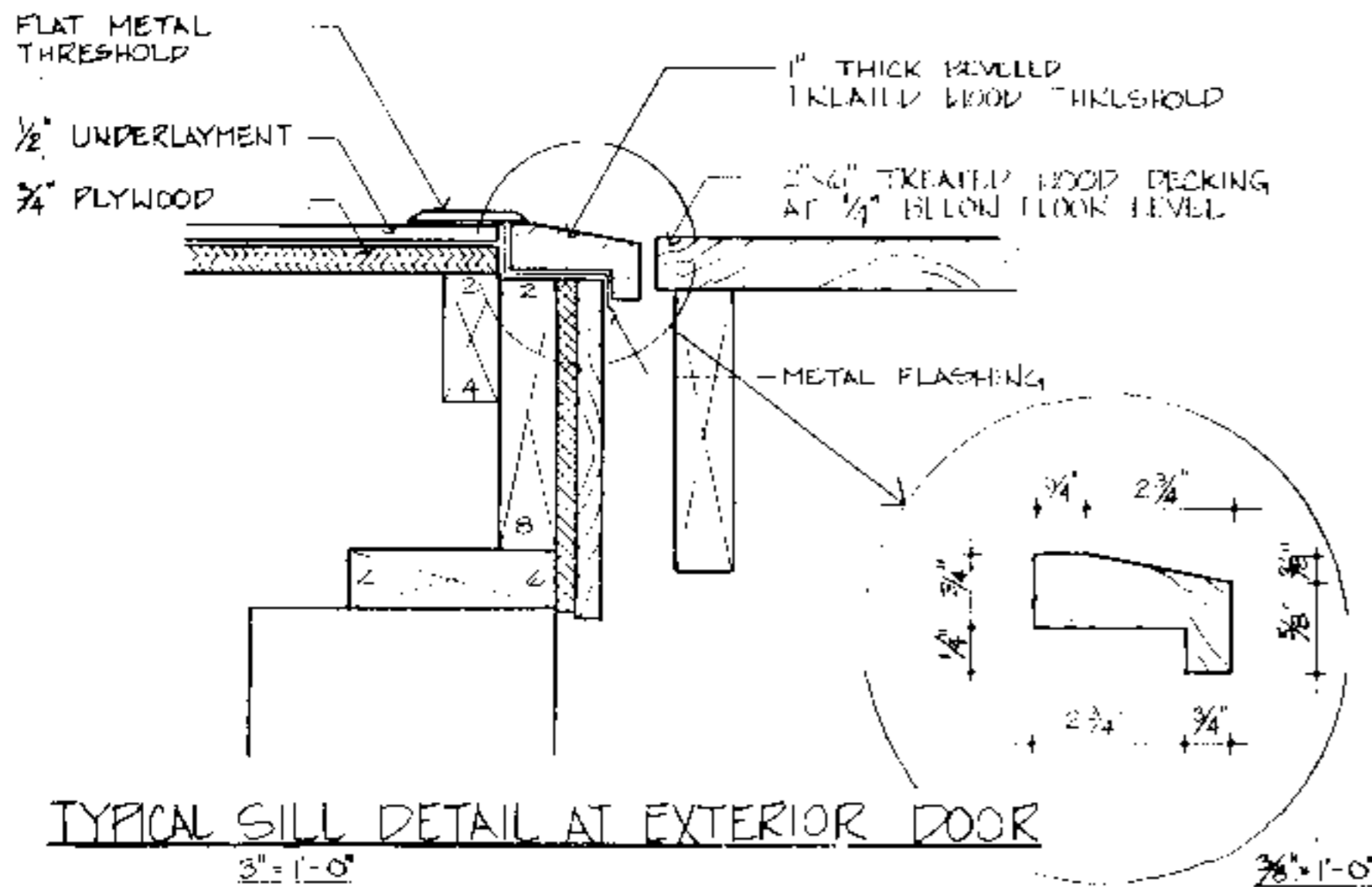
**PLAN DATA**  
 Sheet 5 of 6  
 Date: May 93



**TYPICAL BRIDGE END DETAIL**  
 1/2" = 1'-0"



**TYPICAL ROLL-IN SHOWER FLOOR & DRAIN DETAIL AT WOOD FRAME CONSTRUCTION**  
 3" = 1'-0"



**TYPICAL SILL DETAIL AT EXTERIOR DOOR**  
 3" = 1'-0"

**DISCLAIMER:** These plans are supplements to plans offered by the NC Cooperative Extension Service. They are intended to improve access for people with mobility impairments and are provided for information purposes only. It is the responsibility of the contractor and owner to comply with all applicable federal, state and local codes, ordinances and regulations in the construction of the house. Modifications to these plans will be needed to meet special individual needs of people with disabilities and may also be necessary to comply with specific requirements for energy codes, wind, seismic, snow or other special loading conditions. The set must be used in conjunction with the Extension Service plans and all dimensions notes and recommended details must be coordinated with the original set and verified in the field by the owner and contractor. For information on product manufacturers contact the Center for Accessible Housing.

BUILDING DATA	
# Bedrooms	_____
Square Footage: heated	_____
storage/corner	_____
porch	_____
total	_____

**PLAN DATA**  
 Adapted by: C. Sanchez  
 Drawn by: C. Humkey  
 Approved by: R. Mace

Center for Accessible Housing  
 School of Design  
 NCSU  
 Box 2613  
 Raleigh, NC 27695-0613  
 919.515.3082 voice/TDD  
 919.515.3023 fax

Accessible House Plan # \_\_\_\_\_  
 Adopted from NC Collection Plan # \_\_\_\_\_  
 North Carolina Cooperative Extension Service  
 NCSU Home Economics - Housing  
 Box 7605  
 Raleigh, NC 27695-7605  
 US Department of Agriculture, Cooperating

**PLAN DATA**  
 Sheet 6 of 6  
 Date May 93