

# PRINCIPLE SEVEN:

Size and Space for Approach and Use

---

**Appropriate size and space is provided for approach, reach, manipulation, and use regardless of user's body size, posture, or mobility.**

principle seven

# SIZE AND SPACE FOR APPROACH AND USE



7a1

Lowered counter section at nurses' station provides line of sight for patients of various heights.

## **GUIDELINE 7A:**

**Provide a clear line of sight to important elements for any seated or standing user.**



7a2

Full-length entry sidelight provides outward visibility for persons of any height.

Kitchen cabinets have full-extension pullout shelves to allow user to see entire contents of shelves from a variety of heights and from either side.



7a3

**principle seven**

**SIZE AND SPACE FOR  
APPROACH AND USE**

**GUIDELINE 7B:**

**Make reach to  
all components  
comfortable for  
any seated or  
standing user.**

Water temperature control is offset toward outside of bathtub to reduce reach for both seated and standing bathers.



**7b1**

Under-counter refrigerator provides access from a seated position.



**7b2**

Subway fare machines mounted at various heights offer controls at comfortable locations for seated or standing travelers.



**7b3**

principle seven

# SIZE AND SPACE FOR APPROACH AND USE



7c1

Open-loop door hardware accommodates hands of all sizes.



Chopping knife loop handle accommodates hands of all sizes.



7c2

## **GUIDELINE 7C:**

**Accommodate variations in hand and grip size.**

**principle seven**

**SIZE AND SPACE FOR  
APPROACH AND USE**

**GUIDELINE 7D:**

**Provide adequate space for the use of assistive devices or personal assistance.**

Wide-opening vehicle door provides for close approach to seat with wheelchair or walker.



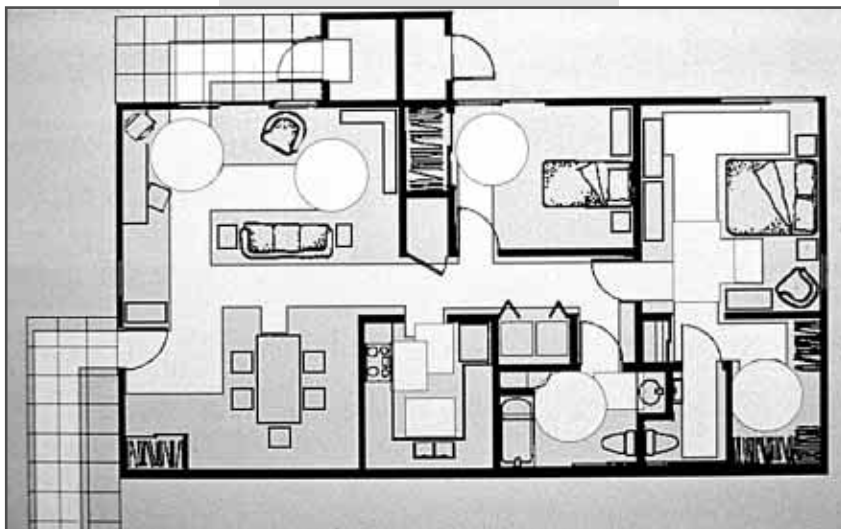
7d1

Wide gate at subway station accommodates wheelchair users as well as commuters with packages or luggage.



7d2

Home floor plan provides ample hallway and room space for wheelchair passage and maneuvering.



7d3

principle seven

**SIZE AND SPACE FOR  
APPROACH AND USE**

*Photography Credits*

- 7a1. Herman Miller, Inc., Zeeland, Michigan
- 7a2. The Center for Universal Design, Raleigh, North Carolina
- 7a3. Stor Trac Company, Denver, Colorado
  
- 7b1. The Center for Universal Design, Raleigh, North Carolina
- 7b2. J.L. Mueller, Inc., Chantilly, Virginia
- 7b3. J.L. Mueller, Inc., Chantilly, Virginia
  
- 7c1. The Center for Universal Design, Raleigh, North Carolina
- 7c2. J.L. Mueller, Inc., Chantilly, Virginia
  
- 7d1. J.L. Mueller, Inc., Chantilly, Virginia
- 7d2. J.L. Mueller, Inc., Chantilly, Virginia
- 7d3. The Center for Universal Design, Raleigh, North Carolina

