

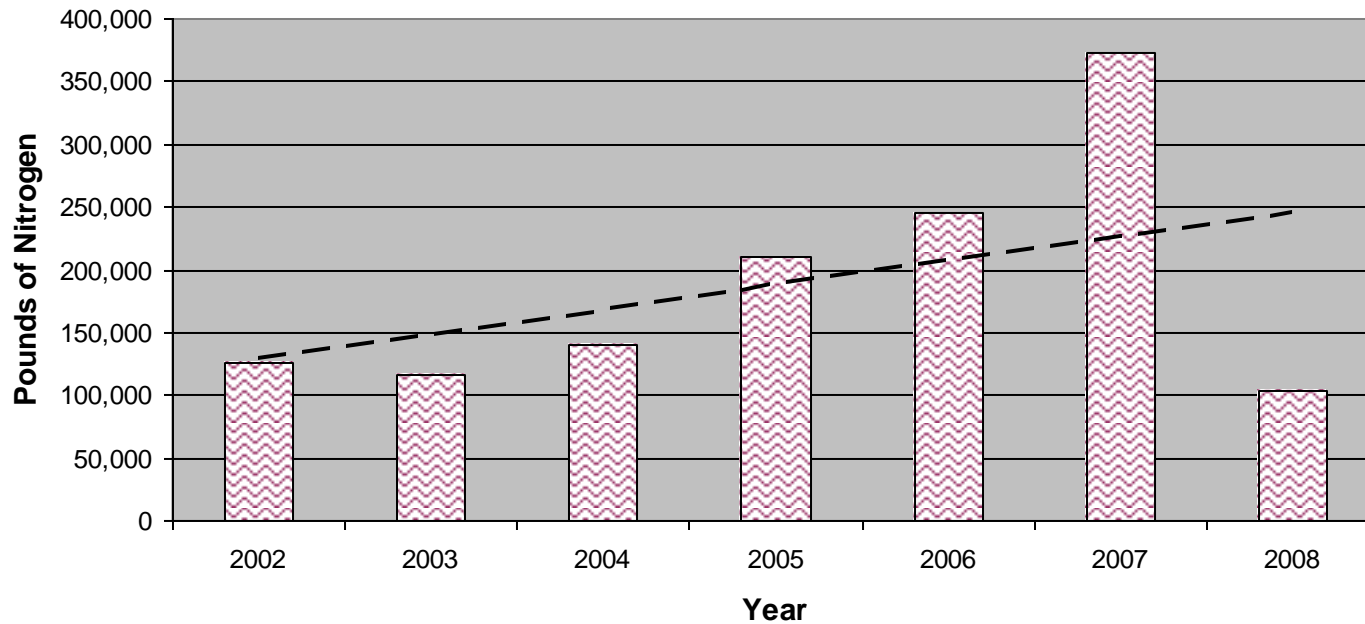
# **EEP Nutrient Offset Program Forecasts by CU and Basin**


# EEP Nutrient Offset Program Forecasts by CU and Basin

Neuse River Basin: Nitrogen

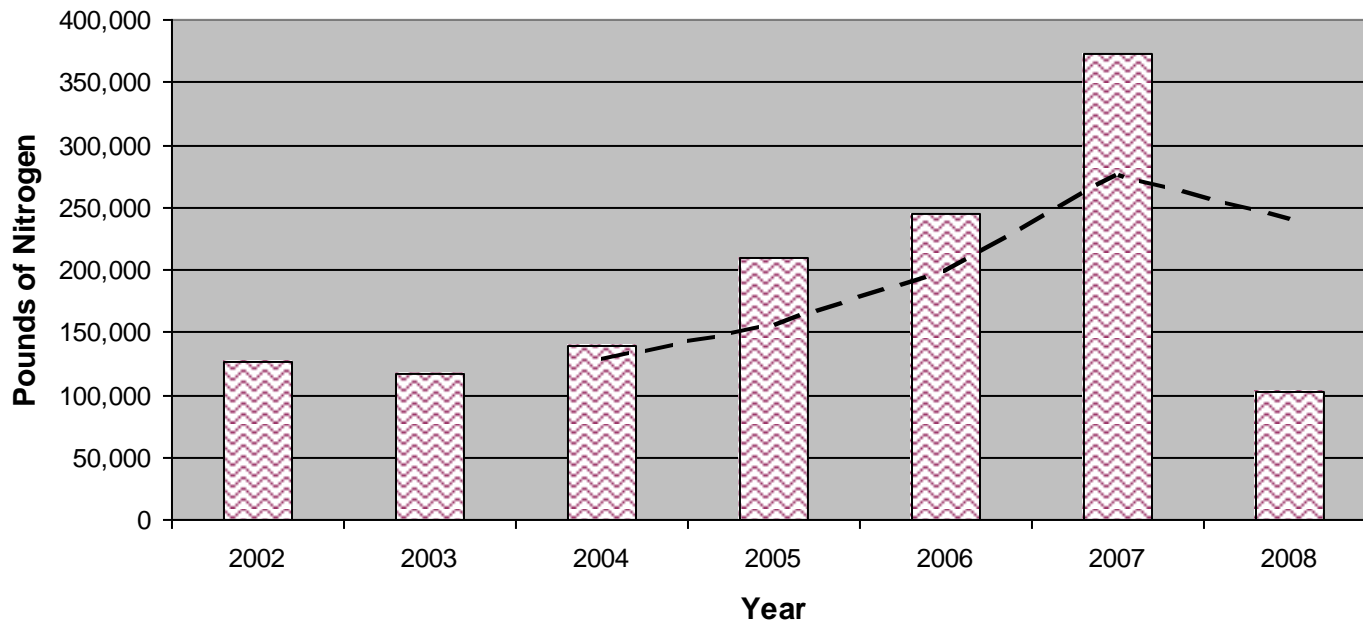
1,354,198 lbs paid for to date

## Neuse Basin: Annual Pounds of N



 Pounds — — Linear Trend

## Neuse Basin: Annual Pounds of N



 Pounds — — 3-Year Moving Average

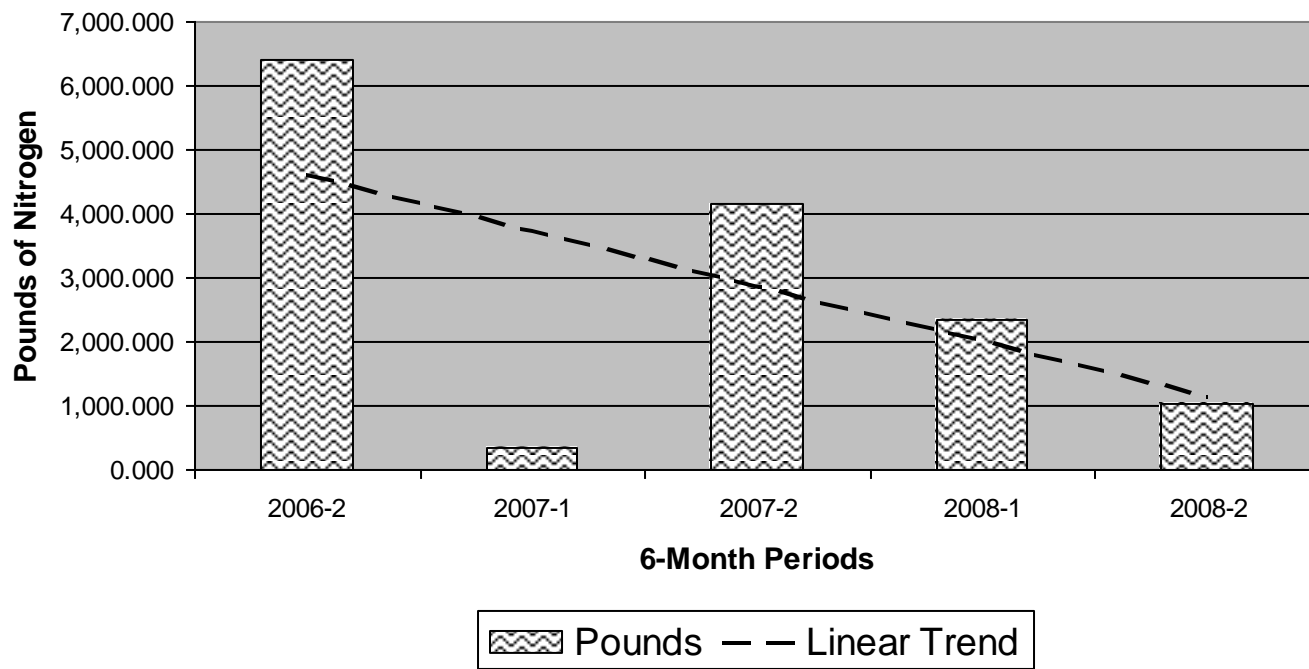
Average for latest 3 years (2006-08) = 239,938

# EEP Nutrient Offset Program Forecasts by CU and Basin

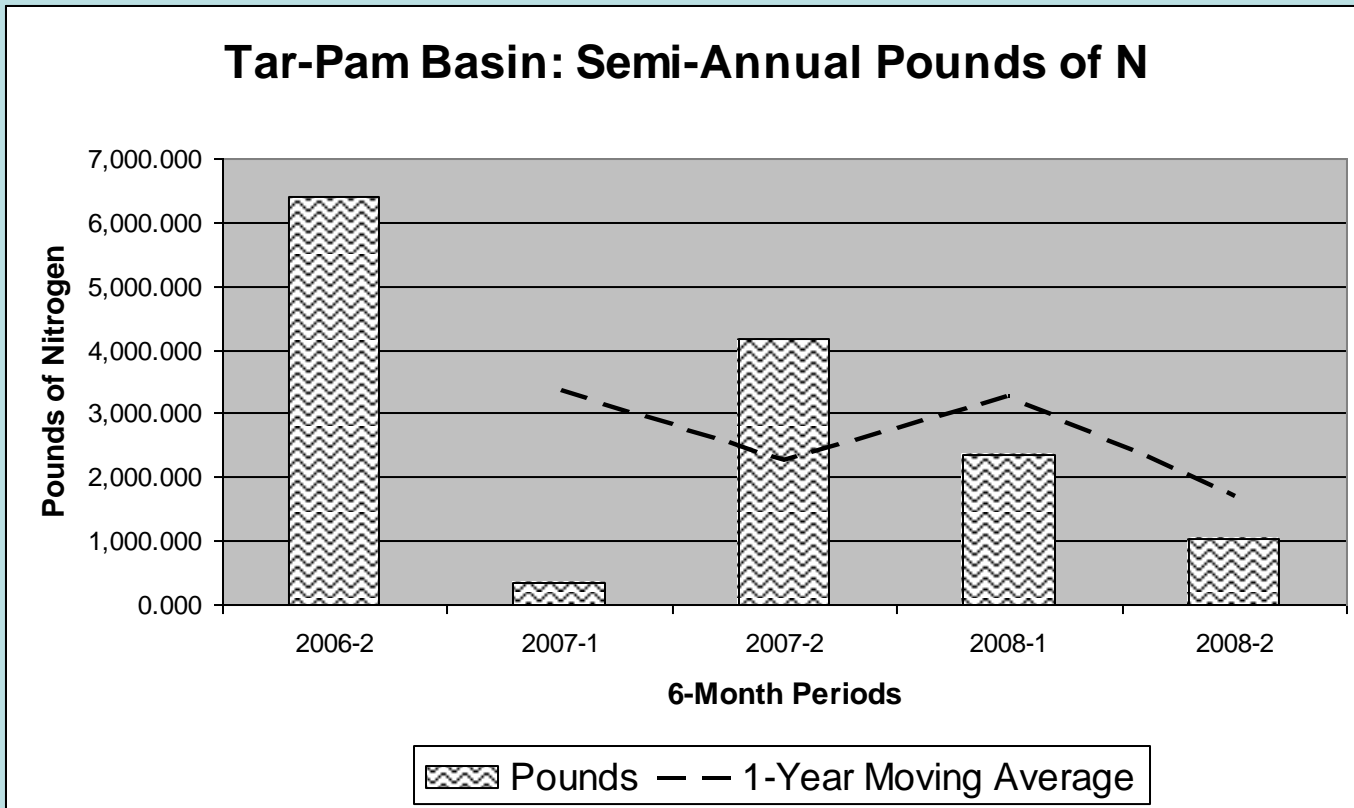
Tar-Pamlico River Basin: Nitrogen

15,053 lbs paid for to date

## Tar-Pam Basin: Semi-Annual Pounds of N



## Tar-Pam Basin: Semi-Annual Pounds of N



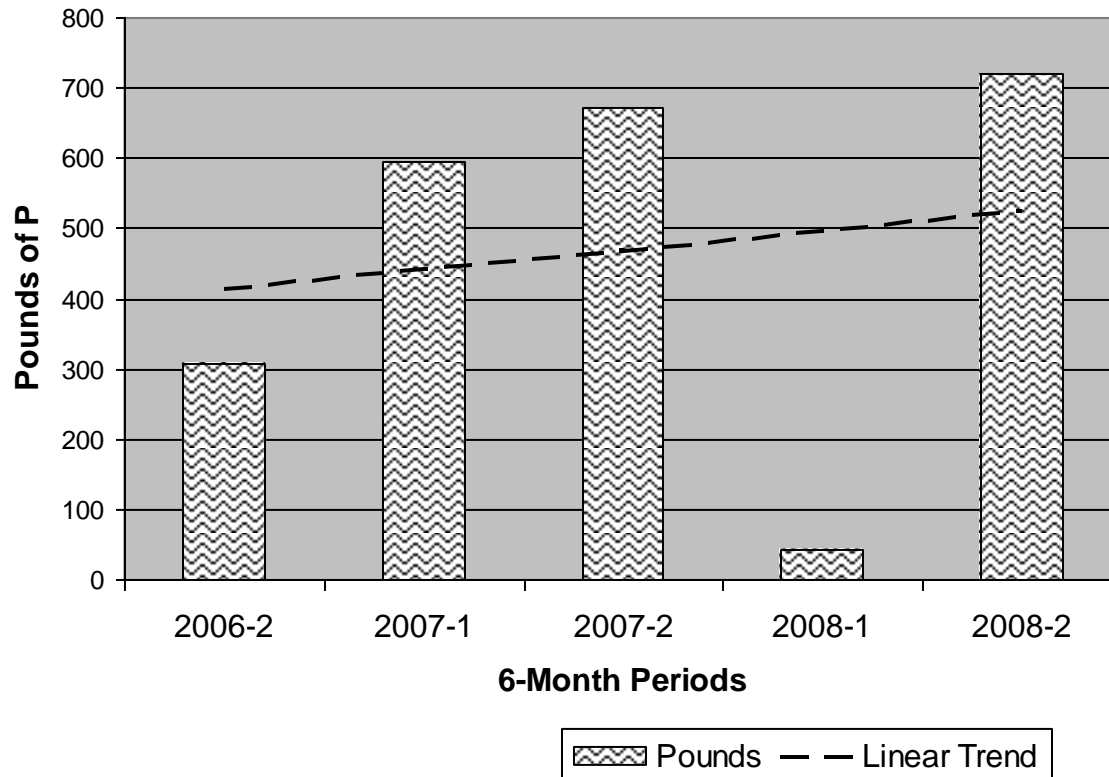
Semi-Annual Average for latest 2.5 years (2006-08) = 2,873  
= 5,746 annually

# **EEP Nutrient Offset Program Forecasts by CU and Basin**

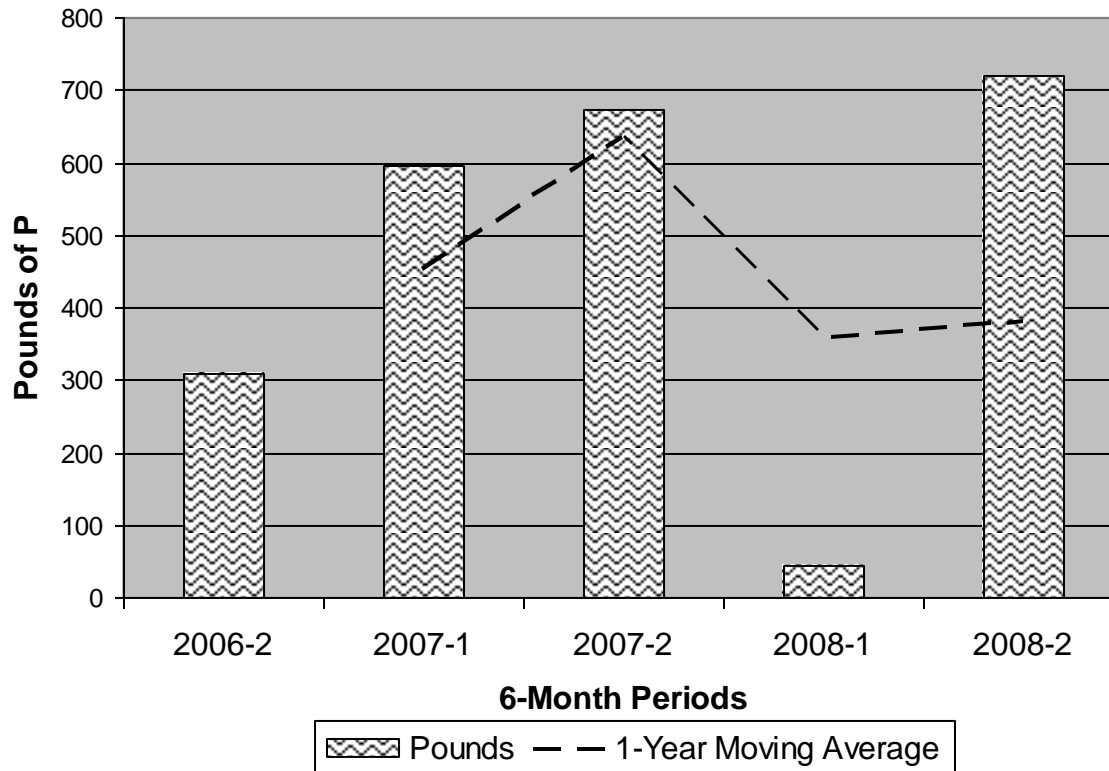
**Tar-Pamlico River Basin: Phosphorus**

2,369 lbs paid for to date

## Tar-Pam Basin: Semi-Annual Pounds of P



## Tar-Pam Basin: Semi-Annual Pounds of P



Semi-Annual Average for latest 2.5 years (2006-08) = 484  
= 968 annually

# SUMMARY OF ANNUAL FORECASTS

## NEUSE

Nitrogen.....239,938 lb. per year

## TAR-PAM

Nitrogen.....5,746 lb. per year

Phosphorus.....968 lb. per year