

Note:

The file format *.avx is associated with extensions while *.ave is associated with scripts. Most User Extensions (those created by users and not ESRI) usually consist only of an *.avx file. These user extensions are relatively easy to download and install as described below. If you are making a project transportable extensions that only required a *.avx file to install can be placed on the same disk (media) as the project. The ArcView project must be "told" to use the .avx file from the disk before the project is made transportable. This will ensure that the project opens correctly for the person trying to access the transportable project. If you are using a complicated extension (i.e. one that requires an installation of some sort) that is more than just adding the *.avx to the ext32 directory you may not be able to make the extension transportable. You may try to make it transportable but you may run into difficulties and it is not recommended unless you feel very comfortable with ArcView and computers.

Loading User Extensions

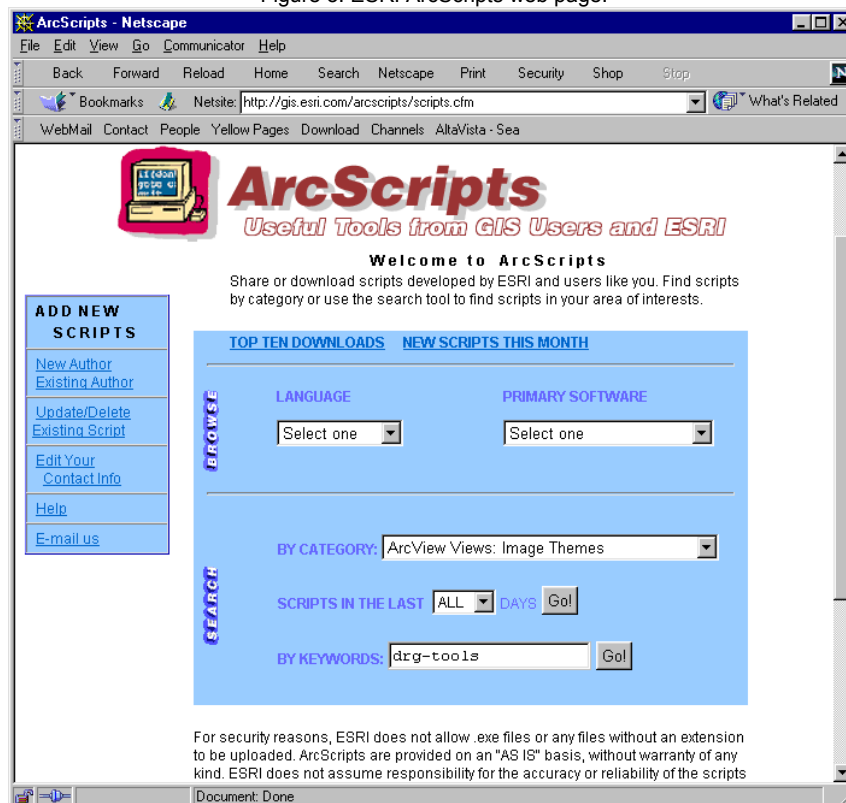
A wide variety of extensions, written by ArcView users or ESRI, have been placed on the ESRI website for free distribution at <http://gis.esri.com/arcscripsts/scripts.cfm>. These extensions, along with many scripts, can be searched by product category, keywords, etc. An example of how to acquire and load one of these user extensions -DRG-Tools- is described below.

The DRG-Tools Extension for ArcView GIS

According to the instructions included with this extension, "the DRG-Tools extension provides tools to facilitate side-by-side viewing (edge-matching) of Digital Raster Graphic (DRG) scanned quad images created by the Teale Data Center (Teale), the Tennessee Valley Authority (TVA), and the United States Geological Survey (USGS). Other utilities are also provided, including options for isolating particular image features such as contours or hydrography."

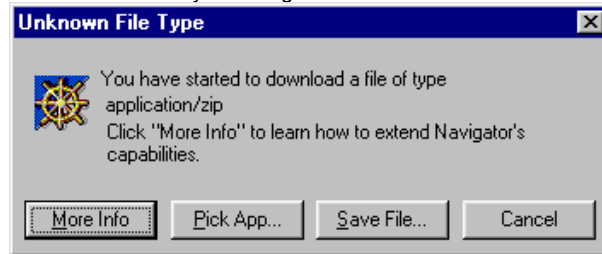
1. To download this extension, open a web browser and go to the ESRI website at <http://www.esri.com>. Click on ArcScripts (left side of web page). The ArcScripts search page is at <http://gis.esri.com/arcscripsts/scripts.cfm>. Search for the extension, either by keyword, primary software, category, etc. (See Figure 3.)

Figure 3. ESRI ArcScripts web page.



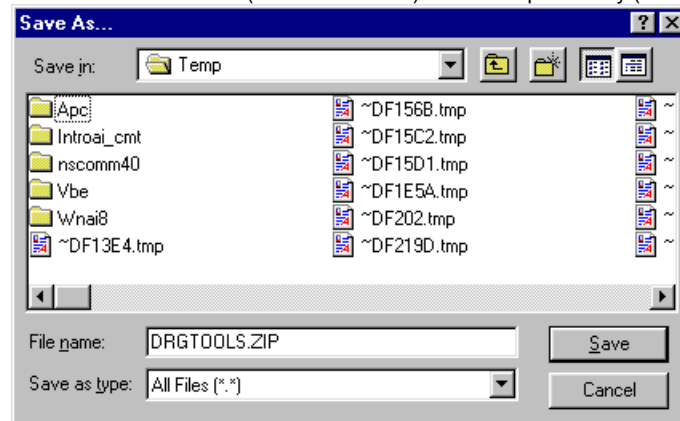
2. Scroll down the page to locate the link for “DRG-Tools”. (Notice that the item is listed as a “User Ext,” rather than a script, which often require additional steps to load.) Click on the link to go to a page of descriptive information, then click on the Download button. Read the license agreement page and click on the Accept button. This will popup another dialog box (see Figure 4); click the Save File... button.

Figure 4. Download the extension by selecting Save File... in the Unknown File Type dialog box.



3. Save the file in the system Temp directory (C:\Temp) where it can be deleted later, or to another directory of your choice.

Figure 5. Save the extension (DRGTOOLS.ZIP) to the Temp directory (C:\Temp).



4. Use the WinZip (or similar) program to extract the file archive. Execute this program by clicking on the WinZip desktop shortcut icon, or click on the Start button in the lower left corner of the desktop, then Programs, then WinZip. (WinZip may also be launched directly by double-clicking on the file archive (DRGTOOLS.ZIP) itself from within Windows Explorer.)

Figure 6. Open the archived extension in WinZip.



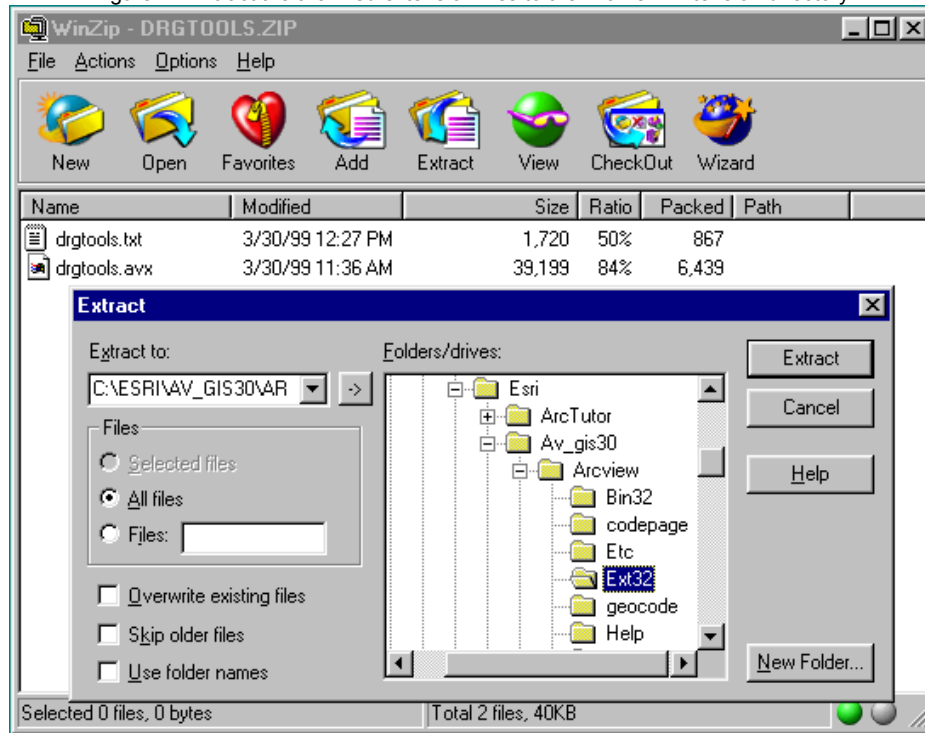
5. Click on the Open icon in the WinZip tool bar. Navigate to the system Temp directory (or where ever the extension archive was saved), and open the file archive by double-clicking on the DRGTOOLS.ZIP text. (See Figure 6 at right.)
6. A list of files will appear in the WinZip window. Click on the Extract button in the WinZip tool bar to write the extension files to their proper directory on disk. Navigate to

the ArcView installation directory, usually “C:\Esri,” and then to the extension directory:

“C:\Esri\Av_gis30\Arcview\Ext32”.

Click on the Extract button in the Extract dialog box. This will write the extension to the above directory. (See Figure 7.)

Figure 7. Extract the archived extension files to the ArcView Extension directory.



7. Finally, follow the instructions, provided by the extension’s author, Will Patterson, in the file, “**drgtools.txt**” to complete the loading procedure. This text file can be viewed in your choice of text editors, including NotePad, WordPad, and Word. Notice that the final instructions for loading this extension correspond to those for loading any extension that comes bundled with ArcView, detailed at the beginning of this document. A DRG-Tools drop-down menu will be added to ArcView’s menu bar when the extension is loaded. (See Figure 8.)

Figure 8. The DRG-Tools extension drop-down menu added to the ArcView menu bar.

