

# Contact Tracing Program

## Keeping the Pack protected during Covid-19

We are encouraging all NC State Students to self-report either positive COVID-19 testing results or a diagnosis of COVID-19 by your healthcare provider even in the absence of testing. Collecting this information to help us understand and track the impact of COVID-19 on our campus and to follow up on any information that might affect the safety of faculty, staff, and students of NC State.

## What is Contact Tracing?

Contact Tracing is a system to slow the spread of infectious diseases like COVID-19. One method is for someone who has been infected to list all the people with whom they have been in prolonged contact. Those people will then be contacted, and potentially be asked to quarantine.

## Who does this apply to?

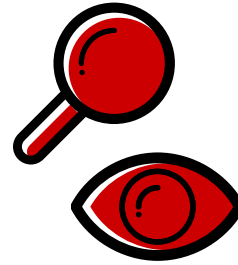
NC State Occupational Medicine (Occ Med) will use the Student Self-Reporting system ([go.ncsu.edu/covid-student-self-report](https://go.ncsu.edu/covid-student-self-report)) to find out about possible contacts on campus, and reach out to the contacts to detect possible Covid-19 infection. In most cases contact students will be asked to quarantine. The program is voluntary, and confidential. We use our electronic health records system, and a link is sent out daily via email to obtain the up to date health status of the contact students. Help and testing, if needed, is available through Occupational Medicine.

# How it works

## Diagnose

A person tests positive for Coronavirus (COVID-19) or displays symptoms and fills out the Self Report form: [go.ncsu.edu/covid-student-self-report](http://go.ncsu.edu/covid-student-self-report)

STEP  
01



STEP  
02

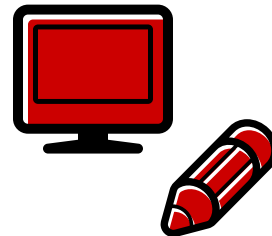
## Identify

Occupational Medicine speaks with the patient to identify anyone who has had close contact with them while they were on campus

## Contact

Those contacts will get an initial phone call from Occ Med explaining that they have been exposed, and permission will be asked to contact them every day

STEP  
03



STEP  
04

## Track

An online form on their Healthy Pack portal will be filled out daily tracking symptoms of COVID-19



## Monitor

Every day Occ Med will connect with patients and monitor symptoms until they can be given the all-clear

STEP  
05

## Contact us

919-515-2563  
[Occupational-medicine@ncsu.edu](mailto:Occupational-medicine@ncsu.edu)