



IUCRC PROGRAM FINDINGS FROM THE CENTER STRUCTURE DATABASE

- FINAL RESULTS: FY 2007-2008
- TRENDS FROM CENTER STRUCTURE DATABASE: 1980-2008

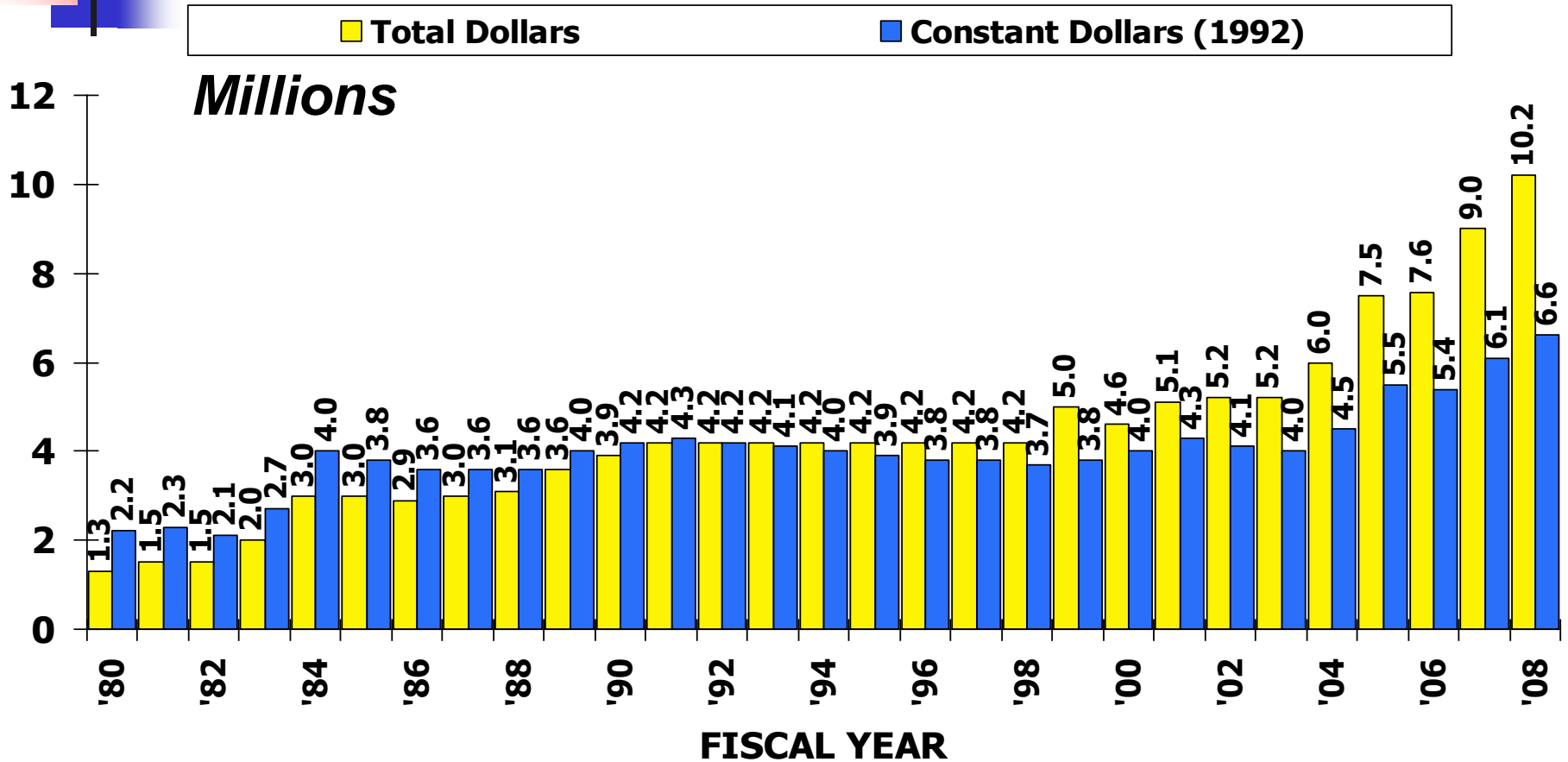
*Gray, D.O. & McGowen, L.
North Carolina State University*



FY 2007-2008 STRUCTURAL INFORMATION

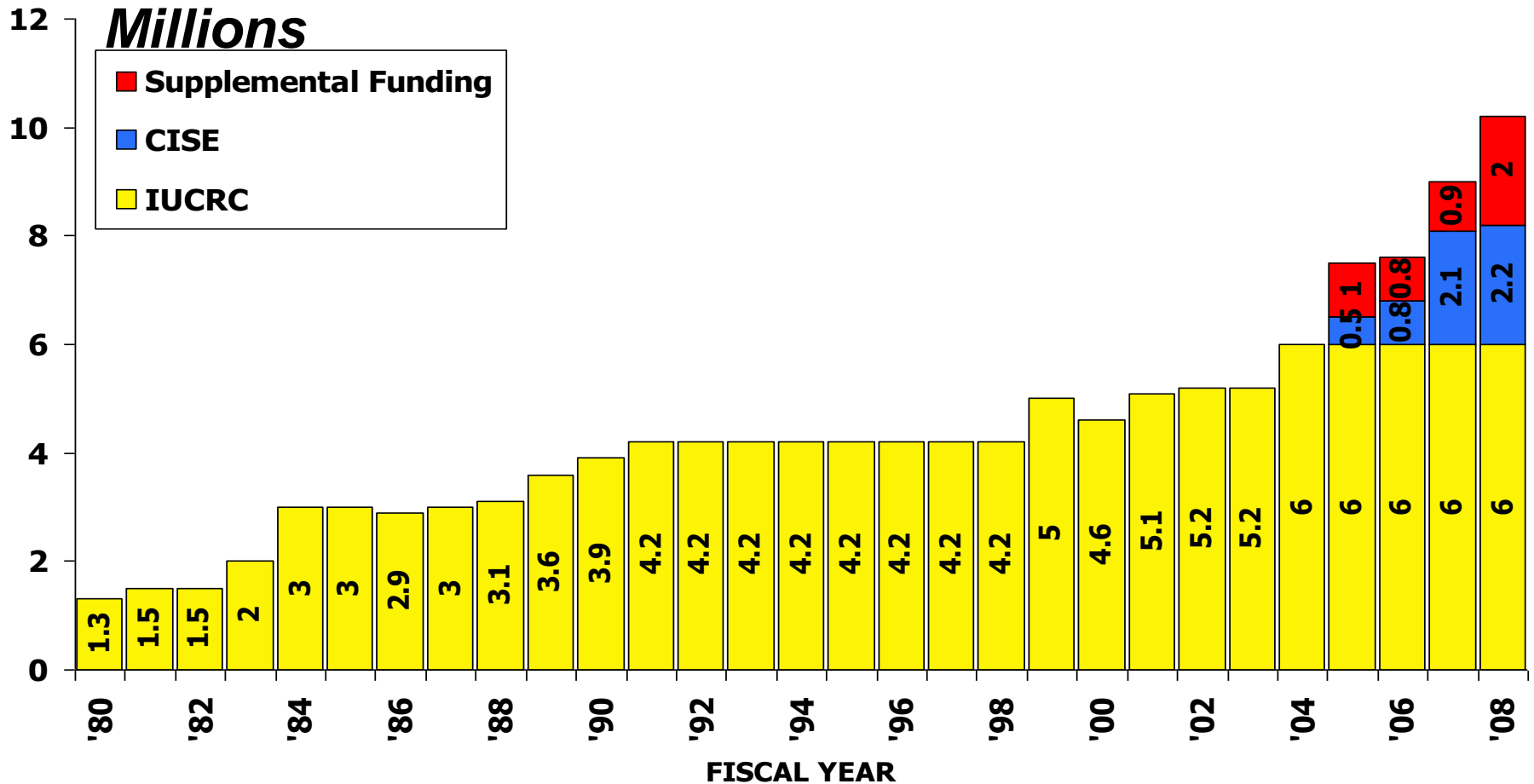
- **PRESENTATION**
 - BASED ON DRAFT VERSION
- **FINAL VERSION**
 - FINAL TABLES WILL BE E-MAILED
 - MEMBERSHIP REPORT
- **RESPONSE RATE**
 - 34 CENTERS IN OPERATION DURING FY 2007-2008
 - 34 OUT OF 34 CENTERS RESPONDED

NSF BUDGET BY YEAR

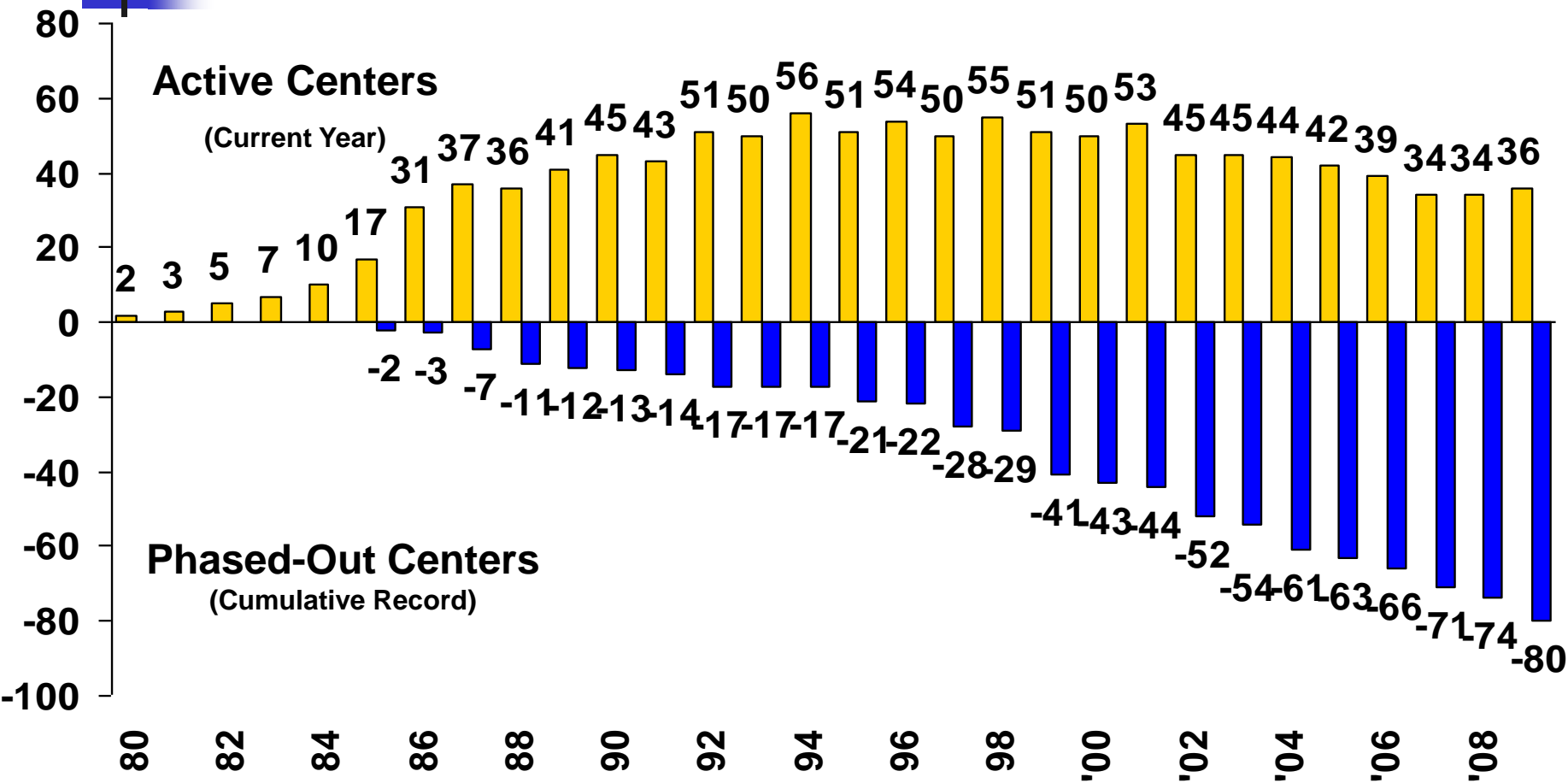


Note 1: 1992 dollars calculated at: <http://www.minneapolisfed.org/> Note 2: 2005 - 2008: Include Supplemental Funding and CISE

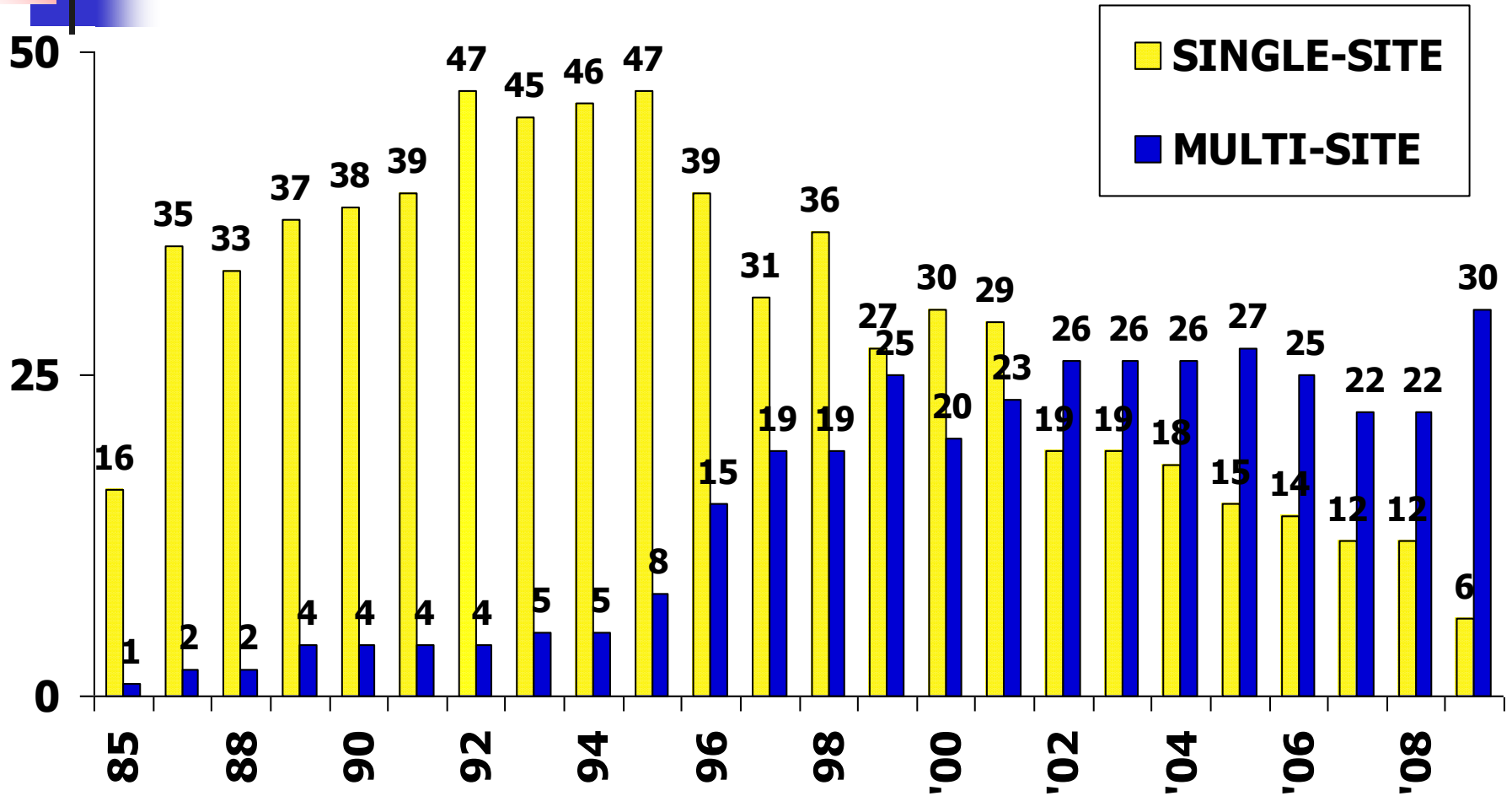
NSF BUDGET BY YEAR



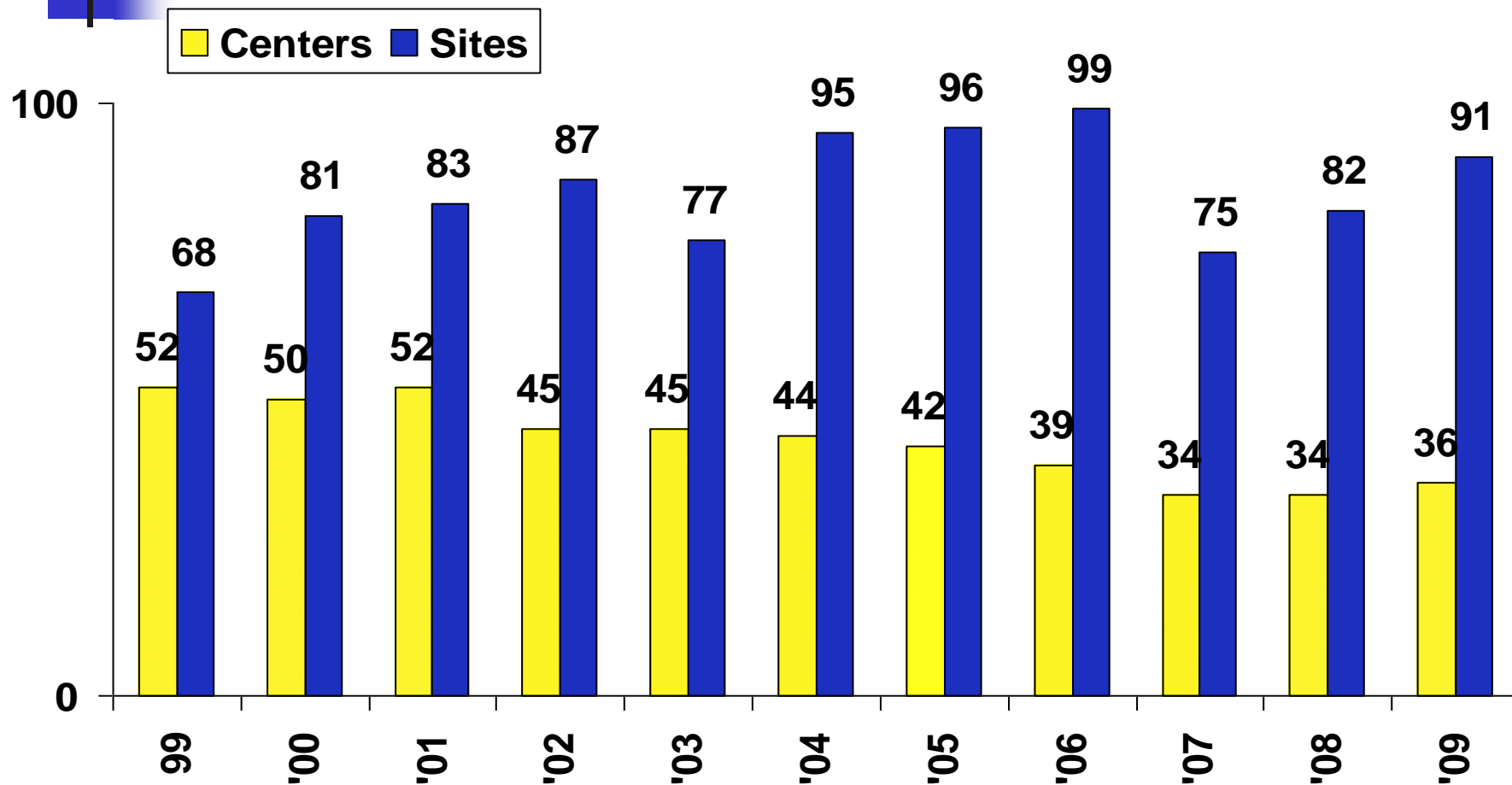
CENTER LIFE CYCLE



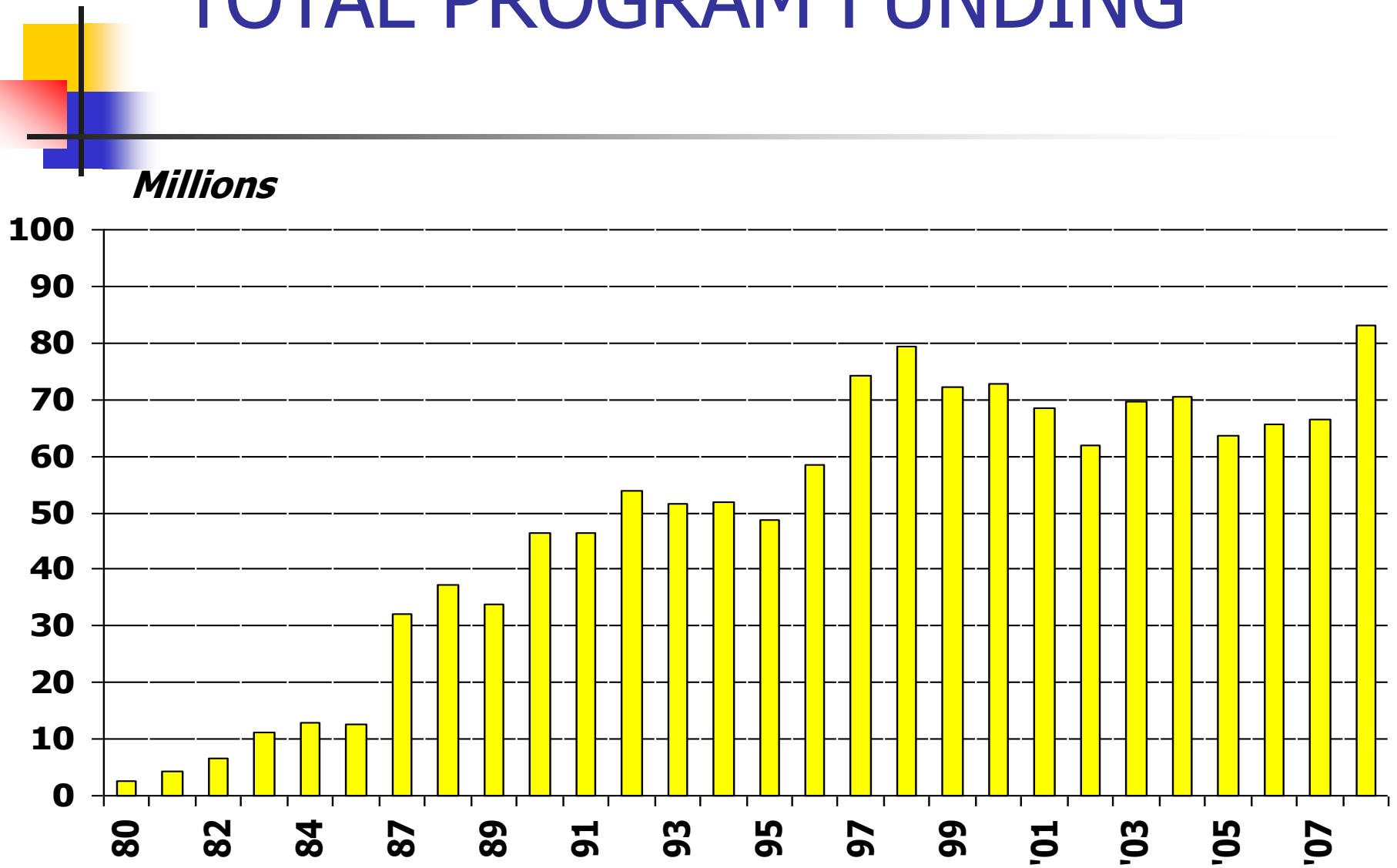
SINGLE AND MULTI-SITE CENTERS BY YEAR



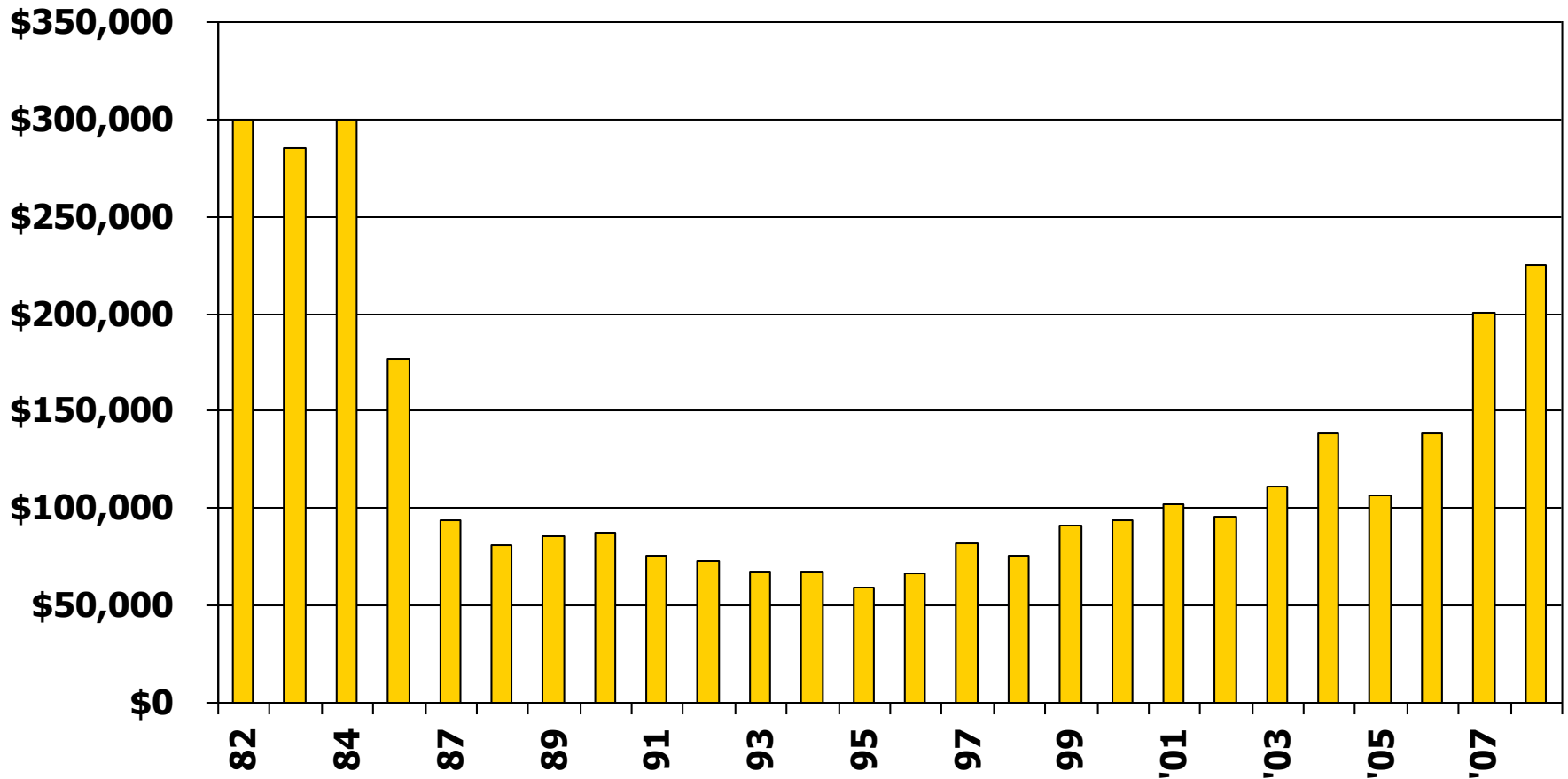
ACTIVE CENTERS AND SITES BY YEAR



TOTAL PROGRAM FUNDING

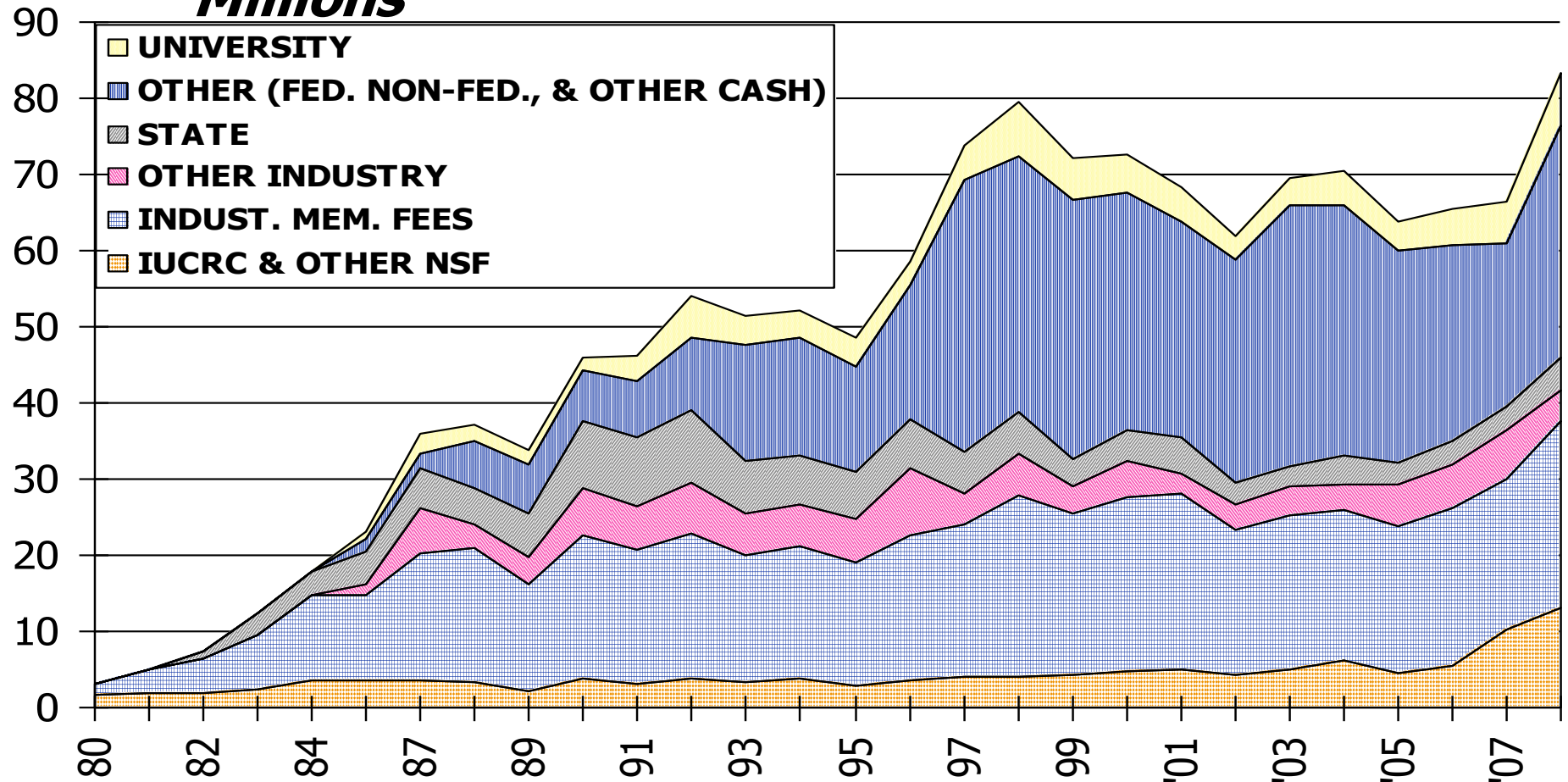


AVERAGE NSF IUCRC FUNDING PER CENTER

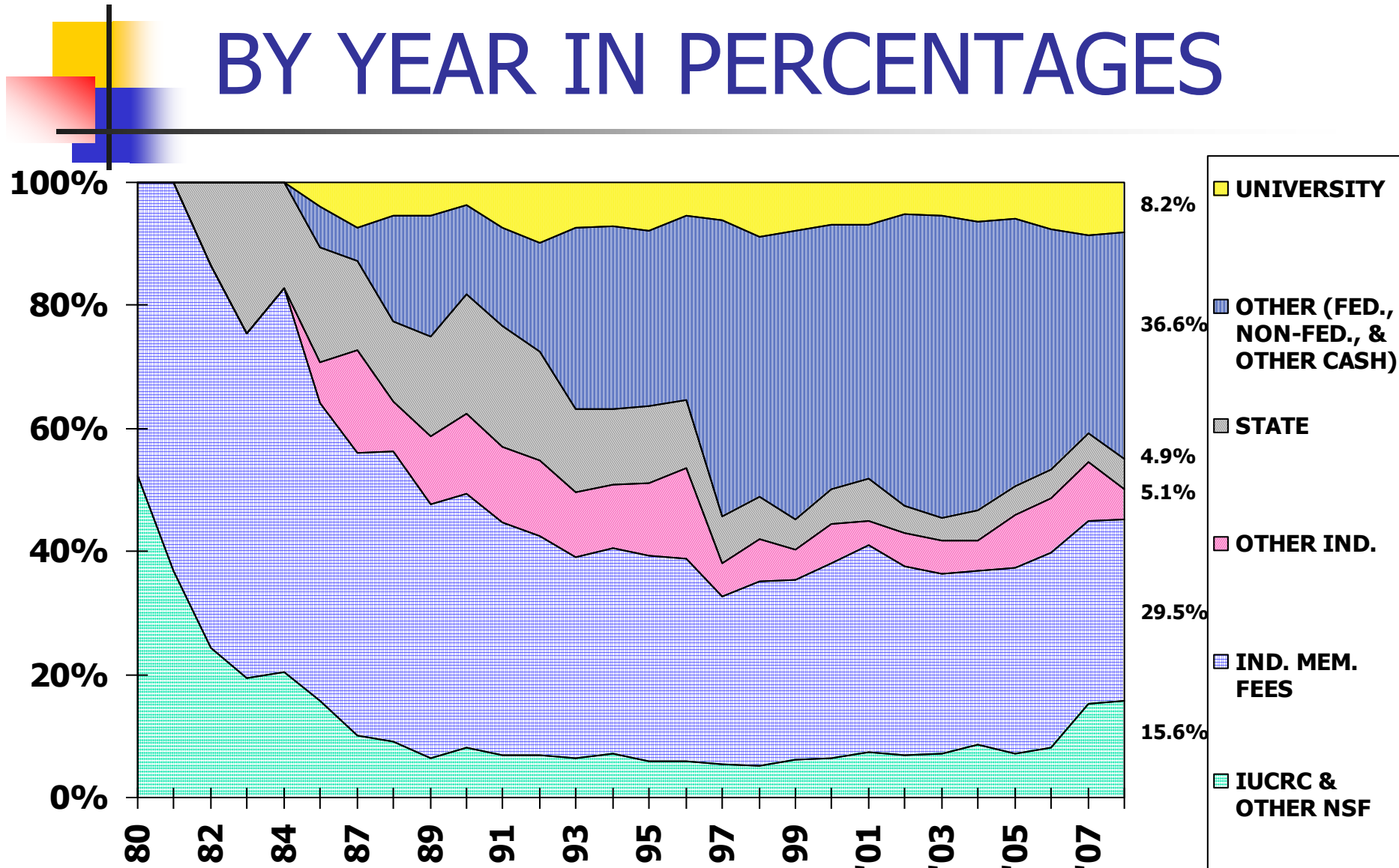


TOTAL FUNDING BY SOURCE BY YEAR IN DOLLARS

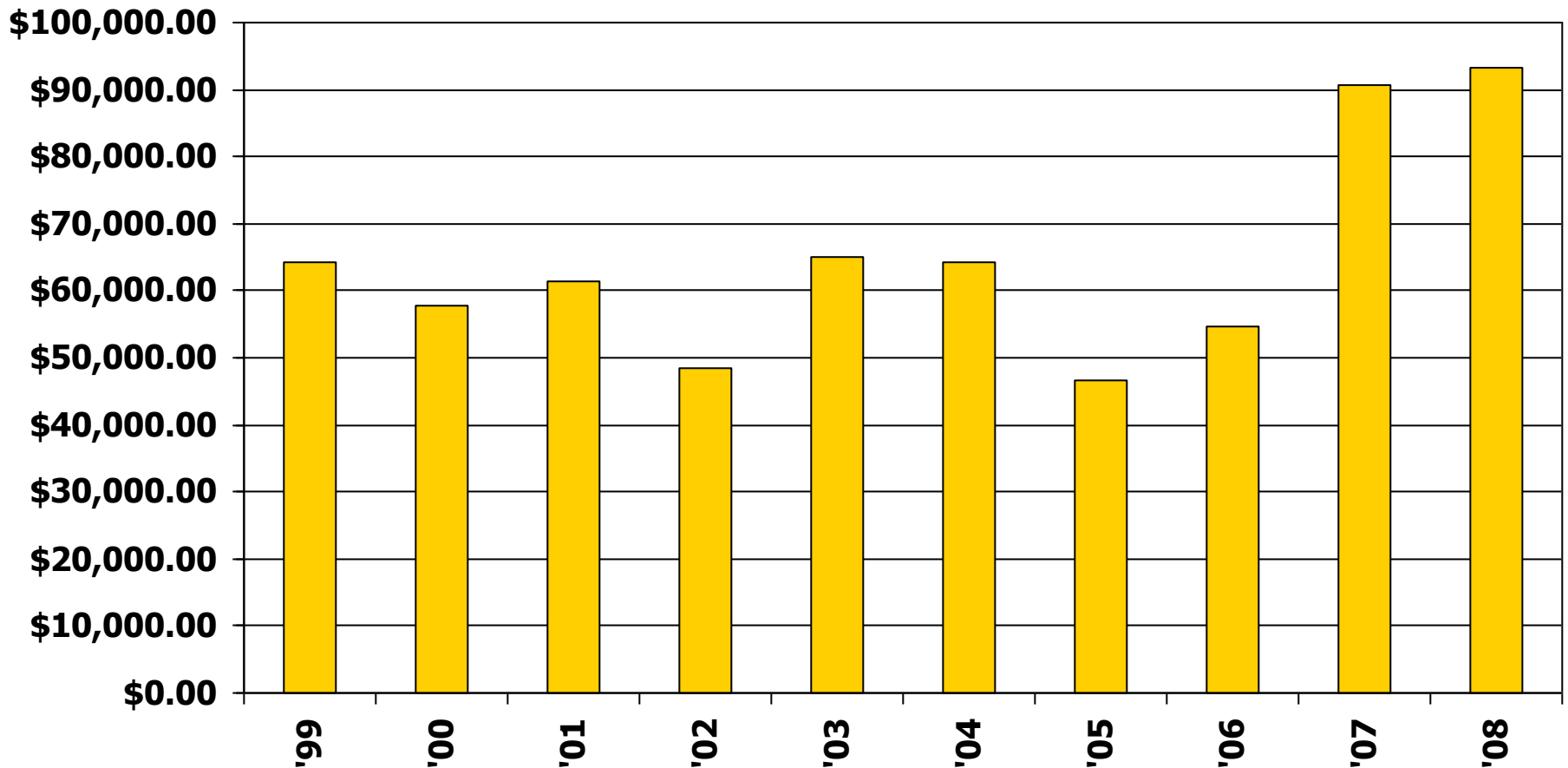
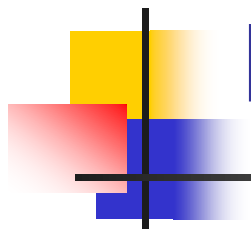
Millions



TOTAL FUNDING BY SOURCE BY YEAR IN PERCENTAGES

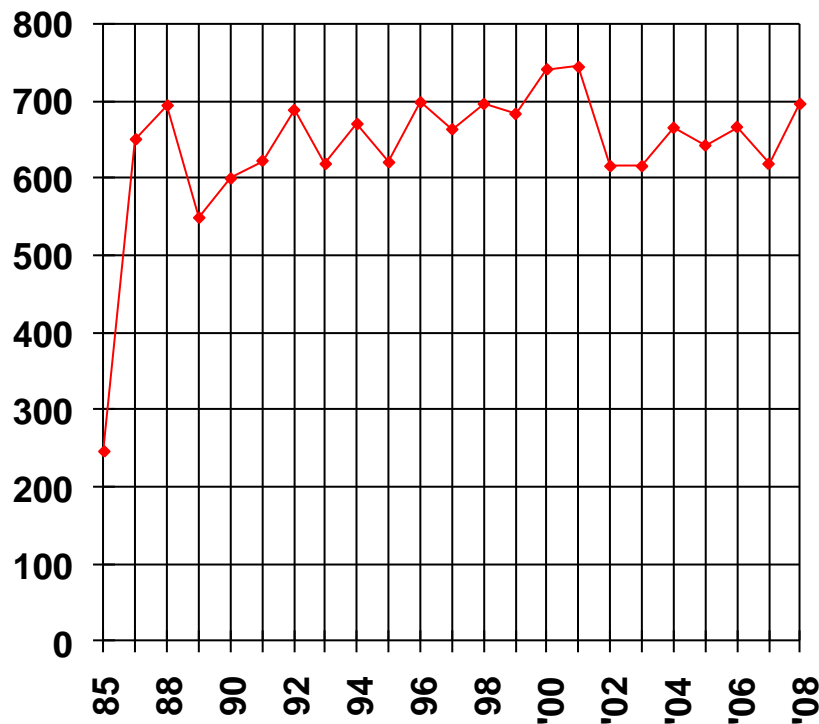


AVERAGE NSF IUCRC FUNDING PER SITE

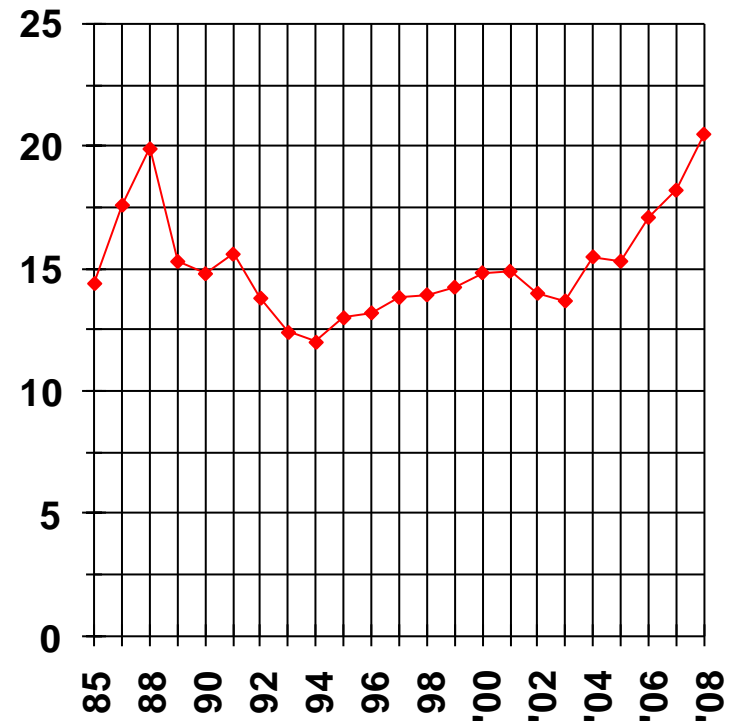


INDUSTRIAL MEMBERSHIPS BY YEAR

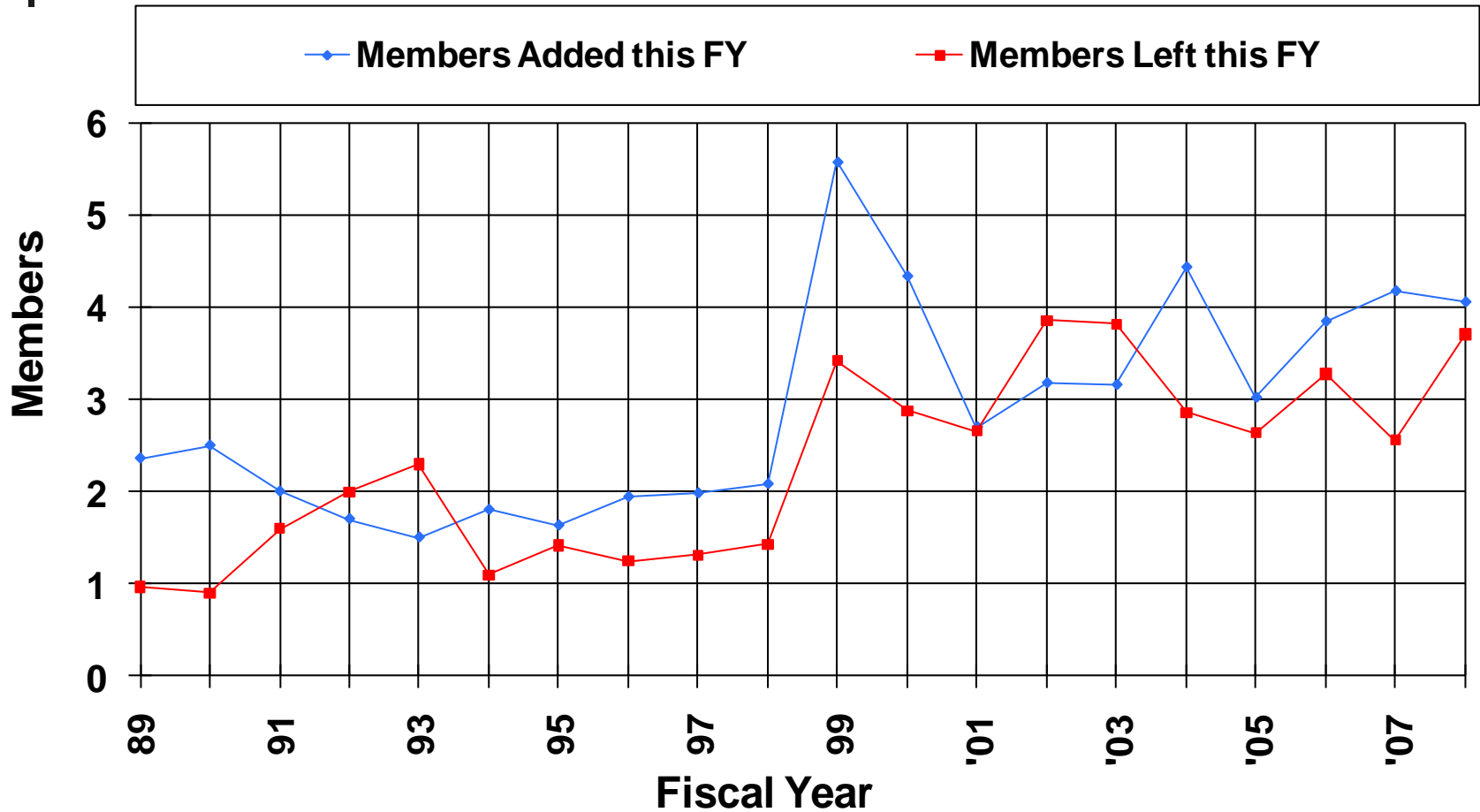
TOTAL NUMBER OF MEMBERS



AVERAGE NUMBER OF MEMBERS PER CENTER

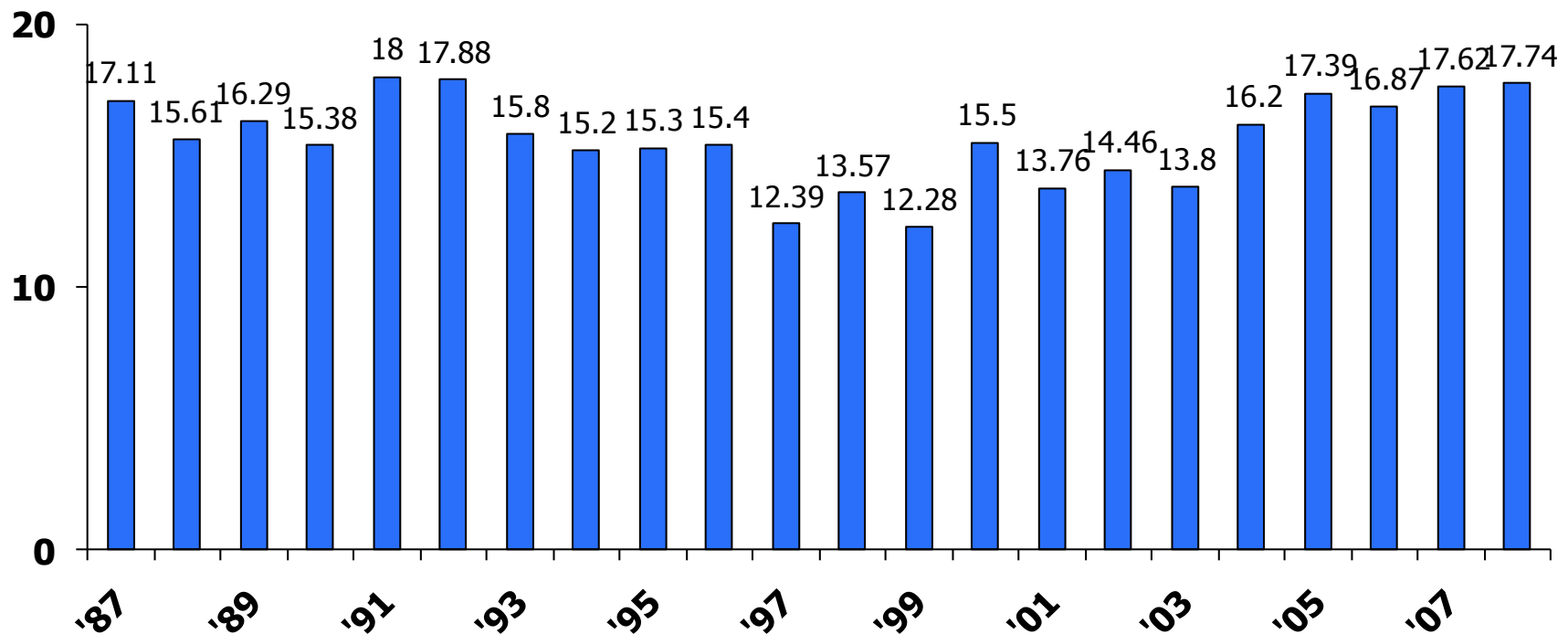


AVERAGE MEMBERSHIP TURN OVER



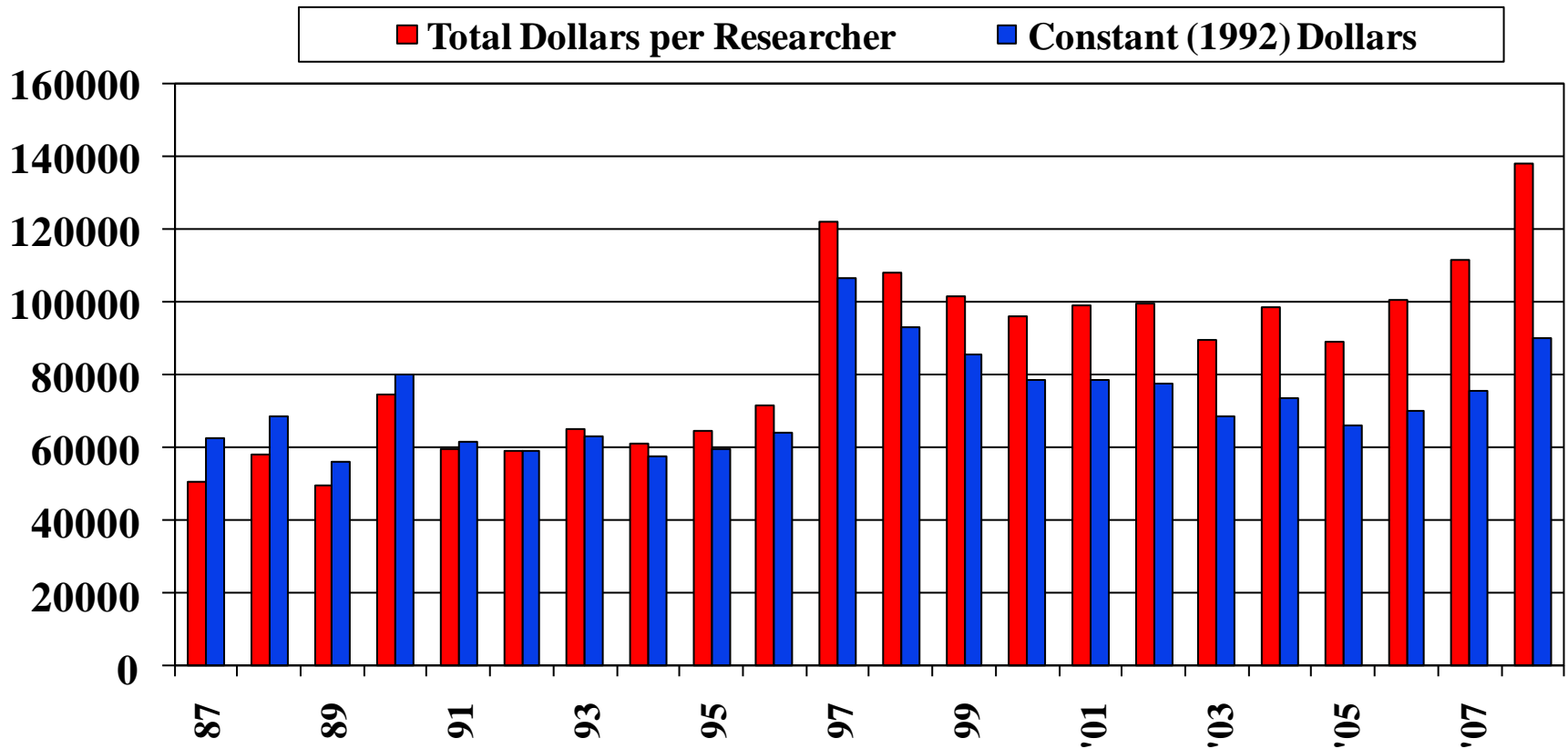
AVERAGE NUMBER OF RESEARCHERS PER CENTER / BY YEAR

FACULTY & POST DOC RESEARCHERS



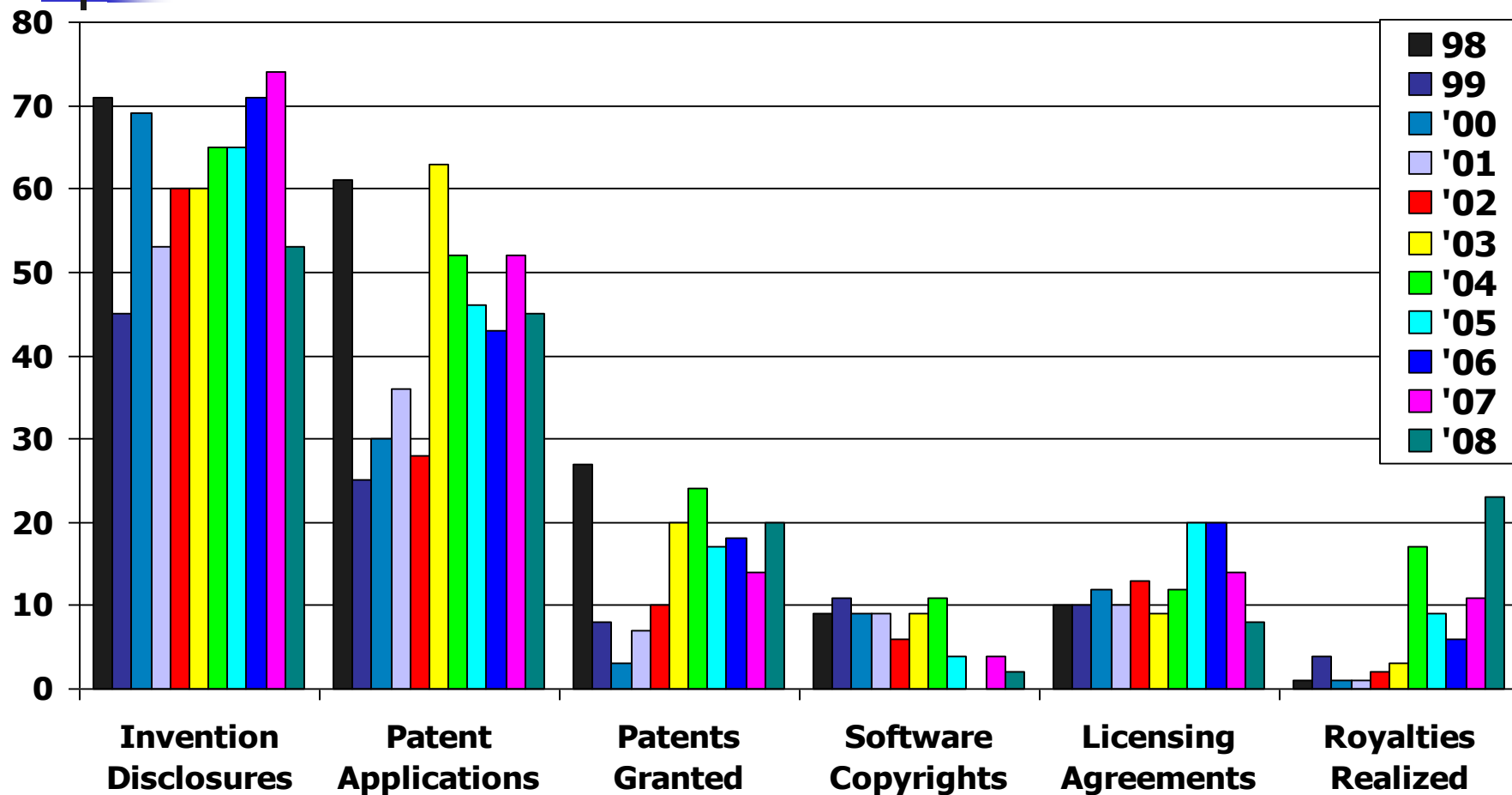
Note: As of 2003, NSF changed the label of “non-faculty” researchers to “post doc” researchers

FUNDING PER RESEARCHER TOTAL vs. CONSTANT DOLLARS



Note: 1992 dollars calculated at: <http://woodrow.mpls.frb.fed.us/research/data/us/calc/>

INTELLECTUAL PROPERTY EVENTS FY 98-08 TOTALS



AVERAGE NUMBER OF INTELLECTUAL PROPERTY EVENTS

